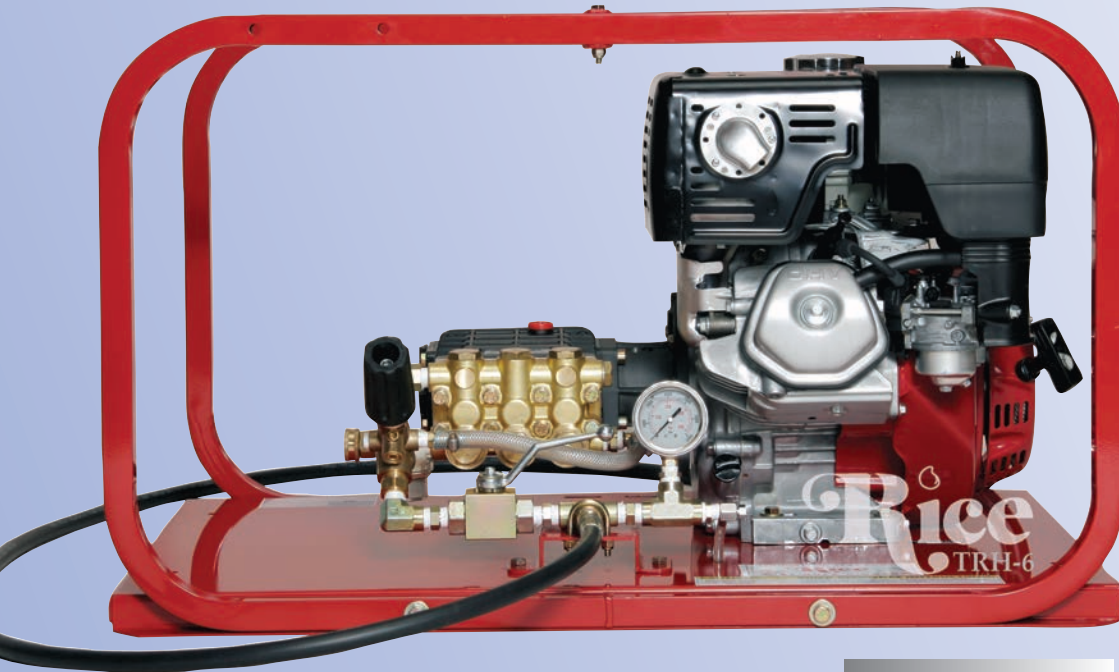


HYDROSTATIC TEST PUMPS

Model TR-Series • Up to 5.5 GPM • 5000 PSI



The TR-Series are large volume, high pressure hydrostatic pumps. Designed for testing boilers, vessels, process piping, steam and gas lines. The ceramic plunger pump, has an inner oil bath, ensuring long life and increased stability. Their high flow characteristics for pumps in this pressure range will speed testing as it quickly removes air from the test environment. There are no external moving parts for operator safety and reduced liability risks. Virtually indestructible, the TR-Series is enclosed in a rugged roll cage of welded heavy gauge steel. These units are available with gas, diesel or electric power sources. Special order options available, pumps can be built to suit.

- **Automatic Pressure Regulator with Inlet Bypass**
- **Stainless Steel Liquid-Filled Gauge Ensure Accurate Readings, with Less Flutter**
- **Enclosed in a Rugged Roll Cage & Heavy Gauge Steel Base**
- **Stainless Steel Ballvalve to Isolate Pressure**



3500 Arrowhead Drive
Carson City
Nevada
89706

web site:
www.ricehydro.com

e-mail:
sales@ricehydro.com

Phone:
(775) 885-1280

Fax:
(800) 998-7423

T R S E R I E S						
Pump	TRH-2	TRE-6	TRH-8	TRE-8	TRH-10	TRD-8E
PSI	2000	2700	3600	3600	5000	3500
GPM	3	4	4	4	4.5	4
Inlet	3/4"	3/4"	3/4"	3/4"	3/4"	3/4"
Outlet	3/8"	3/8"	3/8"	3/8"	3/8"	3/8"
Motor/Engine	Honda 6.5 HP 163 CC	Baldor 7 1/2 HP 60 HZ	Honda 13 HP 389 CC	Baldor 10 HP 60 HZ	Honda 20 HP 614 CC	Diesel 7.3 KW 462 CC
Shipping Dimensions	25X21X17	35X25X19	35X25X19	35X25X19	35X25X21	35X25X21
Shipping Weight	120 LBS	255 LBS	177 LBS.	286 LBS	250 LBS	250 LBS
Options:	Engines: Briggs & Stratton, Honda or Diesel					
Motors:	Explosion proof, Variation in Hertz, Voltage and Phase					

RICE HYDRO, INC. - MANUFACTURER'S OPERATING INSTRUCTIONS
TR-SERIES MODEL TEST PUMPS
FOR WARRANTY REGISTRATION CALL: 1-800-245-4777

REMEMBER THESE CAUTIONS:

1. **Electric Models** - Power source must meet voltage, phase, hertz and amperage requirements of electric motor, as stated on label. If an extension cord is used, requires at least 12 gauge 3 wire with maximum of 25 foot length.
2. Check all fluid levels prior to operating pump.
3. Use a sound 3/4" or larger supply hose.
4. DO NOT run dry or pump chlorine through the unit.
5. Protect the pump from freezing, FLUSH with anti-freeze.

CONNECTING THE PUMP:


1. Check oil level of engine as well as the oil level of pump thru sight glass, use 10W30 non-detergent as needed. **Electric Models** - With motor switch in the off position, connect power cord of motor to a standard wall outlet. Extension cord: when needed, requires a 12 gauge 3 wire, maximum 25 foot length plugged into a 20 or larger amp breaker, depending on individual motor requirements.
2. Connect **CLEAN** pressurized water source (minimum 3/4") to the inlet of the pump. It is recommended that the unit be pressure fed. For gravity feed locate water within 8 feet and above level of unit, and then prime the pump.
3. Connect high pressure outlet hose to the pump and your test environment.

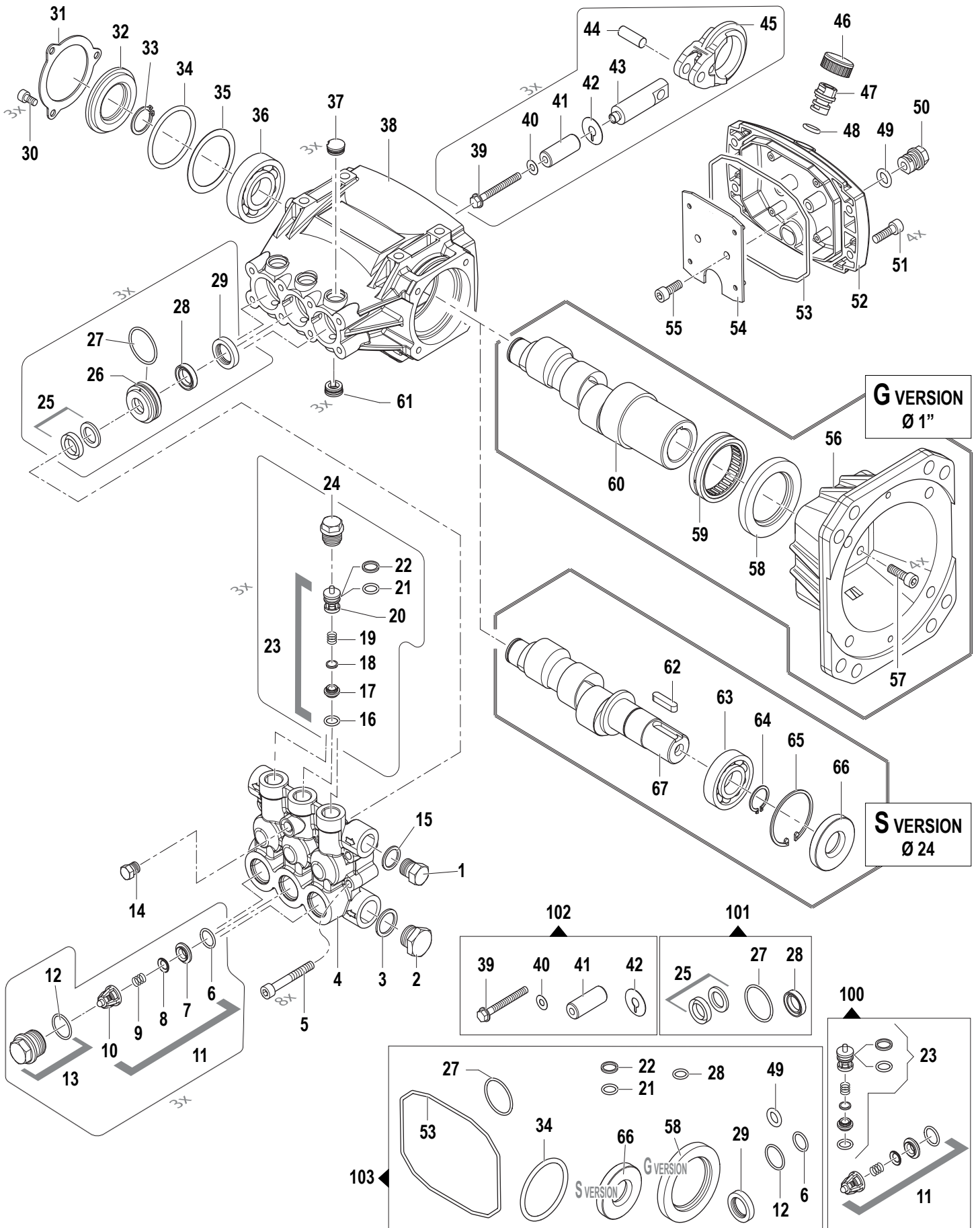
OPERATING THE PUMP:

1. Turn the outlet ballvalve to the open position, begin water flow and start the engine. The engine RPM is preset at the factory, **DO NOT ADJUST!**
2. The pressure regulator has been preset at the factory. **To change this setting you must make this adjustment while the water is flowing freely, and under NO pressure.** To adjust the pressure, first loosen the locknut. Turn the T-handle/Knob clockwise to increase and counter-clockwise to decrease the pressure. Place a ballvalve or similar open and close valve at the end of the outlet hose, open and close this valve multiple times as needed, to check pressure setting and re-adjust as necessary. It is also recommended that you open and close the hosebib located under the gauge to bleed excess air from piping and ensure accurate pressure gauge readings. Upon reaching desired pressure setting, tighten locknut and prepare to begin test.
3. With the ballvalve open begin building pressure in the test environment. Be sure to bleed the air from hosebib under gauge at least once during this process. Once test pressure has been reached, **close the ballvalve and shut-off engine.**
4. Once the outlet ballvalve is closed and your test begins, you have now isolated the test pump from the test environment, any loss of pressure is due to leaks or trapped air being compressed in the test environment.

RECOMMENDED PERIODIC MAINTENANCE PROCEDURE

1. Plunger pump - Change oil in the pump body after first 50 hours of use, and every 250 hours thereafter. Change oil in the engine after first 5 hours of use, and every 80 hours thereafter.

 **WARNING:** Operating, servicing and maintaining this equipment can expose you to chemicals including engine exhaust, carbon monoxide and lead, which are known to the State of California to cause cancer and birth defects or other reproductive harm. To minimize exposure, avoid breathing exhaust, do not idle the engine except as necessary, operate and service your equipment in a well-ventilated area and wear gloves or wash your hands frequently when servicing your equipment. For more information go to: www.p65warnings.ca.gov



PARTS BREAKDOWN FOR MODEL TRH8

RICE HYDRO, INC.

** Serial numbers #57983 and after

REF#..	PART NUMBER..	DESCRIPTION..	QTY REQ'D
1	EWD-3200-0007	CAP	1
2	EWD-3202-0015	CAP	1
3	EWD-2811-0086	WASHER	1
4	EWD-3218-0546	PUMP MANIFOLD	1
5	EWD-3609-0090	SCREW	8
11	EWD-1220-0194	SUCTION VALVE ASSY KIT	3
12	EWD-1210-0669	O-RING	3
13	EWD-3202-0441	SUCTION CAP KIT	3
14	EWD-3202-0018	CAP	1
15	EWD-2811-0084	WASHER	1
23	EWD-1220-0215	DELIVERY VALVE ASSY KIT	3
24	EWD-3202-0279	DELIVERY CAP	3
25	EWD-1241-0218	PACKING	3
26	EWD-0009-0729	PACKING RETAINER	3
27	EWD-1210-0223	O-RING	3
28	EWD-1241-0225	PACKING	1
29	EWD-0019-0095	OIL SEAL	1
30	EWD-3609-0088	SCREW	1
31	EWD-1004-0012	CRANKCASE FLANGE	1
32	EWD-0402-0360	TRANSPARENT COVER	1
33	EWD-3019-0011	OUTER SEEGER	1
34	EWD-1210-0386	O-RING	1
35	EWD-0009-0275	SPACER	1
36	EWD-0438-0137	BALL BEARING	1
37	EWD-3202-0435	CAP	3
38	EWD-0403-0406	PUMP CRANKCASE	1
39	EWD-3605-0152	SPECIAL SCREW	3
40	EWD-2811-0235	WASHER	3
41	EWD-0202-0137	CERAMIC BUSHING	3
42	EWD-2812-0129	WASHER	3
43	EWD-2409-0291	PISTON GUIDE	3
44	EWD-3011-0014	GUDGEON PIN	3
45	EWD-0205-0103	CONNECTING ROD	3
46	EWD-0402-0537	PLUG COVER	1
47	EWD-3202-0434	BREATHER PLUG	1
48	EWD-1210-0056	O-RING	1
49	EWD-1210-0557	O-RING	1
50	EWD-3202-0220	PLUG	1
51	EWD-3625-0062	SCREW	4
52	EWD-0402-0530	CRANKCASE COVER	1
53	EWD-1210-0769	O-RING	1
54	EWD-2404-0218	PLATE	1
55	EWD-3625-0051	SCREW	1
56	EWD-3016-1037	FLANGE	1
57	EWD-3609-0032	SCREW	4
58	EWD-0019-0102	OIL SEAL	1
59	EWD-0437-0091	ROLLER BEARING	1
60	EWD-0001-0990	ECCENTRIC SHAFT	1
61	EWD-3202-0440	DRILLED CAP	3
	KITS:		
100	EWD-5025-0075	COMPLETE VALVE KIT	1
101	EWD-5019-0708	WATER SEAL KIT	1
102	EWD-2409-0260	PISTON KIT	1
103	EWD-5019-0285	OIL SEAL KIT	1

PARTS BREAKDOWN FOR MODEL TRH8

RICE HYDRO, INC.

** Serial numbers #57983 and after

REF#..	PART NUMBER..	DESCRIPTION..	QTY REQ'D
	MISC PARTS..		
	LINESTRAINER-1/2	INLET LINE STRAINER	1
	HONDA-GX390UT2-QA2	13 HP GAS ENGINE TR8	1
	PUMP-4.0/40	TRIPLEX PLUNGER PUMP	1
	UNLOADER-500/4000PSI	PRESSURE REGULATOR	1
	NEEDLEVALVE-1/4	BLEED VALVE	1
	BALLVALVE-7250-3/8	OUTLET BALLVALVE	1
	GAUGE-4000	LIQUID FILLED GAUGE	1
	HOSE-3/8-5000X8-RH	8' FOOT OUTLET HOSE	1
	<i>*3/8" Male Rigid Fitting & 3/8" Male Swivel Fitting included on 8ft outlet hose</i>		
	COUPLERBODY-S-3/8	FEMALE PUMP OUTLET - HOSE	1
	COUPLERPLUG-S-3/8	MALE PUMP OUTLET - PIPING	1
	HOSE-HYD-3/8-HP	CUSTOMER SPECIFY LENGTH OF HOSE	
	3/8" Male Rigid Fitting & 3/8" Male Swivel Fitting		1