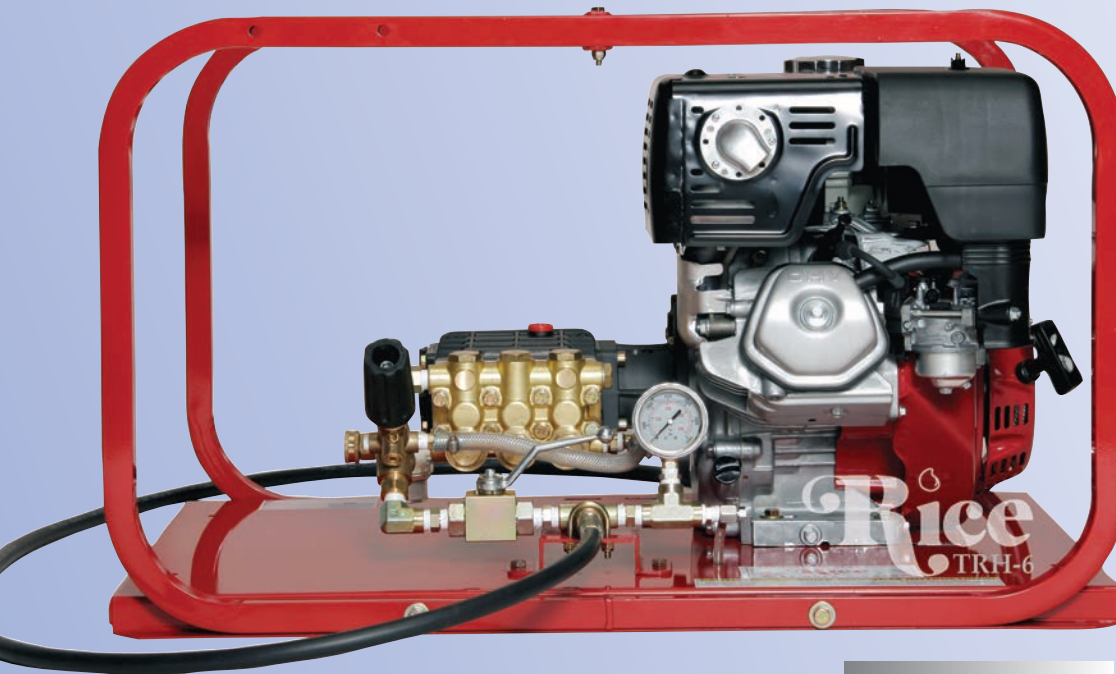


HYDROSTATIC TEST PUMPS**Model TR-Series • Up to 5.5 GPM • 5000 PSI**

The TR-Series are large volume, high pressure hydrostatic pumps.

Designed for testing boilers, vessels, process piping, steam and gas lines. The ceramic plunger pump, has an inner oil bath, ensuring long life and increased stability. Their high flow characteristics for pumps in this pressure range will speed testing as it quickly removes air from the test environment.

There are no external moving parts for operator safety and reduced liability risks. Virtually indestructible, the TR-Series is enclosed in a rugged roll cage of welded heavy gauge steel. These units are available with gas, diesel or electric power sources. Special order options available, pumps can be built to suit.

- **Automatic Pressure Regulator with Inlet Bypass**
- **Stainless Steel Liquid-Filled Gauge Ensure Accurate Readings, with Less Flutter**
- **Enclosed in a Rugged Roll Cage & Heavy Gauge Steel Base**
- **Stainless Steel Ballvalve to Isolate Pressure**



3500 Arrowhead Drive
Carson City
Nevada
89706

web site:
www.ricehydro.com

e-mail:
sales@ricehydro.com

Phone:
(775) 885-1280

Fax:
(800) 998-7423

T R S E R I E S						
Pump	TRH-2	TRE-6	TRH-8	TRE-8	TRH-10	TRD-8E
PSI	2000	2700	3600	3600	5000	3500
GPM	3	4	4	4	4.5	4
Inlet	3/4"	3/4"	3/4"	3/4"	3/4"	3/4"
Outlet	3/8"	3/8"	3/8"	3/8"	3/8"	3/8"
Motor/Engine	Honda 6.5 HP 163 CC	Baldor 7 1/2 HP 60 HZ	Honda 13 HP 389 CC	Baldor 10 HP 60 HZ	Honda 20 HP 614 CC	Diesel 7.3 KW 462 CC
Shipping Dimensions	25X21X17	35X25X19	35X25X19	35X25X19	35X25X21	35X25X21
Shipping Weight	120 LBS	255 LBS	177 LBS.	286 LBS	250 LBS	250 LBS
Options:	Engines: Briggs & Stratton, Honda or Diesel					
Motors:	Explosion proof, Variation in Hertz, Voltage and Phase					

Hydrostatic Test Pumps • Post Hole Diggers • Shoring Pressure Pumps • Hand Pumps

RICE HYDRO, INC. - MANUFACTURER'S OPERATING INSTRUCTIONS
TR-SERIES MODEL TEST PUMPS
FOR WARRANTY REGISTRATION CALL: 1-800-245-4777

REMEMBER THESE CAUTIONS:

1. **Electric Models** - Power source must meet voltage, phase, hertz and amperage requirements of electric motor, as stated on label. If an extension cord is used, requires at least 12 gauge 3 wire with maximum of 25 foot length.
2. Check all fluid levels prior to operating pump.
3. Use a sound 3/4" or larger supply hose.
4. DO NOT run dry or pump chlorine through the unit.
5. Protect the pump from freezing, FLUSH with anti-freeze.

CONNECTING THE PUMP:

1. Check oil level of engine as well as the oil level of pump thru sight glass, use 10W30 non-detergent as needed. **Electric Models** - With motor switch in the off position, connect power cord of motor to a standard wall outlet. Extension cord: when needed, requires a 12 gauge 3 wire, maximum 25 foot length plugged into a 20 or larger amp breaker, depending on individual motor requirements.
2. Connect **CLEAN** pressurized water source (minimum 3/4") to the inlet of the pump. It is recommended that the unit be pressure fed. For gravity feed locate water within 8 feet and above level of unit, and then prime the pump.
3. Connect high pressure outlet hose to the pump and your test environment.

OPERATING THE PUMP:

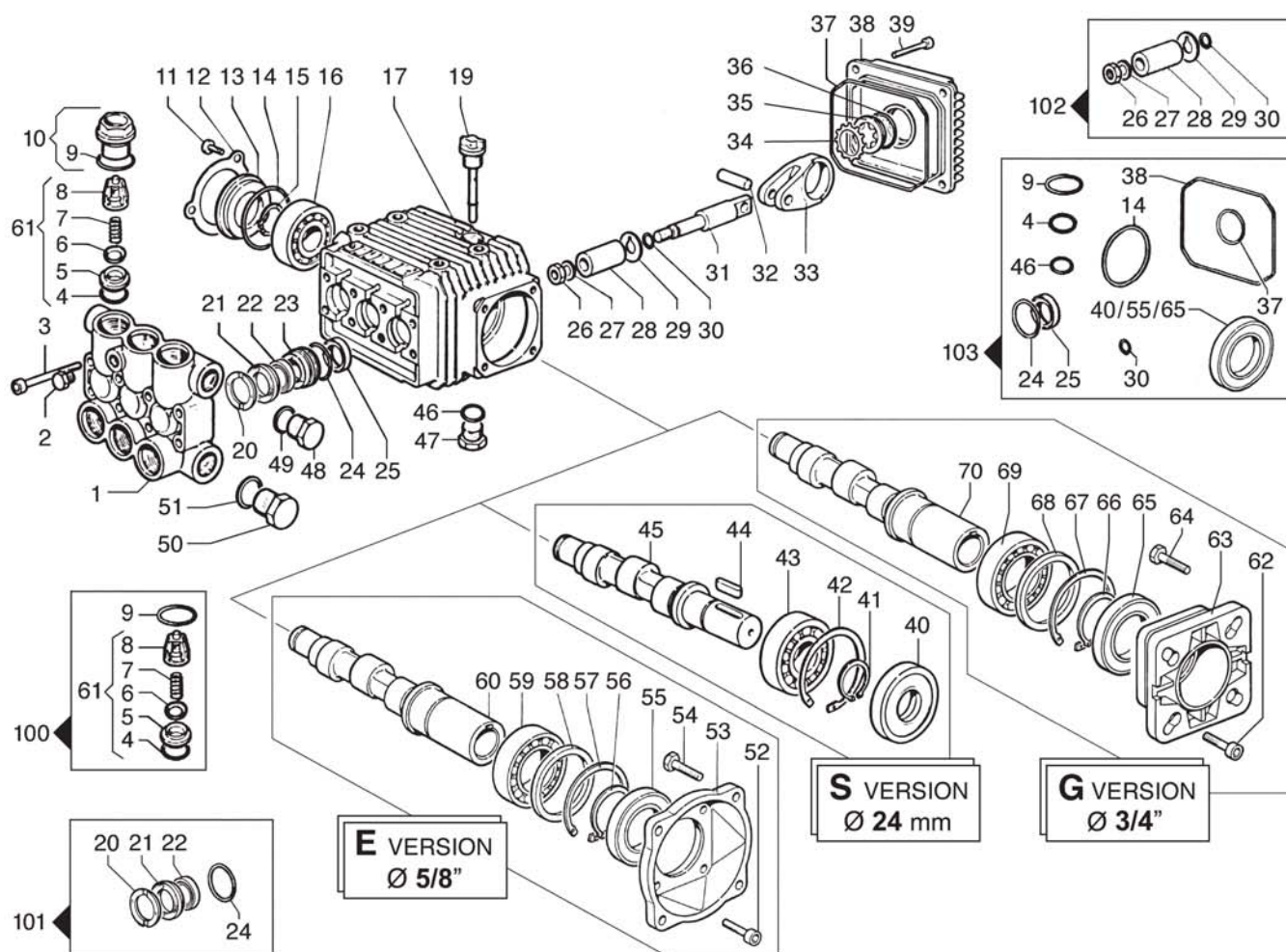
1. Turn the outlet ballvalve to the open position, begin water flow and start the engine. The engine RPM is preset at the factory, **DO NOT ADJUST!**
2. The pressure regulator has been preset at the factory. **To change this setting you must make this adjustment while the water is flowing freely, and under NO pressure.** To adjust the pressure, first loosen the locknut. Turn the T-handle/Knob clockwise to increase and counter-clockwise to decrease the pressure. Place a ballvalve or similar open and close valve at the end of the outlet hose, open and close this valve multiple times as needed, to check pressure setting and re-adjust as necessary. It is also recommended that you open and close the hosebib located under the gauge to bleed excess air from piping and ensure accurate pressure gauge readings. Upon reaching desired pressure setting, tighten locknut and prepare to begin test.
3. With the ballvalve open begin building pressure in the test environment. Be sure to bleed the air from hosebib under gauge at least once during this process. Once test pressure has been reached, **close the ballvalve and shut-off engine.**
4. Once the outlet ballvalve is closed and your test begins, you have now isolated the test pump from the test environment, any loss of pressure is due to leaks or trapped air being compressed in the test environment.

RECOMMENDED PERIODIC MAINTENANCE PROCEDURE

1. Plunger pump - Change oil in the pump body after first 50 hours of use, and every 250 hours thereafter. Change oil in the engine after first 5 hours of use, and every 80 hours thereafter.



WARNING: Operating, servicing and maintaining this equipment can expose you to chemicals including engine exhaust, carbon monoxide and lead, which are known to the State of California to cause cancer and birth defects or other reproductive harm. To minimize exposure, avoid breathing exhaust, do not idle the engine except as necessary, operate and service your equipment in a well-ventilated area and wear gloves or wash your hands frequently when servicing your equipment. For more information go to: www.p65warnings.ca.gov



N°	Cod.	Descrizione	Description	Note	Qty	Model
1	3218 0317	Testata Pompa Ottone	Brass Pump Manifold	Ø15	1	
2	3202 0018	Tappo	Cap	G1/8	1	
3	3609 0108	Vite	Screw	M6x55	8	
4	1210 0046	Guarnizione OR	O-Ring	2,62x17,13	6	
5	3009 0087	Sede Valv. Aspir./Mand.	Suct./Del. Valve Seat		6	
6	3604 0017	Valvola Aspir./Mand.	Suct./Del. Valve		6	
7	1802 0177	Molla Valv. Asp./Mand.	Suct./Del. Valve Spring		6	
8	1205 0025	Gabbia Valv. Asp./Mand.	Suct./Del. Valve Cage		6	
9	1210 0048	Guarnizione OR	O-Ring	2,62x20,24	6	
10	3202 0312	Tappo + OR	Cap + O-Ring		6	
11	3609 0088	Vite	Screw	M5x10	3	
12	1004 0012	Flangia Tenuta	Crankcase Flange		1	
13	0402 0172	Coperchio	Cover		1	
14	1210 0386	Guarnizione OR	O-Ring	3,53x44,04	1	
15	3019 0011	Seeger Esterno	Outer Seeger		1	
16	0438 0066	Cuscinetto a Sfere	Ball Bearing	20x52x15	1	
17	0403 0128	Carter Pompa	Pump Crankcase		1	
19	3200 0051	Asta Livello Olio	Oil Dipstick		1	
20	0009 0196	Anello Pressione	Packing Head Ring	Ø15	3	
21	1241 0065	Guarnizione Tenuta	Packing	Ø15	3	
22	1241 0030	Guarnizione Tenuta	Packing	Ø15	3	
23	0009 0198	Anello Portaguarniz.	Packing Retainer	Ø15	3	
24	1210 0223	Guarnizione OR	O-Ring	1,78x26,7	3	
25	0019 0095	Anello Tenuta	Oil Seal	15x24x5	3	
26	0600 0048	Dado Speciale	Special Bolt		3	
27	2811 0080	Rondella	Washer	8,2x14x1,5	3	

N°	Cod.	Descrizione	Description	Note	Qty	Model
28	0202 0020	Bussola Ceramica	Ceramic Bushing	Ø15	3	
29	2812 0038	Rondella	Washer		3	
30	1210 0055	Guarnizione OR	O-Ring	1,78x6,07	3	
31	2409 0044	Pistone Guida	Piston Guides		3	
32	3011 0014	Spinotto	Gudgeon Pin		3	
33	0205 0048	Kit Biella	Con. Rod Assembly		3	
34	3019 0033	Seeger Esterno	Outer Seeger	Ø28	1	
35	3201 0026	Spia Livello Olio	Oil Indicator		1	
36	1210 0333	Guarnizione OR	O-Ring	1,78x23,52	1	
37	1210 0621	Guarnizione OR	O-Ring	3,0x94	1	
38	0402 0142	Coperchio Carter	Crankcase Cover		1	
39	3609 0041	Vite	Screw	M6x25	4	
40	0019 0094	Anello Tenuta	Oil Seal	25x62x10/7	1	
41	3019 0006	Seeger Esterno	Outer Seeger		1	
42	3020 0012	Seeger Interno	Inner Seeger		1	
43	0438 0075	Cuscinetto a Sfere	Ball Bearing	25x62x17	1	
44	1602 0045	Linguetta	Key	8x7x25	1	
45	0001 0286	Albero Passante	Throughshaft	Ø24	1	2015 S
46	0001 0332	Albero Passante	Throughshaft	Ø24	1	3020 S
47	1210 0441	Guarnizione OR	O-Ring	2x14	1	
48	3200 0007	Tappo	Plug	3/8 GAS	1	
49	3200 0007	Tappo	Plug	3/8 GAS	1	
50	2811 0084	Rondella	Washer	16,7x22x1,5	1	
51	3202 0015	Tappo	Plug	G1/2	1	
52	2811 0086	Rondella	Washer	21,2x27x1,5	1	
53	3609 0032	Vite	Screw	M6x20	4	

3400 RPM

N°	Cod.	Descrizione	Description	Note	Qty	Model
53	3016 0016	Flangia	Flange	NEMA 56 C	1	
54	3607 0200	Vite Testa Esagonale	Hexagonal Screw	3/8"16 UNX3/4"	4	
55	0019 0075	Anello Tenuta Olio	Oil Seal	35x62x7	1	
56	3019 0004	Seeger Esterno	Outer Seeger	Ø35	1	
57	3020 0012	Seeger Interno	Inner Seeger	Ø62	1	
58	2812 0064	Rondella Distanziale	Spacer		1	
59	0438 0015	Cuscinetto a Sfera	Ball Bearing	35x62x14	1	
60	0001 0336	Albero Femmina	Hollow Shaft	Ø 5/8"	1	2015 E - 2020 E
	0001 0337	Albero Femmina	Hollow Shaft	Ø 5/8"	1	3020 E
	0001 0532	Albero Femmina	Hollow Shaft	Ø 5/8"	1	3522 E
61	1220 0030	Gruppo Valv. Asp./Mand.	Suct./Del. Valve Assy kit		6	
62	3609 0032	Vite	Screw	M 6x20	4	
63	3016 0012	Flangia	Flange	SAE J 609 A	1	
64	3607 0199	Vite Testa Esagonale	Hexagonal Screw	5/16"24 UNX3/4"	4	
65	0019 0075	Anello Tenuta Olio	Oil Seal	35x62x7	1	
66	3019 0004	Seeger Esterno	Outer Seeger	Ø35	1	
67	3020 0012	Seeger Interno	Inner Seeger	Ø62	1	
68	2812 0064	Rondella Distanziale	Spacer		1	

N°	Cod.	Descrizione	Description	Note	Qty	Model
69	0438 0015	Cuscinetto a Sfera	Ball Bearing	35x62x14	1	
70	0001 0334	Albero Femmina	Hollow Shaft	Ø 3/4"	1	2020 G
	0001 0406	Albero Femmina	Hollow Shaft	Ø 3/4"	1	2520 G - 2525 G
	0001 0451	Albero Femmina	Hollow Shaft	Ø 3/4"	1	3020 G - 3025 G
	0001 0383	Albero Femmina	Hollow Shaft	Ø 3/4"	1	3515 G - 3522 G

Kit Ricambi

Spare Parts Kit

100	5025 0011	Kit Valvole	Valve Kit		1	
101	5019 0035	Kit Guarnizioni Acqua	Water Seal Kit	Ø15	1	
102	2409 0071	Kit Pistone	Piston kit	Ø15	1	
103	5019 0040	Kit Guarnizioni Olio	Oil Seal Kit	Male/Solid	1	2015 S - 3020 S
	5019 0041	Kit Guarnizioni Olio	Oil Seal Kit	Femmina/ Hollow	1	2015 E - 2020 E 2020 G - 2520 G 2525 G - 3020 G 3020 E - 3025 G 3515 G - 3522 G 3522 E

PARTS BREAKDOWN FOR MODEL TRH-2

RICE HYDRO, INC.

**** Serial numbers #60424 and after ******PUMP PARTS:**

REF#	PART NUMBER..	DESCRIPTION..	REQ'D
1	LWD-3218-0317	BRASS PUMP MANIFOLD	1
2	LWD-3202-0018	CAP	1
3	LWD-3609-0108	SCREW	8
9	LWD-1210-0048	O-RING	6
10	LWD-3202-0312	CAP & O-RING	6
11	LWD-3609-0088	SCREW	3
12	LWD-1004-0012	CRANKCASE FLANGE	1
13	LWD-0402-0172	COVER	1
14	LWD-1210-0386	O-RING	1
15	LWD-3019-0011	OUTER SEEGER	1
16	LWD-0438-0066	BALL BEARING	1
17	LWD-0403-0128	PUMP CRANKCASE	1
19	LWD-3200-0051	OIL DIPSTICK	1
20	LWD-0009-0196	PACKING HEAD RING	3
21	LWD-1241-0065	PACKING	3
22	LWD-1241-0030	PACKING	3
23	LWD-0009-0198	PACKING RETAINER	3
24	LWD-1210-0223	O-RING	3
25	LWD-0019-0095	OIL SEAL	3
26	LWD-0600-0048	SPECIAL BOLT	3
27	LWD-2811-0080	WASHER	3
28	LWD-0202-0020	CERAMIC BUSHING	3
29	LWD-2812-0038	WASHER	3
30	LWD-1210-0055	O-RING	3
31	LWD-2409-0044	PISTON GUIDES	3
32	LWD-3011-0014	GUDGEON PIN	3
33	LWD-0205-0048	CONNECTING ROD ASSY	3
34	LWD-3019-0033	OUTER SEEGER	1
35	LWD-3201-0026	OIL INDICATOR	1
36	LWD-1210-0333	O-RING	1
37	LWD-1210-0621	O-RING	1
38	LWD-0402-0142	CRANKCASE COVER	1
39	LWD-3609-0041	SCREW	4
46	LWD-1210-0441	O-RING	1
47	LWD-3200-0007	DRAIN PLUG	1
48	LWD-3200-0007	PLUG	1
49	LWD-2811-0084	WASHER	1
50	LWD-3202-0015	PLUG	1
51	LWD-2811-0086	WASHER	1
61	LWD-1220-0030	VALVE ASSY KIT	6
62	LWD-3609-0032	SCREW	4
63	LWD-3016-0012	FLANGE	1
64	LWD-3607-0199	HEXAGONAL SCREW	4
65	LWD-0019-0075	OIL SEAL	1
66	LWD-3019-0004	OUTER SEEGER	1
67	LWD-3020-0012	INNER SEEGER	1
68	LWD-2812-0064	SPACER	1
69	LWD-0438-0015	BALL BEARING	1
70	LWD-0001-0451	HOLLOW SHAFT	1
REF# KITS:			
100	LWD-5025-0011	VALVE KIT	1
101	LWD-5019-0035	WATER SEAL KIT	1
102	LWD-2409-0071	PISTON KIT	1
103	LWD-5019-0041	OIL SEAL KIT	1

PARTS BREAKDOWN FOR MODEL TRH-2
RICE HYDRO, INC.

**** Serial numbers #60424 and after ****

MISCELLANEOUS PARTS..

HONDA-GX200UT2-QX2	196 CC FLANGE MOUNT HONDA	1
MUFFLER-CAP-GX200	HONDA MUFFLER CAP	1
PUMP-PLGR-3.0/20	TRIPLEX PLUNGER PUMP	1
GAUGE-3000	LIQUID FILLED GAUGE	1
BALLVALVE-3/8HP	OUTLET BALLVALVE	1
NEEDLEVALVE-1/4	BLEED VALVE	1
HOSESWIVEL-1/2	SWIVEL HOSE INLET	1
LINESTRAINER-1/2	INLET LINE STRAINER	1
LABEL-KIT-TR	INSTRUCTION AND CAUTION STICKERS	1
VALVE-RELIEF-2000PSI	PRESSURE REGULATOR	1

OUTLET HOSE..

HOSE-3/8X8-RH	8' FOOT OUTLET HOSE - STANDARD	1
<i>*3/8" Male Rigid Fitting & 3/8" Male Swivel Fitting included on 8ft outlet hose</i>		
COUPLERBODY-BR-3/8F	FEMALE PUMP OUTLET - HOSE	1
COUPLERPLUG-3/8M	MALE PUMP OUTLET - PIPING	1
HOSE-3/8-3000XFT	SPECIFY LENGTH OF HOSE	
3/8" Male Rigid Fitting & 3/8" Male Swivel Fitting		1