

POST HOLE DIGGERS

Got holes, just whistle for the DAWG...

The “**DIRTDAWG**” a contractor’s best friend. One and two-man units, towable and handheld, hydraulic and mechanical. All units engineered with precision, high-quality components, and functions, providing you with rugged, durable, and dependable equipment. Accessories include a variety of adapters, auger bits, extensions, teeth and display stands, along with post pounders and pullers.

DIRTDAWG-9HON-T

- 9 GPM, 351 ft lbs. torque, 83 RPM.
- Three-year warranty from manufacturers defect.
- Bit diameters from 2 to 18 inch, lengths available in 36” or 42”.
- Telescoping handle, twists 180 degrees for accurate digging on hills and slopes.
- Forward and reverse auger drive operation.
- Integrated locking tow hitch, allows for towing at highway speeds, bearing buddies.
 - Axle length 44” for digging and towing stability. Retracts to 35 ½” access through gates, walkways, and tight spaces.
 - Made in America from components sourced in the USA and globally.



Auger bits sold separately

DIRTDAWG -TM11



Stand and auger bits sold separately

- 190 ft lbs. torque.
- One-year warranty from manufacturers defect.
- Bit diameters from 2 to 12 inch, lengths available in 36" or 42".
- Oil sight glass, for quick fill and level control.
- Timken tapered roller bearings, less maintenance and longer life.
- All gear drive transmission for maximum power.
- Centrifugal clutch slips when encountering digging obstruction.
- Engine Kill Switch from both operator positions.
- Made in America from components sourced in the USA and globally.

DIRTDAWG-CUB



Stand and auger bits sold separately

- One-year warranty from manufacturers defect.
- Compact lightweight design.
- Hip Saver Pad.
- Stand-Alone Frame for easy storage on shelf.
- PROGRIP hand grips.
- Made in America from components sourced in the USA and globally.
- Auger bits available:
 - 6" x 36"
 - 8" x 36"
 - 8" x 36" ice fishing bit.

DIRTDAWG-9HON-T and DIRTDAWG-TM11 ACCESSORIES



Auger Bits available in 6", 8", 10" or 12" diameter with either 36" or 42" length. Standard 7/8" square drive, with various drive styles available.



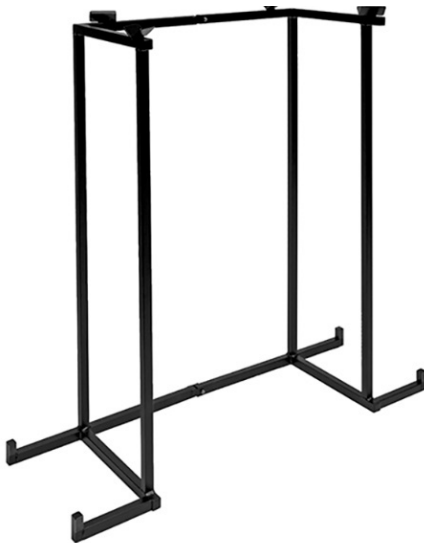
Adapters styles available in multiple configurations to take advantage of your existing auger bit inventory.



Extensions available in 6", 12", 24" and 36" lengths. Optional drive styles available. (Maximum extension on TM11 unit is 12")



Auger teeth and pilot bits available in several different styles and sizes, to meet all your digging needs.



TM-11 STAND

Heavy duty welded steel framework, with a black powder coated finish. Designed for quick and easy storage of your DIRTDAWG-TM11 and related auger bits. This stand holds the unit with attached bit, and four additional auger bits.

DIRTDAWG-CUB ACCESSORIES

The DIRTDAWG-CUB is available with three auger bit options, 6 or 8-inch, or "Ice fishing" auger bit with dual carbide steel blades. Welded industrial steel, with a powder coated finish. Designed for maximum digging power.



Replacement blades available.





DIRTDAWG-CUB STAND

Heavy duty welded steel framework, with a black powder coated finish. Designed for quick and easy storage of your DIRTDAWG-CUB and related auger bits. The CUB stand holds the unit with attached bit, and two additional auger bits.



POST PULLERS

Manufactured of heavy duty welded steel. Two-piece construction eliminates common pinch points. Well balanced 6" base. Durable powder coated finish.

Styles include: T-Post Puller
 Choker Puller
 Combo T-Post and Choker Puller



POST POUNDERS

Ergonomically designed with large handles for comfortable gripping, minimizes force and vibration felt by the operator.

Available in three sizes:

2"	= 15 Pounds of Force
2 & 1/2"	= 22 Pounds of Force
3"	= 37 Pounds of Force



Combo Package Available

Are you ready to run... with the Big DAWGS!



3500 Arrowhead Drive • Carson City • Nevada 89706

Web: ricehydro.com • Email: sales@ricehydro.com • Phone: 800-245-4777 • Fax: 800-998-7423

ASSEMBLY INSTRUCTIONS

(1) LEFT HAND MARKED “OPERATOR” HANDLE



(1) MARKED “ASSISTANT” KILL SWITCH ASSISTANTS HANDLE



(1) MARKED “LEAN ON THESE HANDLES”



(1) RIGHT HAND THROTTLE HANDLE



(1) TRANSMISSION HONDA ENGINE



RECOMMENDED TOOLS:

½” WRENCH



½” SOCKET RACHET



SCREWDRIVER

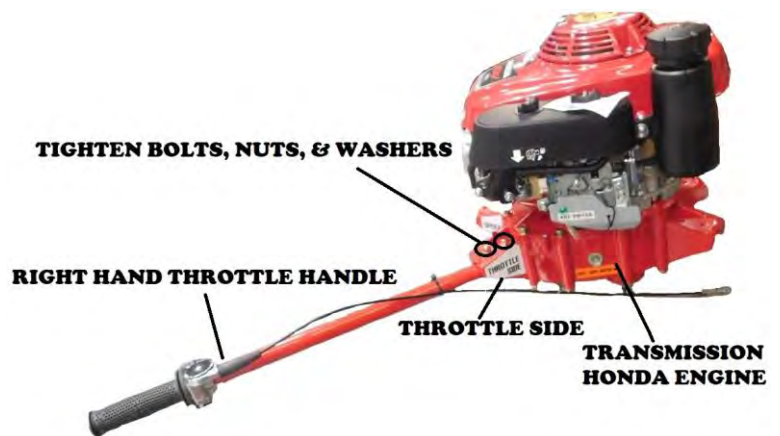


CONNECTING HANDLES

PLACE TRANSMISSION HONDA ENGINE ON A SECURE TABLE FOR ASSEMBLY. CONNECT TWO HANDLES ON ONE SIDE THEN CONNECT THE OTHER TWO ON OPPOSITE SIDES TO BALANCE.

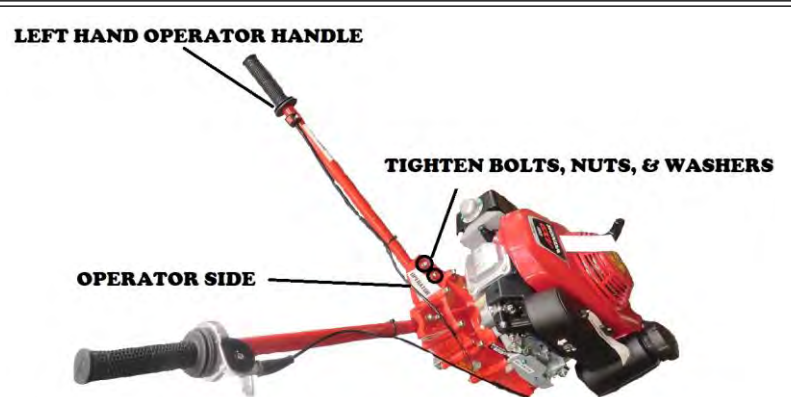
Step 1. CONNECT RIGHT HAND THROTTLE HANDLE WITH LABELED THROTTLE SIDE OF TRANSMISSION

Connect OPERATOR RIGHT HAND THROTTLE into TRANSMISSION HONDA ENGINE where it says THROTTLE SIDE. Place anti-vibration vinyl tubing between handles connection and transmission. Use Wrench to secure tightly in place with bolts, nuts & washers provided. *Note, right hand throttle handle is the only one that the handle can twist.



Step 2. CONNECT LEFT HAND HANDLE LABELED “OPERATOR” TO SIDE LABELED OPERATOR ON TRANSMISSION

Connect the handle marked “OPERATOR” into TRANSMISSION HONDA ENGINE where it says OPERATOR in a position directly to the left of the marked throttle handle. Place anti-vibration vinyl tubing between handles connection and transmission. Use Wrench to secure tightly in place with bolts, nuts & washers provided.



Step 3. CONNECT LEFT SIDE HANDLE LABELED “ASSISTANT” TO SIDE LABELED ASSISTANT ON TRANSMISSION

Move around to the “ASSISTANT” side of your TRANSMISSION HONDA ENGINE and securely connect the assistant left side handle. Place anti-vibration vinyl tubing between handles connection and transmission. Use Wrench to secure tightly in place with bolts, nuts & washers provided



Step 4. CONNECT RIGHT HAND LEAN ON THIS HANDLE TO UNLABELED SIDE ON TRANSMISSION

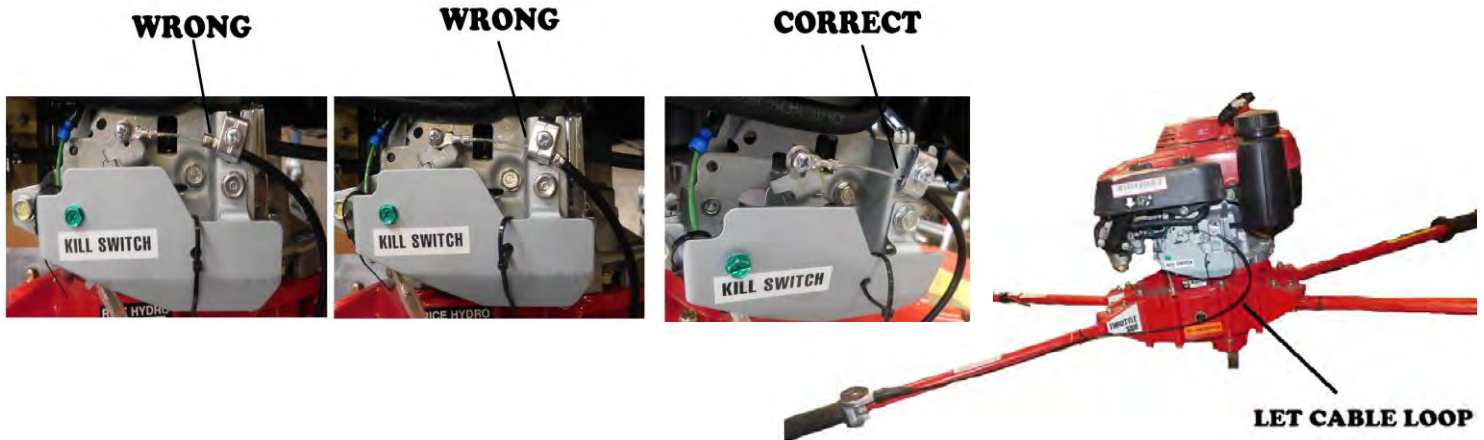
Connect the handle marked “LEAN ON THIS HANDLE”. Place anti-vibration vinyl tubing between handles connection and transmission. Use Wrench to secure tightly in place with bolts, nuts & washers provided.



CONNECTING CABLE WIRES

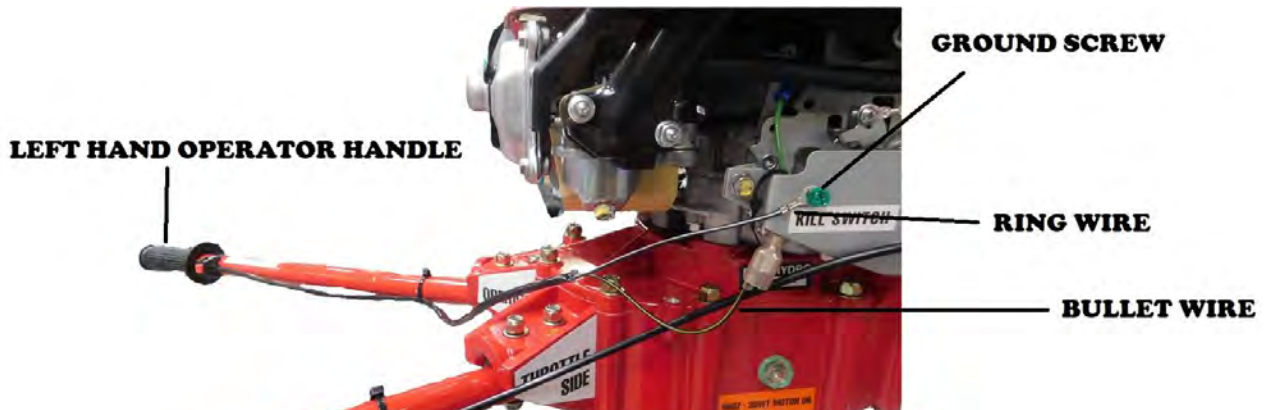
Step 1. CONNECT RIGHT HAND THROTTLE HANDLE CABLE WIRE

As shown in picture, connect the throttle cable thru clamp, securing clamp at the one o'clock positions then secure the cable eyelet & tighten screw. *To prevent binding of the throttle cable, maintain loop as shown in picture.



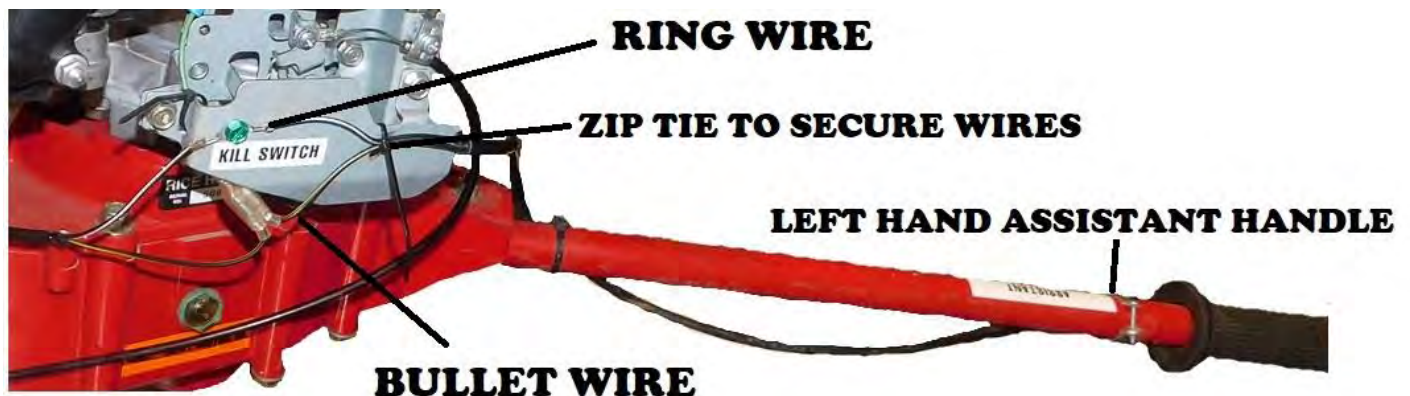
Step 2. CONNECT LEFT HAND OPERATOR THROTTLE CABLE WIRE

You are now ready to connect the “RING” & “BULLET” WIRES from the OPERATOR HANDLE. Remove the GROUND SCREW (GREEN IN COLOR) on top of the KILL SWITCH sticker. Place OPERATOR “RING WIRE” over ground screw, and center. Next, connect the “BULLET WIRE” from the OPERATOR. Slide bullet into plastic sleeve on receiver wires. *Side or color of wires or receivers are not specific.



Step 3. CONNECT ASSISTANT THROTTLE CABLE WIRE


You are now ready to connect the “RING” & “BULLET” WIRES for the ASSISTANT HANDLE. Remove the GROUND SCREW (GREEN IN COLOR) on top of the KILL SWITCH sticker. Place ASSISTANT “RING WIRE” over OPERATOR “RING WIRE” & use GROUND SCREW to tighten, and center. Next, connect the “BULLET WIRE” from the OPERATOR. Slide bullet into plastic sleeve on receiver wires. Use zip ties & snugly secure wires.



RICE Hydro, Inc.

Dirt Dawg-TM11

Two Man Post Hole Digger – gas powered

 **WARNING:** Operating, servicing and maintaining this equipment can expose you to chemicals including engine exhaust, carbon monoxide and lead, which are known to the State of California to cause cancer and birth defects or other reproductive harm. To minimize exposure, avoid breathing exhaust, do not idle the engine except as necessary, operate and service your equipment in a well-ventilated area and wear gloves or wash your hands frequently when servicing your equipment. For more information go to: www.p65warnings.ca.gov

WARNING & SAFETY instructions:

- *TURN THE FUEL VALVE TO THE OFF POSITION:* Your **DIRTDAWG-TM11** is equipped with a float type carburetor; this unit's fuel valve should remain in the OFF position when not in use, to prevent flooding of the carburetor. Flooding of the carburetor may result in direct damage to the engine, personal injury or other property damage.
- *NOT IN USE – STORAGE OF UNIT:* To properly store your **DIRTDAWG-TM11** when not in use; properly shut off fuel valve, and store in the correct position as instructed by labels directly on unit. Failure to properly store your unit may result in damage effecting the operation of your unit.
- *FLUID LEVELS:* Always check and maintain proper levels of engine & transmission OIL. The transmission holds 46 ounces of 30WT motor oil. In viewing the **DIRTDAWG-TM11** transmission sight glass the fluid level should be directly in the middle lined up with the red dot. The engine requires around 1/2 quart of 30WT motor oil, when checking dipstick your fluid level should reach the FULL setting as marked.
- *DANGER & SAFETY PRECAUTIONS:* Improper use or neglecting to follow all manufacturers operation and safety instructions can result in property damage, or personal injury including death. Call 811 before you dig. Completely read and understand the manufacturers operating instructions on your **DIRTDAWG-TM11**, or contact **RICE Hydro** customer service with any questions or lack of understanding at 800-245-4777. Or you may obtain a copy directly from our website ricehydro.com.

- **PRECAUTIONS:**

1. During operation – Do not wear loose fitting, or frayed clothing that may become entangled in rotating auger bit or other moving parts.
2. Always keep hands, arms, feet, and legs clear of rotating auger bit, and WEAR proper safety eye protection.
3. Engine and fuel valve should always be in the OFF position when changing out auger bit. DO NOT ATTEMPT TO CHANGE AUGER BIT WITH UNIT RUNNING.
4. Remove auger bit before storing or transporting unit.
5. During extended use, some components may become HOT, DO NOT TOUCH. Use handles for all hands on control.
6. CAUTION BEFORE DIGGING – Always check with local utility companies to determine / verify location of existing cables, lines, or piping.
7. Do not try and operate post hole digger alone, both operator and assistant should be of physical stature and strength to handle/operate this unit. Each should have the proper level of skill, experience and common sense to operate this machinery.
8. Do not fill oil and gas with engine running or hot from extended use. Do not smoke cigarettes or have any flame/igniter located near the engine while fueling.
9. NOT following ALL engine and post hole digger manufacturers' warnings, instructions, or cautions will void any warranty claim, on the **DIRTDAWG-TM11**.

- **MAINTENANCE:** Check ALL fluids before each use. SAE 10w30 motor oil is recommended. Oil level should be filled to meet sight glass and / or dipstick measurement as notated above. For maintenance on the **DIRTDAWG-TM11** change oil within the 1st month, or after 20 hours of use, and every 6 months or 100 hours of use, thereafter.

RICE HYDRO, INC.

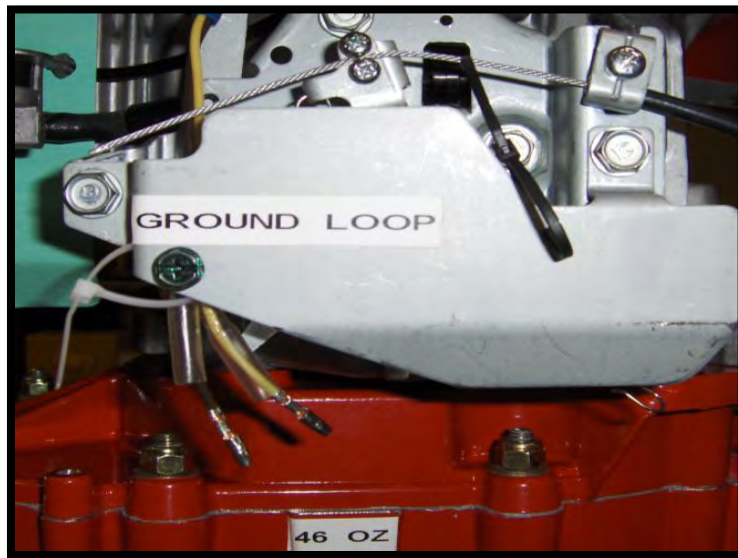
CONTACT CUSTOMER SERVICE INFORMATION:

For assistance in use, operation, design change or capability, or special order options on your **DIRTDAWG-TM11** please contact RICE Hydro Inc. 3500 Arrowhead Drive Carson City, NV 89706, or (800) 245-4777, direct number (775) 885-1280 or email ricehydro@ricehydro.com.

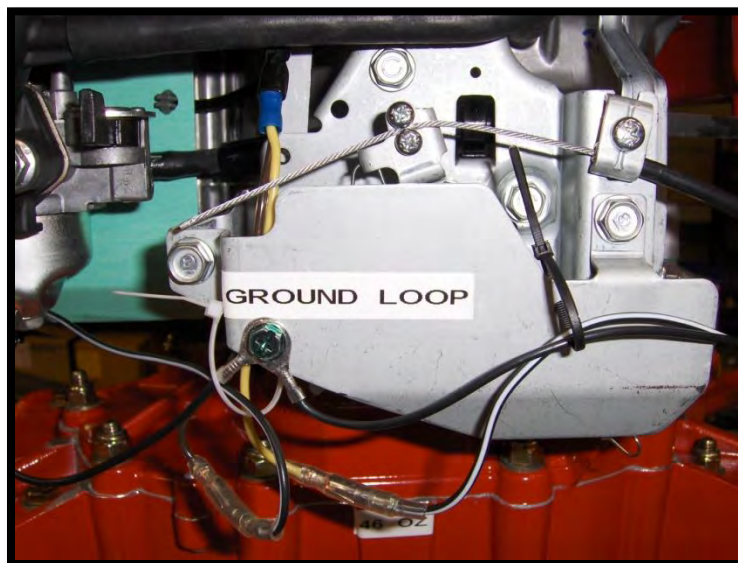
Original setup & Operation instructions

RICE Hydro, Inc. DIRTDAWG-TM11

Two Man Post Hole Digger – Gas powered



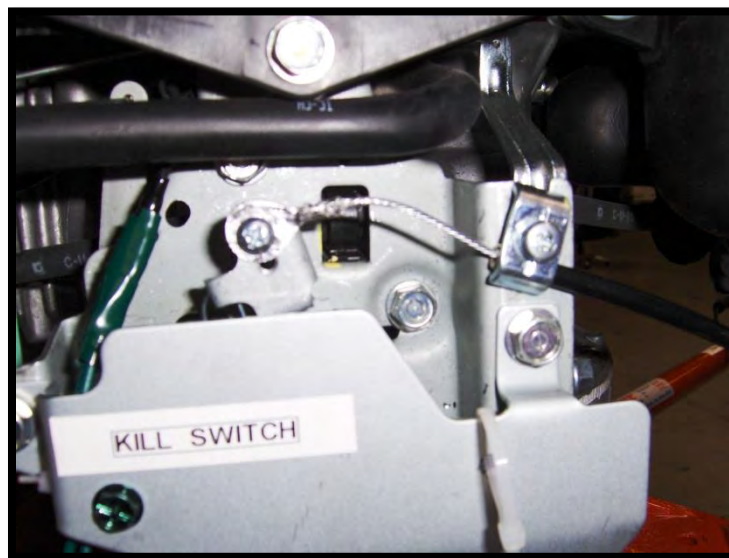
View #1 before attaching wires.



View #2 after attaching wires.

Assembly instructions:

1. Remove post hole digger and separate handles from packaging.
Pieces included: post hole digger unit, 1 each operator throttle control handle, 1 each kill switch operator handle, 1 each kill switch assistants handle, and 1 each left side assistants handle.
2. Place post hole digger on a large secure table for assembly, positioning the handles in their proper position for connection. When attaching handles as instructed below, place anti-vibration vinyl tubing between and handle connection and transmission case. Connect operator right hand throttle handle assembly, secure tightly in place with bolts, nuts, and washers provided. Connect the handle marked “operator” in position directly to the left of the throttle handle securing tightly in place with bolts, nuts, and washers provided.
3. Move around to the “assistant” side of your post hole digger, and securely connect the assistant left side handle. Next connect the assistant kill switch handle on the right side of unit nearest the ground loop sticker, under engine carburetor. Tightly secure all handles with bolts, nuts, and washers provided.



4. As shown in picture above, connect the throttle cable thru clamp, securing clamp at the one o'clock position; then secure the cable eyelet and tighten screw. To prevent binding of the throttle cable, maintain angles as shown in the picture above. You are now ready to connect the "ring" and "bullet" connections for both the operator and assistant kill switch handles. Using the pictures above as a guide, remove the ground screw (green in color) directly below the ground loop sticker. Place both rings, (operator & assistant) over ground screw hole, and center. Replace ground screw and tightly secure with screwdriver.
5. You are now ready to connect the "bullet" wire from each side, the operator and the assistant. Take each bullet and slide into plastic sleeve on receiver wires located directly below and to the left of the ground wire connections. ***Sides or colors of wires or receivers are not specific.*** Use attached zip ties and snugly secure all wires.
6. Add fluids, this unit takes around 2 quarts of oil to fill; follow instructions from manufacturer's labels on engine to fill with 10w30 motor oil as directed, about 1/2 quart. Check level with dipstick as instructed. Then remove sight glass from side of transmission case and fill with the 46 ounces of remaining motor oil. Replace sight glass ensuring gasket is still intact. ***DO NOT OVER TIGHTEN PLASTIC SIGHT GLASS, IT WILL BREAK.*** Unit is now assembled and ready for operation.

Operation instructions:

1. Check all fluids and fill as necessary.
2. Attach desired auger bit to shaft and secure with locking hitchpin, as provided.
3. Position post hole digger at digging site, and turn on fuel.
4. With both operator and assistant both in position and completely in control of unit, start the engine.
5. Operator has control of throttle lever and can begin to twist engaging the auger for digging. Twisting the throttle back will place the unit in neutral; allowing the operator / assistant to clear debris and rocks, or while moving to the next digging location / hole.
6. Each side comes equipped with an EMERGENCY KILL SWITCH. In the case of any type of emergency either the operator or assistant can hit the red kill button to stop engine immediately.
7. Always check and maintain all auger bits before use; worn, lost, or damaged bits, pilot bits, or teeth may result in damage to the unit, property or personal injury.
8. Never use more than one non-flighted extension at a time.

RICE HYDRO, INC.

CONTACT CUSTOMER SERVICE INFORMATION:

For assistance in use, operation, design change or capability, or special order options on your **DIRTDAWG-TM11** please contact RICE Hydro Inc. 3500 Arrowhead Drive Carson City, NV 89706, or (800) 245-4777, direct number (775) 885-1280 or email ricehydro@ricehydro.com.

PARTS BREAKDOWN FOR MODEL TM-11
RICE HYDRO, INC.

REF:	PART NUMBER..	DESCRIPTION..	QTY REQ'D
COVER ASSEMBLY..			
1	HONDA-GXV160UH2-N1XH	5.5 HP HONDA ENGINE	1
2	AUGER-2MAN-COVER	TM-11 COVER	1
	<i>when ordering Auger-2man-Cover "BEARING-3/4X1" is also required</i>		
3	CLUTCH-TM11	TM-11 CLUTCH ASSY	1
4	FITTING-BREATHER-DD	BREATHER FITTING	1
5	MUFFLER-CAP-GX200	DIFFUSER	1
6	LOCKNUT-5/16X18	GR 8 5/16 X 18 LOCKNUT	1
7	SHCS-5/16X24X1	SOCKET HEAD CAP SCREW	3
8	PLUG-S-1/8	PORT PLUG	1
9	SHCS-5/16X18X2	SOCKET HEAD CAP SCREW	1
10	WDRFKEY-5/32X5/8	WOODRUFF KEY GEAR	2
11	D3-2811-0004	WASHER	1
14	DD-ORING-2228	COVER TO ENGINE	1
15	BEARING-3/4X1	OILITE TM-11	1
23	FLATWASHER-SAE-5/16	FLATWASHER	4

LOWER ASSEMBLY..			QTY
2	AUGER-2MAN-BODY	GEAR BODY	1
3	DOWELPIN-1/4X1		2
4	DRUM-ASSY-TM11	DRUM WITH GEAR AND BEARING	1
	<i>DRUM-TM11</i>		
	<i>BEARING-3/4X7/8</i>		
	<i>GEAR-DRUM-TM11</i>		
5	SPEC-02269	OIL SIGHT GLASS	1
6	LOCKNUT-5/16X18	GR 8 5/16 X 18 LOCKNUT	1
7	UD02-0605.43	GASKET FOR CRANKCASE	1
8	PLUG-DRAIN	CRANKCASE DRAIN	1
9	SPUR-GEAR-75T-5/8	5/8" SPUR GEAR on GEAR SHAFT	1
10	WDRFKEY-5/32X5/8	WOODRUFF KEY GEAR	1
11	MAIN-SHAFT-LOCKNUT	LOCKNUT	1
12	MAIN-SHAFT-WASHER	WASHER	1
13	GEAR-SHAFT-TM11	GEAR SHAFT	1
14	SPUR-GEAR-75T-1	1" SPUR GEAR on MAIN SHAFT	1
	<i>when ordering 1" Spur Gear "WDRFKEY-1/4x1" is also required</i>		
15	BEARING-3/4X1	OILITE TM-11	1
16	MAIN-SHAFT-TM11	MAIN SHAFT	1
	<i>when ordering Main-Shaft-TM11 "WDRFKEY-1/4x1 & MAIN-SHAFT-LOCKNUT" are also required</i>		
17	CONE-08125	TM-11 TAPER ROLLER BEARING	2
18	CUP-08231	TM-11 RACE	2
	<i>when ordering Cone-08125 OR Cup-08231 "OIL-SEAL & MAIN-SHAFT-LOCKNUT" are also required</i>		
19	HITCHPIN-5/16X2&3/4	SAFETY PIN	1
20	OIL-SEAL	OIL SEAL	1
21	BOLT-5/16X18X4&1/2	BOLT FOR TM11 BODY	8
22	WDRFKEY-1/4X1	WOODRUFF KEY MAIN SHAFT	1
23	FLATWASHER-SAE-5/16	FLATWASHER	18

MISC SECTION...

LABEL-KIT-TM11	INSTRUCTION AND CAUTION STICKERS	1
TM11-CHOKE	CHOKE CONTROL ADD ON ASSEMBLY	1

PARTS BREAKDOWN FOR MODEL TM-11
RICE HYDRO, INC.

ASSISTANT HANDLE ASSY..

4	GRIPS-1"	BLACK GRIPS	1
6	TM11-HANDLE	ASSISTANT - HANDLE ONLY	1
8	BOLT-5/16X18X2&1/4	BOLT FOR HANDLE	2
9	FLATWASHER-SAE-5/16	FLATWASHER	4
11	LOCKNUT-5/16X18	LOCKNUT FOR HANDLE	2

THROTTLE HANDLE ASSY..

3	THROTTLE-TM11	THROTTLE	1
4	GRIPS-1"	BLACK GRIPS	1
5	CABLE-THROTTLE-ASSY	TM-11 CABLE THROTTLE	1
7	TM11-HANDLE-THROTTLE	THROTTLE - HANDLE ONLY	1
8	BOLT-5/16X18X2&1/4	BOLT FOR HANDLE	2
9	FLATWASHER-SAE-5/16	FLATWASHER	4
11	LOCKNUT-5/16X18	LOCKNUT FOR HANDLE	2
13	ZIPTIE-MED	ZIPTIE	2

KILL SWITCH HANDLE ASSY (OPERATOR/ASSISTANT)...

4	GRIPS-1"	BLACK GRIPS	1
6	TM11-HANDLE	KILL SWITCH SIDE - HANDLE ONLY	2
8	BOLT-5/16X18X2&1/4	BOLT FOR HANDLE	2
9	FLATWASHER-SAE-5/16	FLATWASHER	4
11	LOCKNUT-5/16X18	HANDLE LOCKNUT	2
12	DD-KILL-SWITCH-ASSY	SWITCH ENGINE KILL	2
	<i>when ordering DD-KILL-SWITCH-ASSY "Locknut-Keps-6/32 & Mach-Screw-6/32" are included</i>		
13	ZIPTIE-MED	ZIPTIE	2

*if ordering **MAIN SHAFT** must also replace locknut*

MAIN-SHAFT-TM11	MAIN SHAFT	1
MAIN-SHAFT-LOCKNUT	LOCKNUT	1
WDRFKEY-1/4X1	WOODRUFF KEY MAIN SHAFT	1

*if ordering **CONE or CUP** must also replace locknut, seal, cup and cone*

CONE-08125	TM-11 TAPER ROLLER BEARING	2
MAIN-SHAFT-LOCKNUT	LOCKNUT	1
CUP-08231	TM-11 RACE	2
OIL-SEAL		1

*if ordering **BODY** must also replace bearing (pressed), cup, locknut and seal*

AUGER-2MAN-BODY	GEAR BODY	1
BEARING-3/4X1	OILITE TM-11	1
CUP-08231	TM-11 RACE	2
MAIN-SHAFT-LOCKNUT	LOCKNUT	1
OIL-SEAL	OIL SEAL	1
CONE-08125	TM-11 TAPER ROLLER BEARING	2

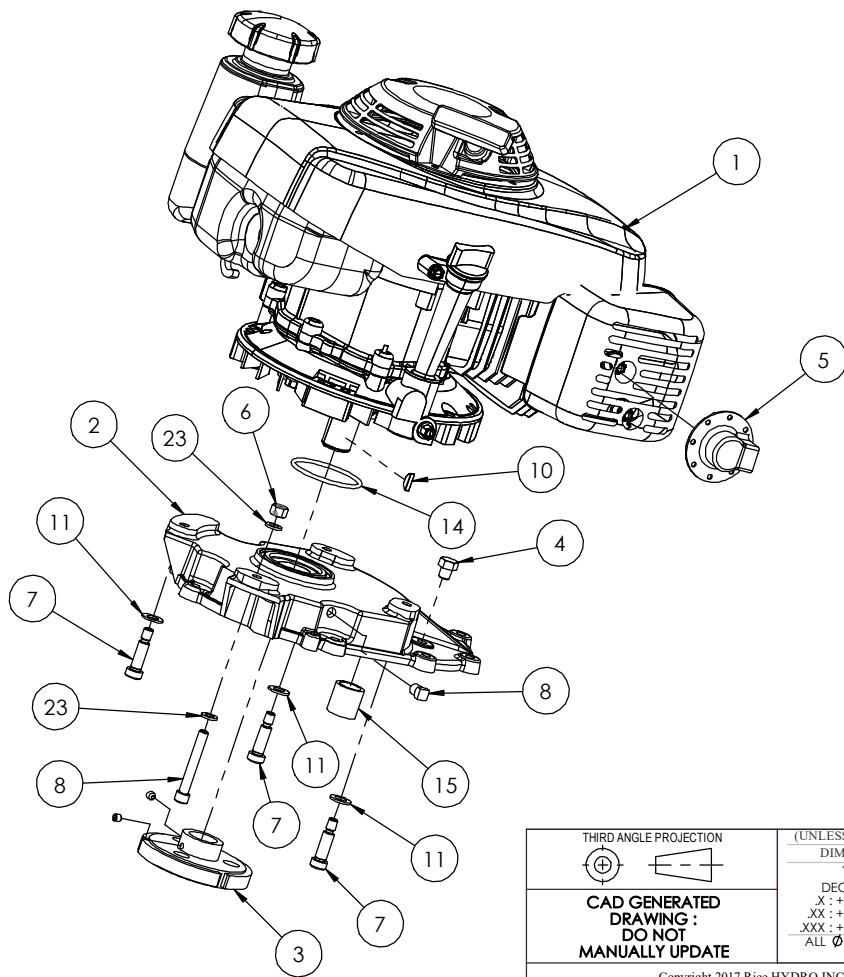
*if ordering **COVER** must also replace bearing (pressed)*

AUGER-2MAN-COVER	GEAR BODY COVER	1
BEARING-3/4X1	OILITE TM-11	1

*if ordering **DD-KILL-SWITCH-ASSY** will include*

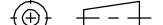
DD-KILL-SWITCH	SWITCH ENGINE KILL	1
LOCKNUT-KEPS-6/32	TM-11 KILL SWITCH LOCKNUT	1
MACH-SCREW-6/32	TM-11 KILL SWITCH SCREW	1

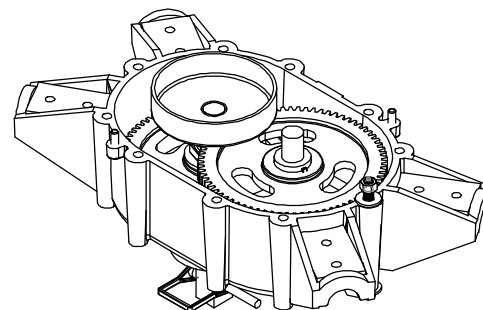
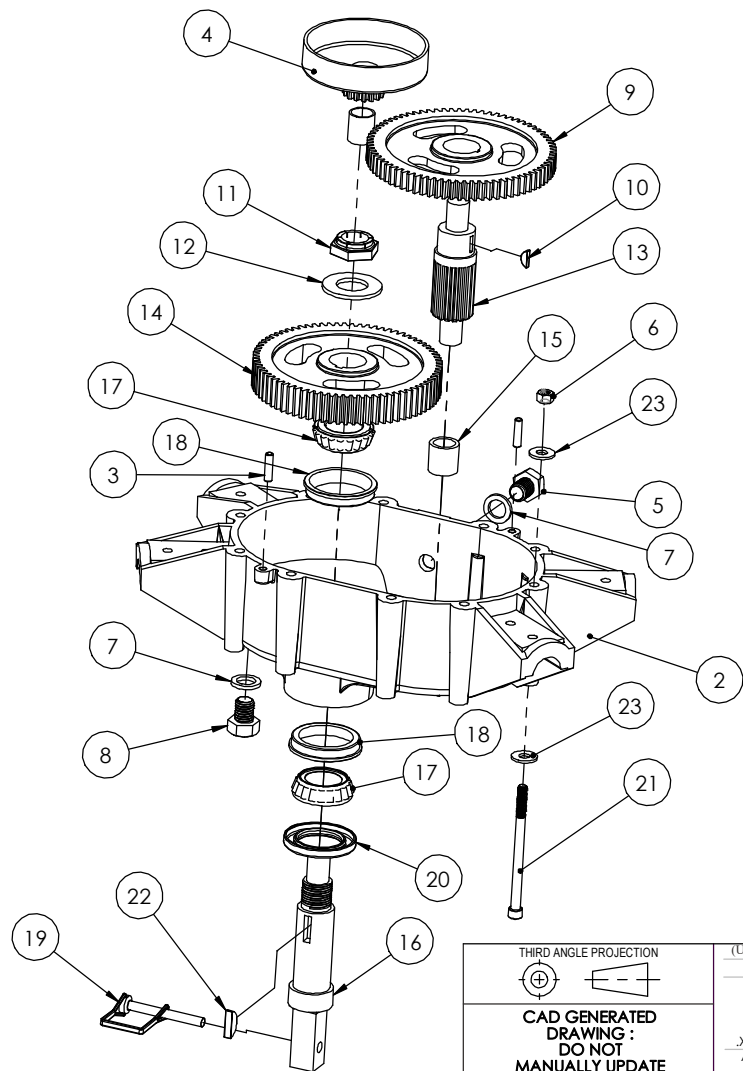
Prices subject to change without notice



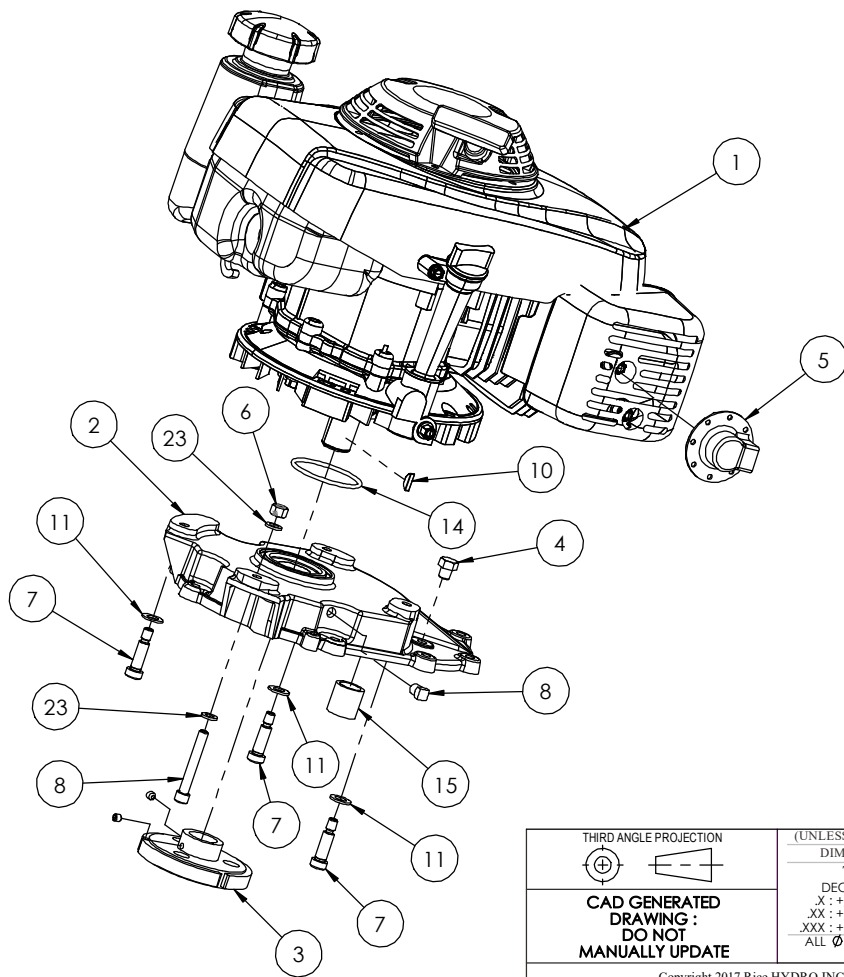
1.

NOTES: (UNLESS OTHERWISE SPECIFIED)

<div>THIRD ANGLE PROJECTION</div> <div></div> <div>CAD GENERATED DRAWING : DO NOT MANUALLY UPDATE</div>		<div>(UNLESS OTHERWISE SPECIFIED)</div> <div>DIMENSIONS IN INCHES</div> <div>TOLERANCES:</div> <div>DECIMALS ANGLES</div> <div>.X : +/- 0.050 X : +/- 1.0°</div> <div>.XX : +/- 0.020 XX : +/- 0.5°</div> <div>.XXX : +/- 0.010 XXX : +/- 0.05°</div> <div>ALL Ø'S FOR PEM HARDWARE</div> <div>+ .003 - .000</div>		<div>DRAWN:</div> <div>d.j.michno</div> <div>CHECKED:</div> <div>ENGR:</div> <div>APPROVED:</div> <div>DO NOT SCALE DRAWING</div>		<div>DATE:</div> <div>12/07/17</div>		<div>Rice HYDRO,INC.</div> <div>3500 ARROWHEAD DRIVE</div> <div>CARSON CITY, NEVADA 89706</div>					
						TITLE:		TM-11 TOP - EXPLODED VIEW					
Copyright 2017 Rice HYDRO INC.								SIZE:		DWG NUMBER:		REV:	
THIS IS CONFIDENTIAL AND PROPRIETARY INFORMATION THAT BELONGS TO Rice HYDRO INC. IT MAY NOT BEUSED OR REPRODUCED IN ANY MEDIA OR DISCLOSED WITHOUT THE PRIOR WRITTEN CONSENT OF OWNER.						MATERIAL:		B		TM-11 TOP Assy Exploded		B	
						FINISH:		SCALE:					
						SEE NOTES		1:4				SHEET: 1 OF 1	




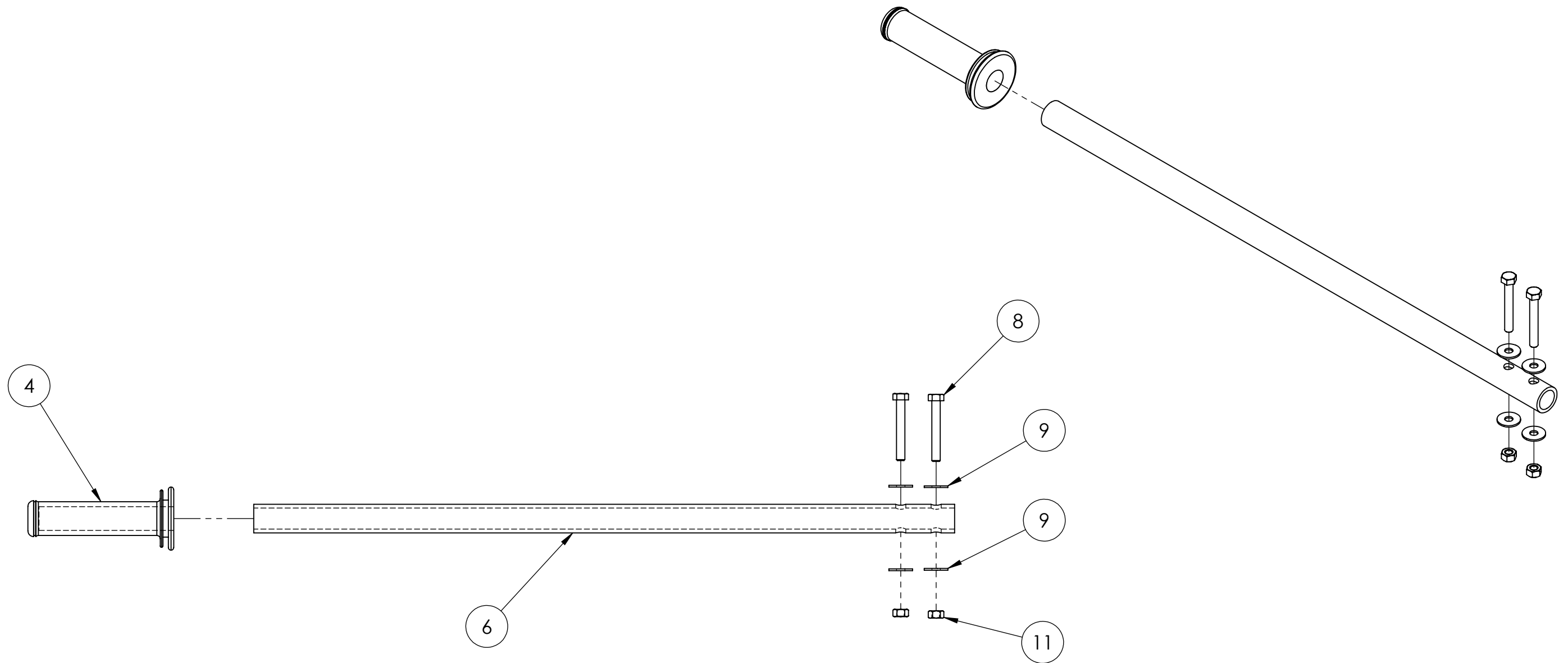
THIRD ANGLE PROJECTION 		(UNLESS OTHERWISE SPECIFIED) DIMENSIONS IN INCHES TOLERANCES: DECIMALS ANGLES .X : +/- 0.050 X : +/- 1.0° .XX : +/- 0.020 XX : +/- 0.5° .XXX : +/- 0.010 XXX : +/- 0.05° ALL Ø'S FOR PEM HARDWARE +.003 -.000		DRAWN: d.j.michno CHECKED: ENGR: APPROVED:	DATE: 11/17/2017	Rice HYDRO, INC. 3500 ARROWHEAD DRIVE CARSON CITY, NEVADA 89706	
CAD GENERATED DRAWING : DO NOT MANUALLY UPDATE		DO NOT SCALE DRAWING		TITLE: PHD-TM11-LOWER			
Copyright 2016 Rice HYDRO INC.		MATERIAL:		SIZE: B	DWG NUMBER: EXPLODED VIEW	REV: B	
THIS IS CONFIDENTIAL AND PROPRIETARY INFORMATION THAT BELONGS TO Rice HYDRO INC. IT MAY NOT BEUSED OR REPRODUCED IN ANY MEDIA OR DISCLOSED WITHOUT THE PRIOR WRITTEN CONSENT OF OWNER.		FINISH: SEE NOTES		SCALE: 1:4	SHEET: 1 OF 1		



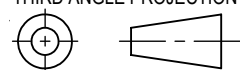
1.

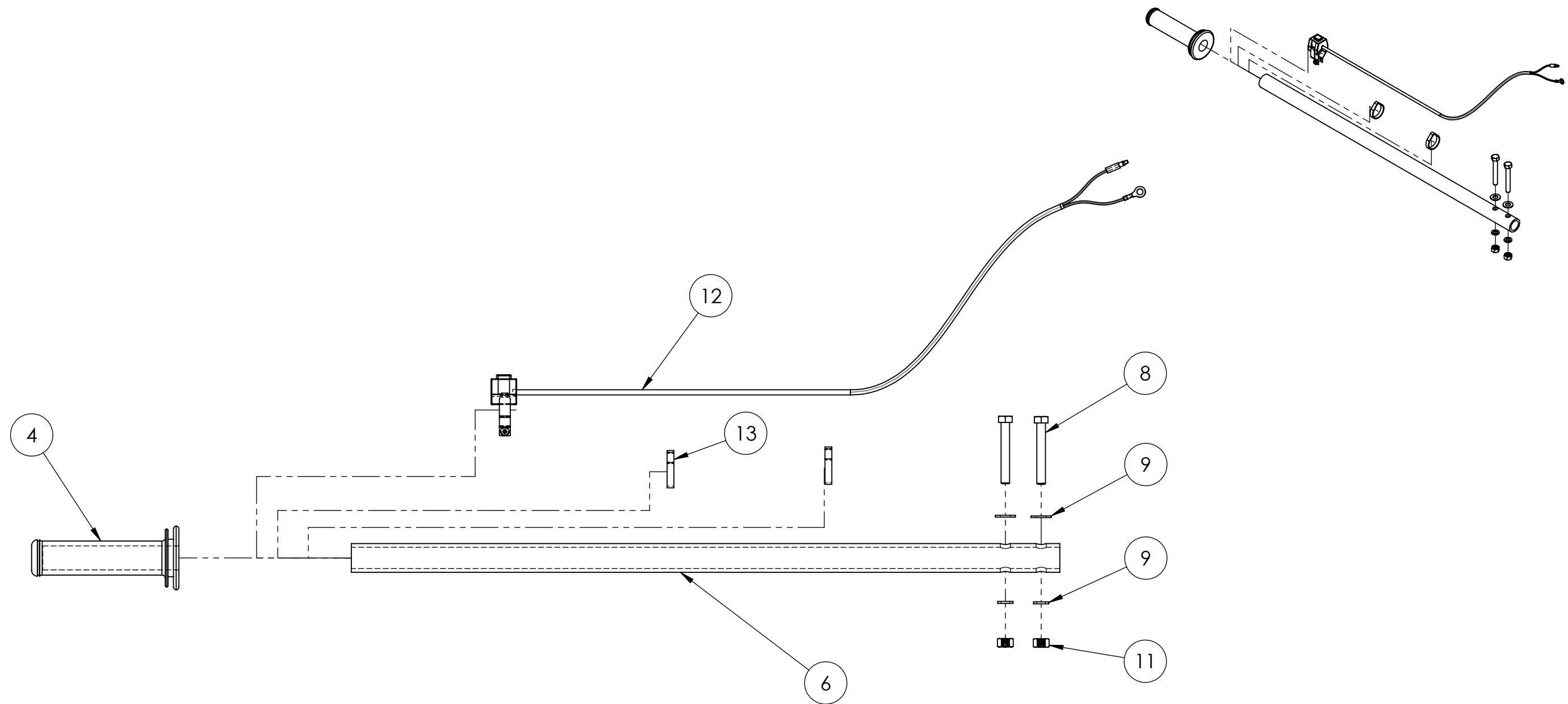
NOTES: (UNLESS OTHERWISE SPECIFIED)

<div>THIRD ANGLE PROJECTION</div> <div></div>		<div>(UNLESS OTHERWISE SPECIFIED)</div> <div>DIMENSIONS IN INCHES</div> <div>TOLERANCES:</div> <div>DECIMALS ANGLES</div> <div>.X : +/- 0.050 X : +/- 1.0°</div> <div>.XX : +/- 0.020 XX : +/- 0.5°</div> <div>.XXX : +/- 0.010 XXX : +/- 0.05°</div> <div>ALL Ø'S FOR PEM HARDWARE</div> <div>+ .003 - .000</div>		<div>DRAWN:</div> <div>d.j.michno</div> <div>CHECKED:</div> <div>ENGR:</div> <div>APPROVED:</div> <div>DO NOT SCALE DRAWING</div>		<div>DATE:</div> <div>12/07/17</div>		<div>Rice HYDRO,INC.</div> <div>3500 ARROWHEAD DRIVE</div> <div>CARSON CITY, NEVADA 89706</div>			
<div>CAD GENERATED</div> <div>DRAWING :</div> <div>DO NOT</div> <div>MANUALLY UPDATE</div>						TITLE:		<div>TM-11 TOP - EXPLODED VIEW</div>			
<div>Copyright 2017 Rice HYDRO INC.</div>											
<div>THIS IS CONFIDENTIAL AND PROPRIETARY INFORMATION THAT BELONGS TO Rice HYDRO INC. IT MAY NOT BEUSED OR REPRODUCED IN ANY MEDIA OR DISCLOSED WITHOUT THE PRIOR WRITTEN CONSENT OF OWNER.</div>				<div>MATERIAL:</div>		<div>SIZE:</div> <div>B</div>		<div>DWG NUMBER:</div> <div>TM-11 TOP Assy Exploded</div>		<div>REV:</div> <div>B</div>	
				<div>FINISH:</div> <div>SEE NOTES</div>		<div>SCALE:</div> <div>1:4</div>				<div>SHEET: 1 OF 1</div>	



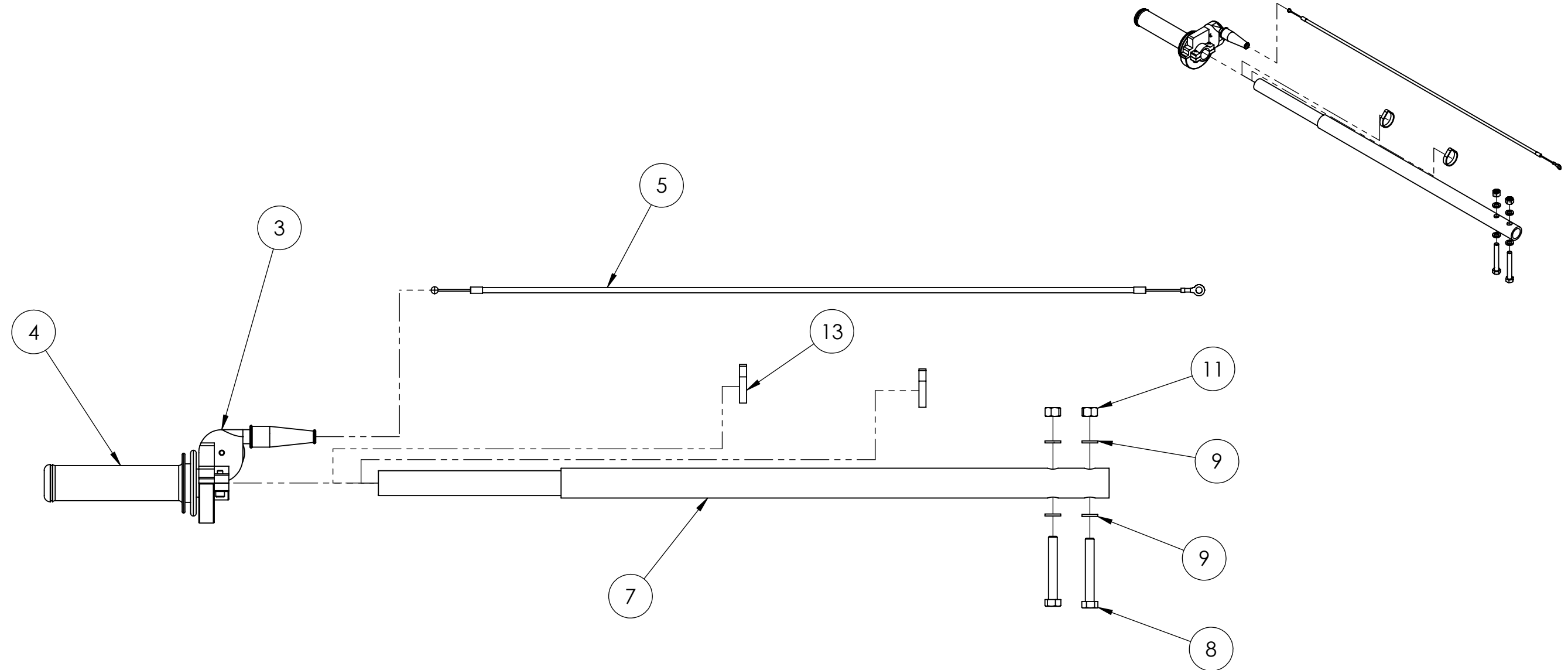
1.
NOTES: (UNLESS OTHERWISE SPECIFIED)

THIRD ANGLE PROJECTION 		(UNLESS OTHERWISE SPECIFIED) DIMENSIONS IN INCHES TOLERANCES: DECIMALS ANGLES .X : +/- 0.050 X : +/- 1.0° .XX : +/- 0.020 X.X : +/- 0.5° .XXX : +/- 0.010 X.XX : +/- 0.05° ALL Ø'S FOR PEM HARDWARE + .003 - .000		DRAWN: d.j.michno		DATE: 11/1/2018		<div>Rice HYDRO,INC.</div> <div>3500 ARROWHEAD DRIVE</div> <div>CARSON CITY, NEVADA 89706</div> <div>TITLE: TM-11 HANDLE ASSEMBLY ASSISTANT 1 PER UNIT</div>			
CAD GENERATED DRAWING : DO NOT MANUALLY UPDATE				CHECKED:							
				ENGR:							
				APPROVED:							
Copyright 2018 Rice HYDRO INC.				DO NOT SCALE DRAWING							
THIS IS CONFIDENTIAL AND PROPRIETARY INFORMATION THAT BELONGS TO Rice HYDRO INC. IT MAY NOT BEUSED OR REPRODUCED IN ANY MEDIA OR DISCLOSED WITHOUT THE PRIOR WRITTEN CONSENT OF OWNER.				MATERIAL: TBD		SIZE: B		DWG NUMBER: TM-11 Handle (Assistant) Assy		REV: A	
				FINISH: SEE NOTES		SCALE: 1:4				SHEET: 1 OF 1	



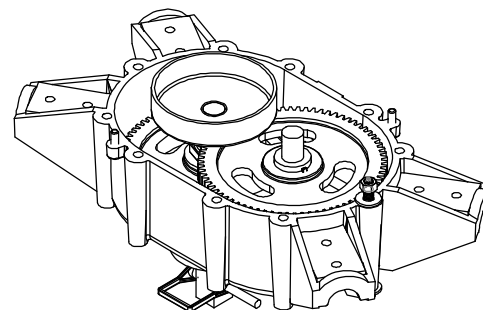
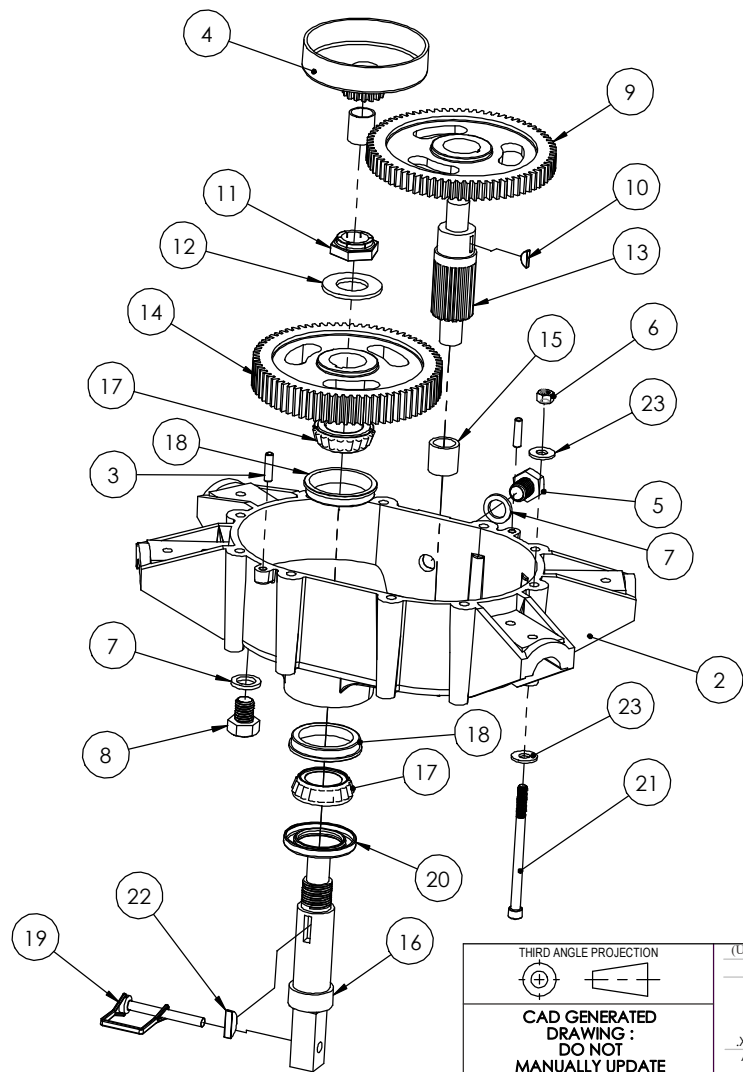
1.
NOTES: (UNLESS OTHERWISE SPECIFIED)

<div>THIRD ANGLE PROJECTION</div> <div></div>		<div>(UNLESS OTHERWISE SPECIFIED)</div> <div>DIMENSIONS IN INCHES</div> <div>TOLERANCES:</div> <div>DECIMALS ANGLES</div> <div>.X : +/- 0.050 X : +/- 1.0°</div> <div>.XX : +/- 0.020 X.X : +/- 0.5°</div> <div>.XXX : +/- 0.010 X.XX : +/- 0.05°</div> <div>ALL Ø'S FOR PEM HARDWARE</div> <div>+ .003 - .000</div>		<div>DRAWN:</div> <div>d.j.michno</div> <div>DATE:</div> <div>10/26/2018</div>		<div>Rice HYDRO,INC.</div> <div>3500 ARROWHEAD DRIVE</div> <div>CARSON CITY, NEVADA 89706</div>			
<div>CAD GENERATED</div> <div>DRAWING :</div> <div>DO NOT</div> <div>MANUALLY UPDATE</div>				<div>CHECKED:</div>		<div>TITLE:</div> <div>TM-11 KILL SWITCH HANDLE</div> <div>ASSEMBLY EXPLODED</div> <div>2/UNIT OPERATOR & ASST SIDES</div>			
				<div>ENGR:</div>					
				<div>APPROVED:</div>					
<div>Copyright 2018 Rice HYDRO INC.</div>				<div>DO NOT SCALE DRAWING</div>					
<div>THIS IS CONFIDENTIAL AND PROPRIETARY INFORMATION THAT</div> <div>BELONGS TO Rice HYDRO INC. IT MAY NOT BEUSED OR</div> <div>REPRODUCED IN ANY MEDIA OR DISCLOSED WITHOUT THE</div> <div>PRIOR WRITTEN CONSENT OF OWNER.</div>			<div>MATERIAL:</div> <div>TBD</div>		<div>SIZE:</div> <div>B</div>	<div>DWG NUMBER:</div> <div>TM-11 Kill Switch Handle Assy Exploded</div>		<div>REV:</div> <div>A</div>	
			<div>FINISH:</div> <div>SEE NOTES</div>		<div>SCALE:</div> <div>1:4</div>			<div>SHEET: 1 OF 1</div>	

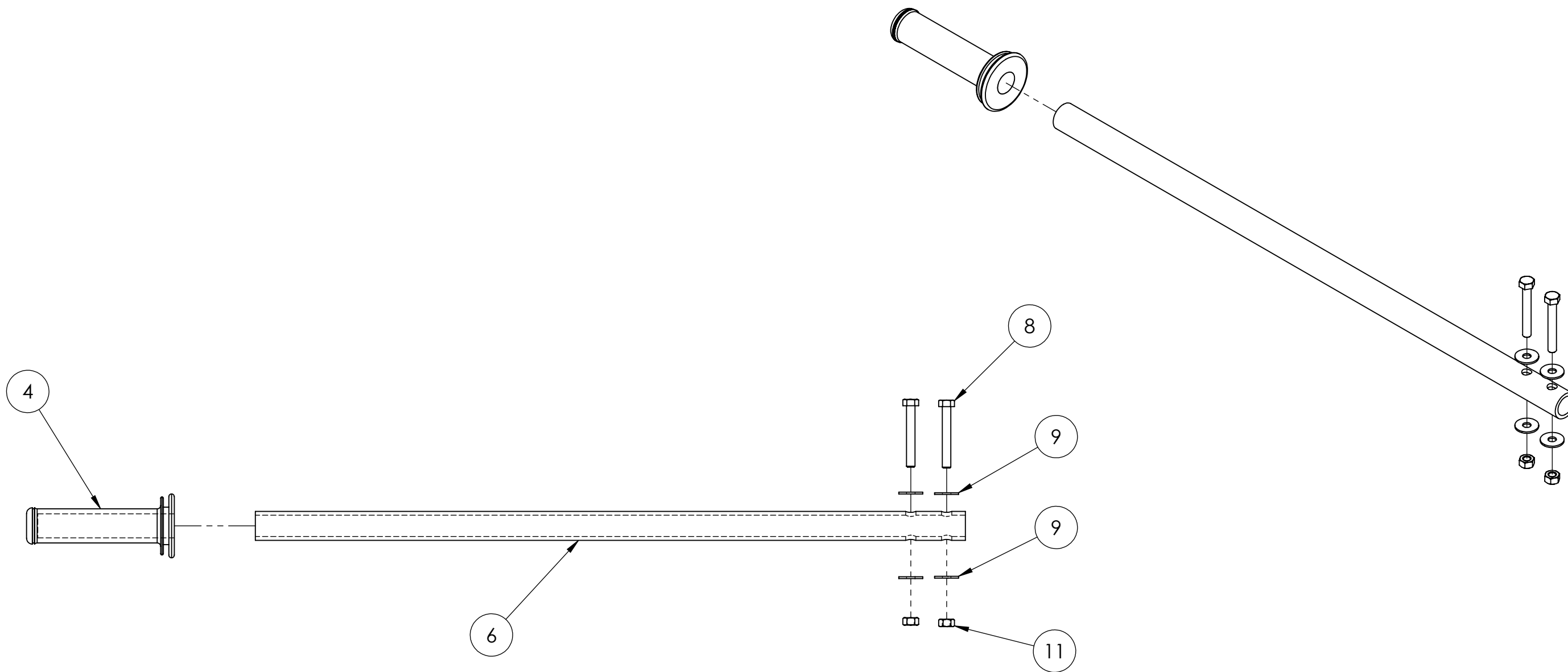


1.
NOTES: (UNLESS OTHERWISE SPECIFIED)

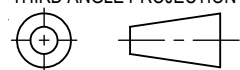
<div>THIRD ANGLE PROJECTION</div> <div></div>		<div>(UNLESS OTHERWISE SPECIFIED)</div> <div>DIMENSIONS IN INCHES</div> <div>TOLERANCES:</div> <div>DECIMALS ANGLES</div> <div>.X : +/- 0.050 X : +/- 1.0°</div> <div>.XX : +/- 0.020 X.X : +/- 0.5°</div> <div>.XXX : +/- 0.010 X.XX : +/- 0.05°</div> <div>ALL Ø'S FOR PEM HARDWARE</div> <div>+ .003 - .000</div>		<div>DRAWN:</div> <div>d.j.michno</div> <div>CHECKED:</div> <div></div> <div>ENGR:</div> <div></div> <div>APPROVED:</div> <div></div>		<div>DATE:</div> <div>10/26/2018</div>		<div>Rice HYDRO,INC.</div> <div>3500 ARROWHEAD DRIVE</div> <div>CARSON CITY, NEVADA 89706</div>			
<div>CAD GENERATED</div> <div>DRAWING :</div> <div>DO NOT</div> <div>MANUALLY UPDATE</div>								<div>TITLE:</div> <div>THROTTLE HANDLE ASSEMBLY</div> <div>TM-11 EXPLODED VIEW</div> <div>1 PER UNIT</div>			
<div>Copyright 2018 Rice HYDRO INC.</div>				<div>DO NOT SCALE DRAWING</div>							
<div>THIS IS CONFIDENTIAL AND PROPRIETARY INFORMATION THAT BELONGS TO Rice HYDRO INC. IT MAY NOT BEUSED OR REPRODUCED IN ANY MEDIA OR DISCLOSED WITHOUT THE PRIOR WRITTEN CONSENT OF OWNER.</div>				<div>MATERIAL:</div> <div>TBD</div>		<div>SIZE:</div> <div>B</div>		<div>DWG NUMBER:</div> <div>TM-11 Throttle Handle Assy Exploded</div>		<div>REV:</div> <div>A</div>	
				<div>FINISH:</div> <div>SEE NOTES</div>		<div>SCALE:</div> <div>1:4</div>				<div>SHEET: 1 OF 1</div>	

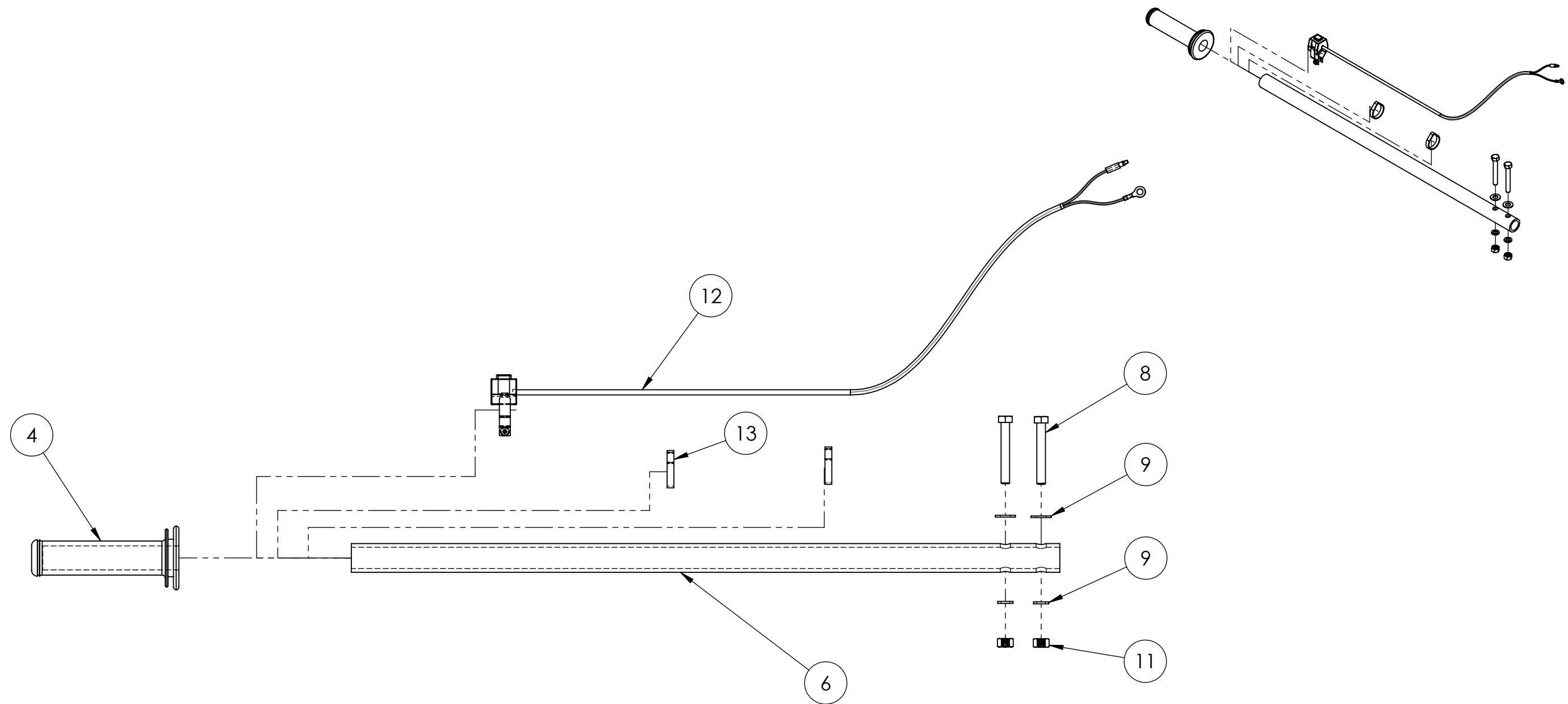


THIRD ANGLE PROJECTION 		(UNLESS OTHERWISE SPECIFIED) DIMENSIONS IN INCHES TOLERANCES: DECIMALS ANGLES .X : +/- 0.050 X : +/- 1.0° .XX : +/- 0.020 XX : +/- 0.5° .XXX : +/- 0.010 XXX : +/- 0.05° ALL Ø'S FOR PEM HARDWARE +.003 -.000		DRAWN: d.j.michno	DATE: 11/17/2017	Rice HYDRO, INC. 3500 ARROWHEAD DRIVE CARSON CITY, NEVADA 89706	
CAD GENERATED DRAWING : DO NOT MANUALLY UPDATE		CHECKED: ENGR: APPROVED:		TITLE: PHD-TM11-LOWER			
Copyright 2016 Rice HYDRO INC.		DO NOT SCALE DRAWING		REV: B			
THIS IS CONFIDENTIAL AND PROPRIETARY INFORMATION THAT BELONGS TO Rice HYDRO INC. IT MAY NOT BE USED OR REPRODUCED IN ANY MEDIA OR DISCLOSED WITHOUT THE PRIOR WRITTEN CONSENT OF OWNER.		MATERIAL: FINISH: SEE NOTES		SIZE: B SCALE: 1:4	DWG NUMBER: EXPLODED VIEW	SHEET: 1 OF 1	



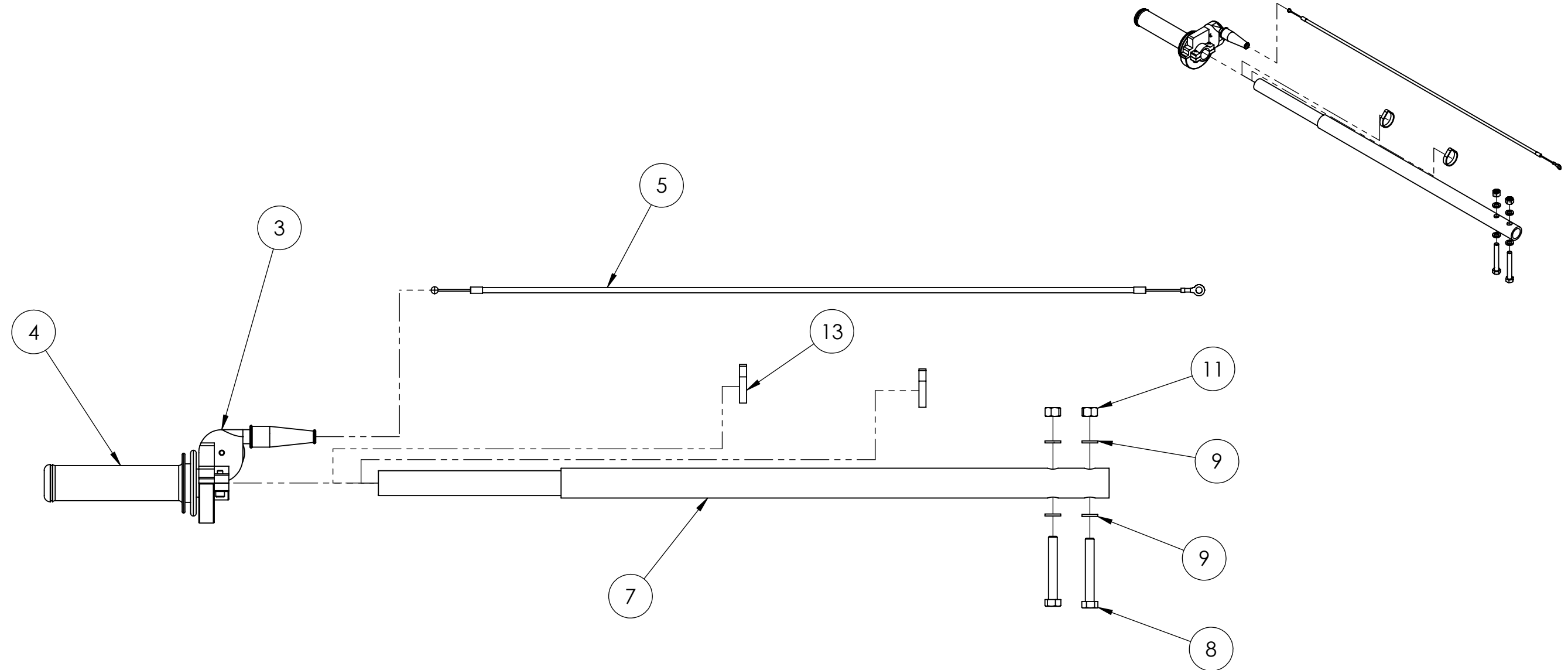
1.
NOTES: (UNLESS OTHERWISE SPECIFIED)

<div>THIRD ANGLE PROJECTION</div> <div></div>		<div>(UNLESS OTHERWISE SPECIFIED)</div> <div>DIMENSIONS IN INCHES</div> <div>TOLERANCES:</div> <div>DECIMALS ANGLES</div> <div>.X : +/- 0.050 X : +/- 1.0°</div> <div>.XX : +/- 0.020 X.X : +/- 0.5°</div> <div>.XXX : +/- 0.010 X.XX : +/- 0.05°</div> <div>ALL Ø'S FOR PEM HARDWARE</div> <div>+ .003 - .000</div>		<div>DRAWN:</div> <div>d.j.michno</div> <div>CHECKED:</div> <div></div> <div>ENGR:</div> <div></div> <div>APPROVED:</div> <div></div>		<div>DATE:</div> <div>11/1/2018</div>		<div>Rice HYDRO,INC.</div> <div>3500 ARROWHEAD DRIVE</div> <div>CARSON CITY, NEVADA 89706</div>			
<div>CAD GENERATED</div> <div>DRAWING :</div> <div>DO NOT</div> <div>MANUALLY UPDATE</div>						<div>TITLE:</div> <div>TM-11 HANDLE ASSEMBLY</div> <div>ASSISTANT</div> <div>1 PER UNIT</div>					
<div>Copyright 2018 Rice HYDRO INC.</div>				<div>DO NOT SCALE DRAWING</div>							
<div>THIS IS CONFIDENTIAL AND PROPRIETARY INFORMATION THAT</div> <div>BELONGS TO Rice HYDRO INC. IT MAY NOT BEUSED OR</div> <div>REPRODUCED IN ANY MEDIA OR DISCLOSED WITHOUT THE</div> <div>PRIOR WRITTEN CONSENT OF OWNER.</div>				<div>MATERIAL:</div> <div>TBD</div>		<div>SIZE:</div> <div>B</div>		<div>DWG NUMBER:</div> <div>TM-11 Handle (Assistant) Assy</div>		<div>REV:</div> <div>A</div>	
				<div>FINISH:</div> <div>SEE NOTES</div>		<div>SCALE:</div> <div>1:4</div>				<div>SHEET: 1 OF 1</div>	



1.
NOTES: (UNLESS OTHERWISE SPECIFIED)

<div>THIRD ANGLE PROJECTION</div> <div></div>		<div>(UNLESS OTHERWISE SPECIFIED)</div> <div>DIMENSIONS IN INCHES</div> <div>TOLERANCES:</div> <div>DECIMALS ANGLES</div> <div>.X : +/- 0.050 X : +/- 1.0°</div> <div>.XX : +/- 0.020 X.X : +/- 0.5°</div> <div>.XXX : +/- 0.010 X.XX : +/- 0.05°</div> <div>ALL Ø'S FOR PEM HARDWARE</div> <div>+ .003 - .000</div>		<div>DRAWN:</div> <div>d.j.michno</div> <div>CHECKED:</div> <div></div> <div>ENGR:</div> <div></div> <div>APPROVED:</div> <div></div>		<div>DATE:</div> <div>10/26/2018</div>		<div>Rice HYDRO,INC.</div> <div>3500 ARROWHEAD DRIVE</div> <div>CARSON CITY, NEVADA 89706</div>			
<div>CAD GENERATED</div> <div>DRAWING :</div> <div>DO NOT</div> <div>MANUALLY UPDATE</div>						TITLE:		<div>TM-11 KILL SWITCH HANDLE</div> <div>ASSEMBLY EXPLODED</div> <div>2/UNIT OPERATOR & ASST SIDES</div>			
<div>Copyright 2018 Rice HYDRO INC.</div>						<div>DO NOT SCALE DRAWING</div>					
<div>THIS IS CONFIDENTIAL AND PROPRIETARY INFORMATION THAT</div> <div>BELONGS TO Rice HYDRO INC. IT MAY NOT BEUSED OR</div> <div>REPRODUCED IN ANY MEDIA OR DISCLOSED WITHOUT THE</div> <div>PRIOR WRITTEN CONSENT OF OWNER.</div>			<div>MATERIAL:</div> <div>TBD</div>		<div>SIZE:</div> <div>B</div>		<div>DWG NUMBER:</div> <div>TM-11 Kill Switch Handle Assy Exploded</div>		<div>REV:</div> <div>A</div>		
			<div>FINISH:</div> <div>SEE NOTES</div>		<div>SCALE:</div> <div>1:4</div>		<div>SHEET: 1 OF 1</div>				



1.
NOTES: (UNLESS OTHERWISE SPECIFIED)

THIRD ANGLE PROJECTION 		(UNLESS OTHERWISE SPECIFIED) DIMENSIONS IN INCHES TOLERANCES: DECIMALS ANGLES .X : +/- 0.050 X : +/- 1.0° .XX : +/- 0.020 X.X : +/- 0.5° .XXX : +/- 0.010 X.XX : +/- 0.05° ALL Ø'S FOR PEM HARDWARE + .003 - .000		DRAWN: d.j.michno	DATE: 10/26/2018	Rice HYDRO,INC. 3500 ARROWHEAD DRIVE CARSON CITY, NEVADA 89706 TITLE: THROTTLE HANDLE ASSEMBLY TM-11 EXPLODED VIEW 1 PER UNIT		
CAD GENERATED DRAWING : DO NOT MANUALLY UPDATE		DO NOT SCALE DRAWING		CHECKED:				
Copyright 2018 Rice HYDRO INC.				ENGR:				
THIS IS CONFIDENTIAL AND PROPRIETARY INFORMATION THAT BELONGS TO Rice HYDRO INC. IT MAY NOT BEUSED OR REPRODUCED IN ANY MEDIA OR DISCLOSED WITHOUT THE PRIOR WRITTEN CONSENT OF OWNER.		MATERIAL: TBD		SIZE: B		DWG NUMBER: TM-11 Throttle Handle Assy Exploded	REV: A	SHEET: 1 OF 1
		FINISH: SEE NOTES		SCALE: 1:4				