

RICE HYDRO, INC.
MANUFACTURER'S OPERATING INSTRUCTIONS
POST HOLE DIGGER - Dirdawg Standard & Torque Series

FOR WARRANTY REGISTRATION CALL: 1-800-245-4777

WARNING & SAFETY:

1. During operation - Do not wear loose fitting, or frayed clothing that may become entangled in rotating auger bit or other moving parts.
2. Always keep hands, arms, feet, and legs clear of rotating auger bit.
3. Do not operate machine on grade level greater than 15 degrees.
4. Engine should always be turned off when changing auger bits.
5. Remove auger bit before towing unit.
6. During extended use, some components may become hot, DO NOT TOUCH.
7. CAUTION BEFORE DIGGING - ALWAYS check with local utility companies to determine/verify location of existing cables, lines, or piping.
Call 811 before you dig!

ORIGINAL SETUP and HYDRAULIC OIL CHANGE:

1. Your RICE Hydro dirdawg comes completely assembled and ready to operate, all you need to do is add fluids and connect required size of auger bit.
2. Fill engine with gas and oil, as measured by engine dipstick.
3. **Filling system with hydraulic oil, for maximum performance and extended product life hydraulic oil #AW68 is recommended. First fill - open black breather cap and fill fluid to red dot on tank sight glass. Start unit and allow fluid to fill through system pump and hoses. Second fill - add more hydraulic fluid filling back to red dot on tank sight glass. For maintenance or to add/replace hydraulic fluid, a drain plug is located on inside bottom of tank for easy access.**
Dirdawg standard series requires about 2.5 gallons of fluid, the torque series will hold just under 5 gallons of fluid.

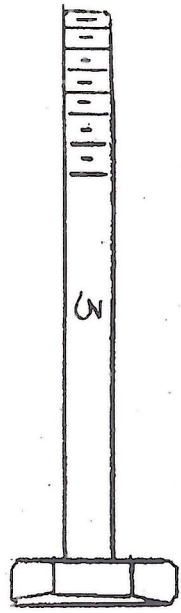
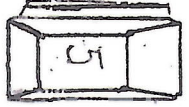
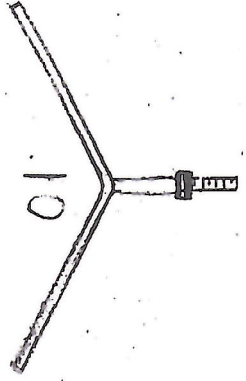
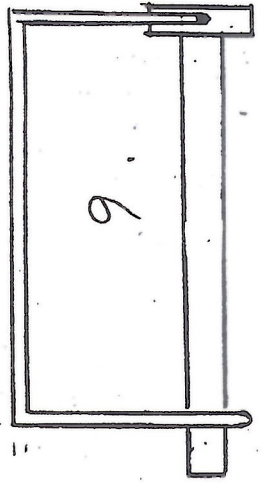
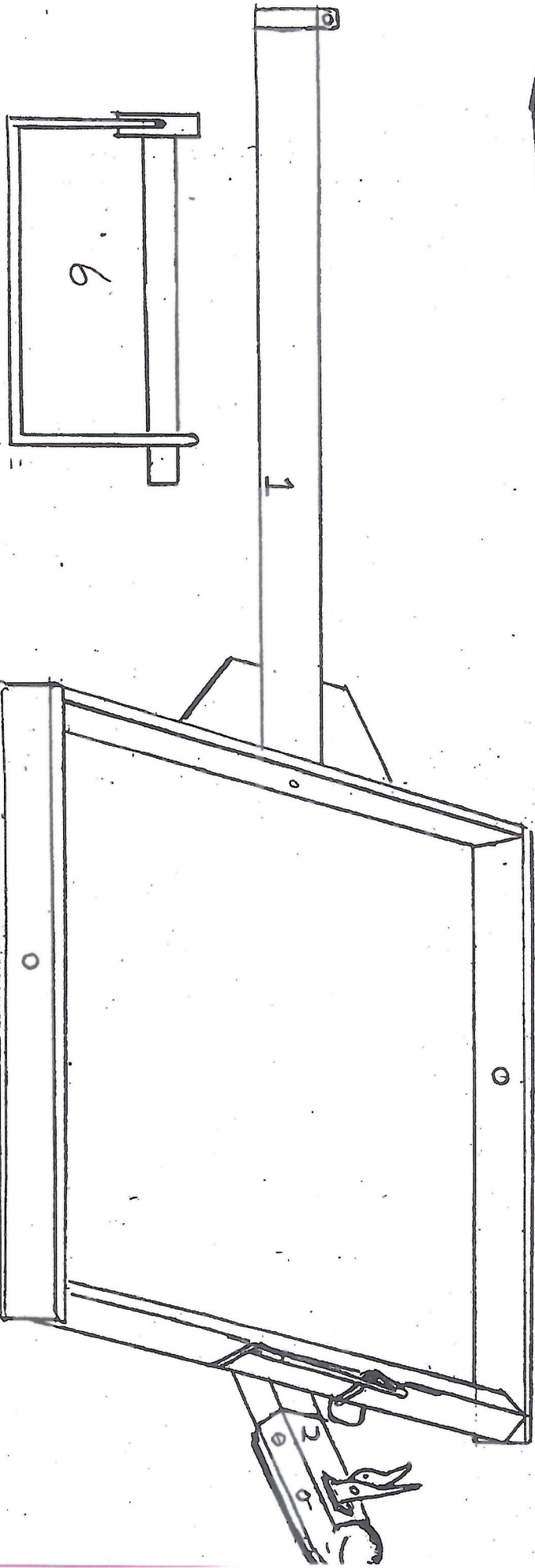
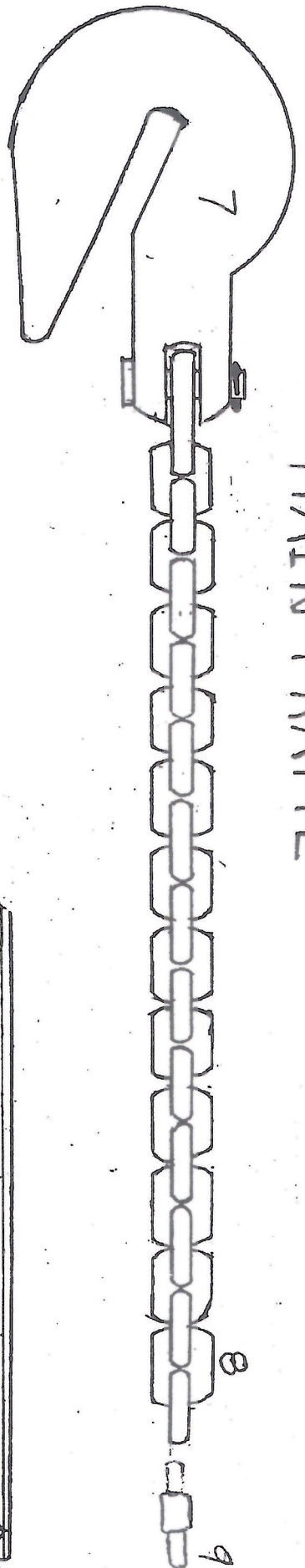
OPERATING INSTRUCTIONS DIGGING MODE:

1. Loosen the locking handle and pull out digging handle to stop. DO NOT OVER EXTEND. Retighten locking handle. DO NOT OVERTIGHTEN.
2. Connect auger bit drive adapter to hydraulic motor shaft with a minimum 3/8" Grade 8 bolt and locknut.
3. Connect desired size auger bit or extension and secure with locking pin.
4. Assuring all fluids have been checked and refilled. Start engine.
5. For forward or digging rotation squeeze right side of control handle in, to reverse or for removal rotation squeeze left side of control handle.
6. Periodically lift auger up and out of hole to aid in dirt removal.

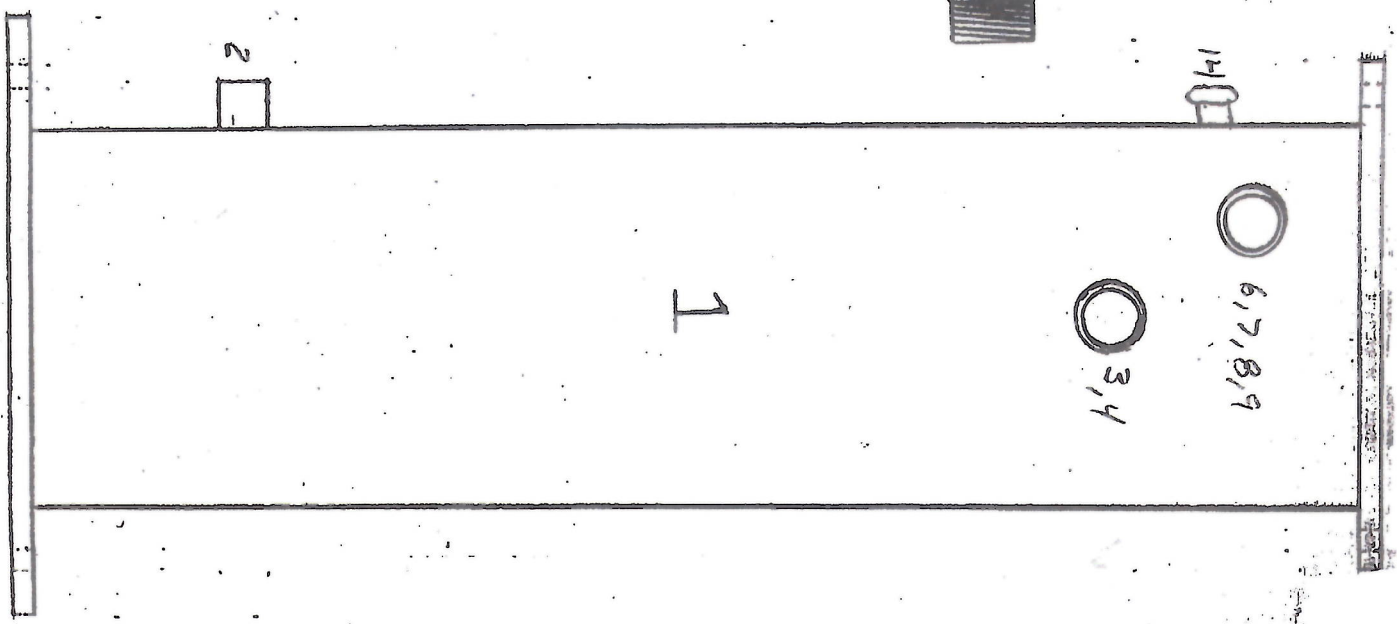
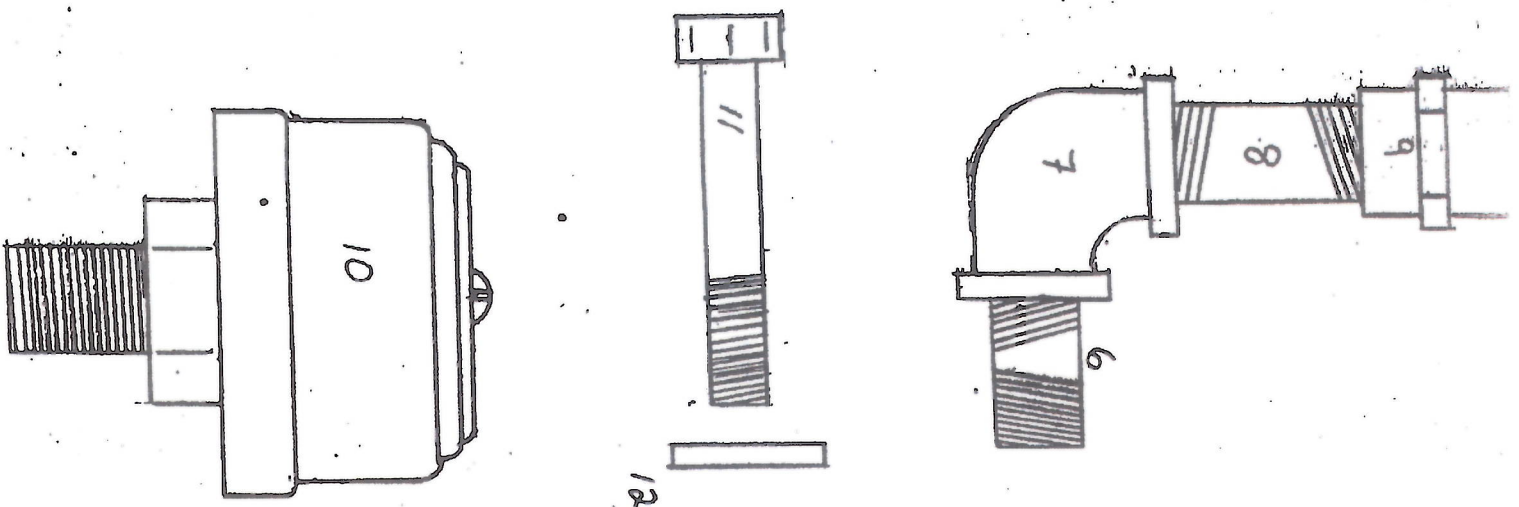
GENERAL MAINTENANCE:

1. Engine: Check all fluids before each use. SAE 10w30 is recommended. Oil level should be filled to meet dipstick measurement. For maintenance change oil within the 1st month, or after the first 20 hours of use, and every 6 months or 100 hours of use, thereafter.
2. Hydraulic Pump, Motor, and Valve are totally enclosed, NO MAINTENANCE.
3. Hydraulic filter: a 10 micron with spin on head, replacement numbers are Napa Gold #1453 or Frahm #P1655. Replace filter after the first 50 hours of use and every 250 hours, thereafter.
4. Hydraulic Fluid: replace every 6 months, filling instructions above.

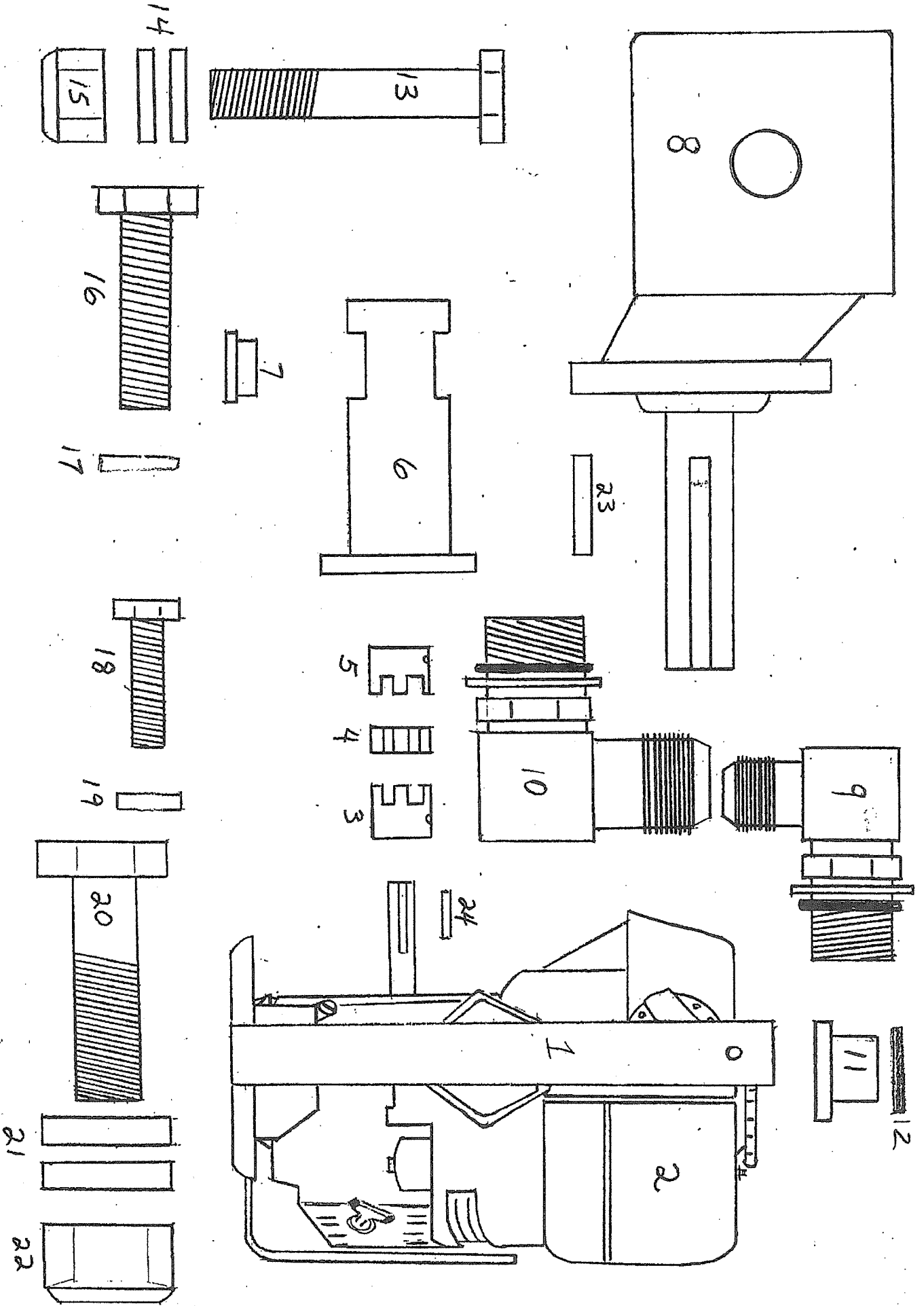
MAIN FRAME



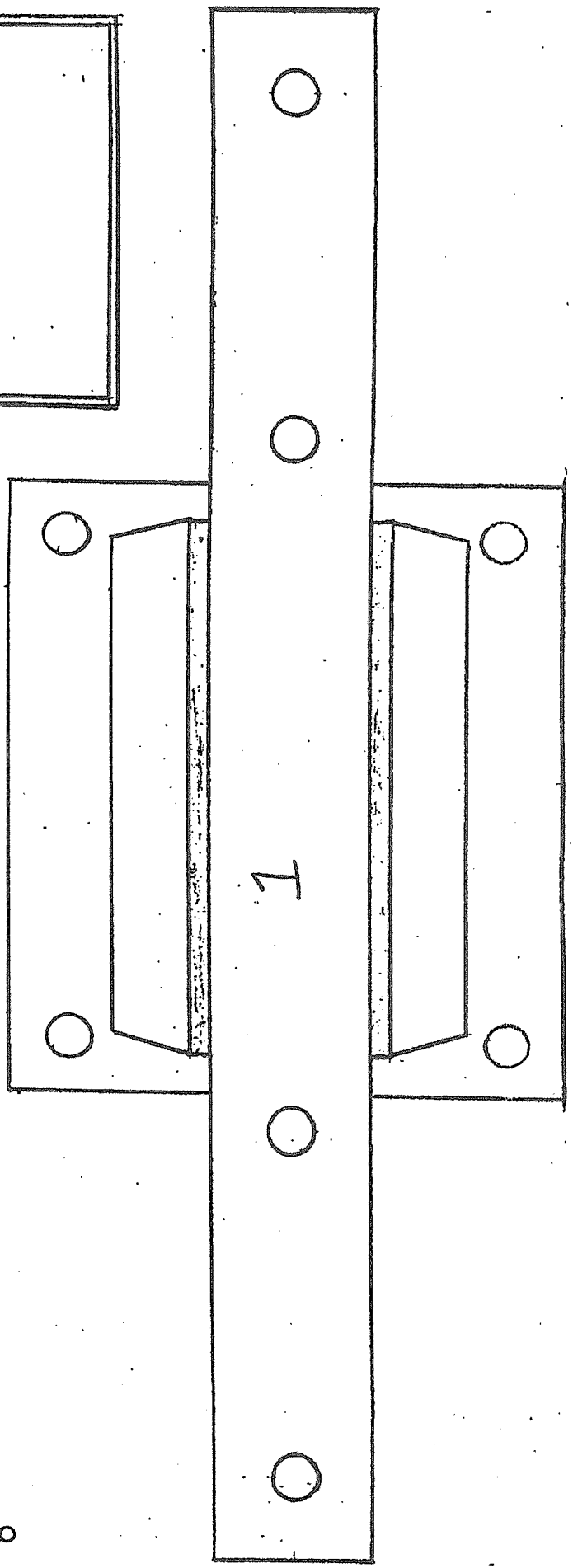
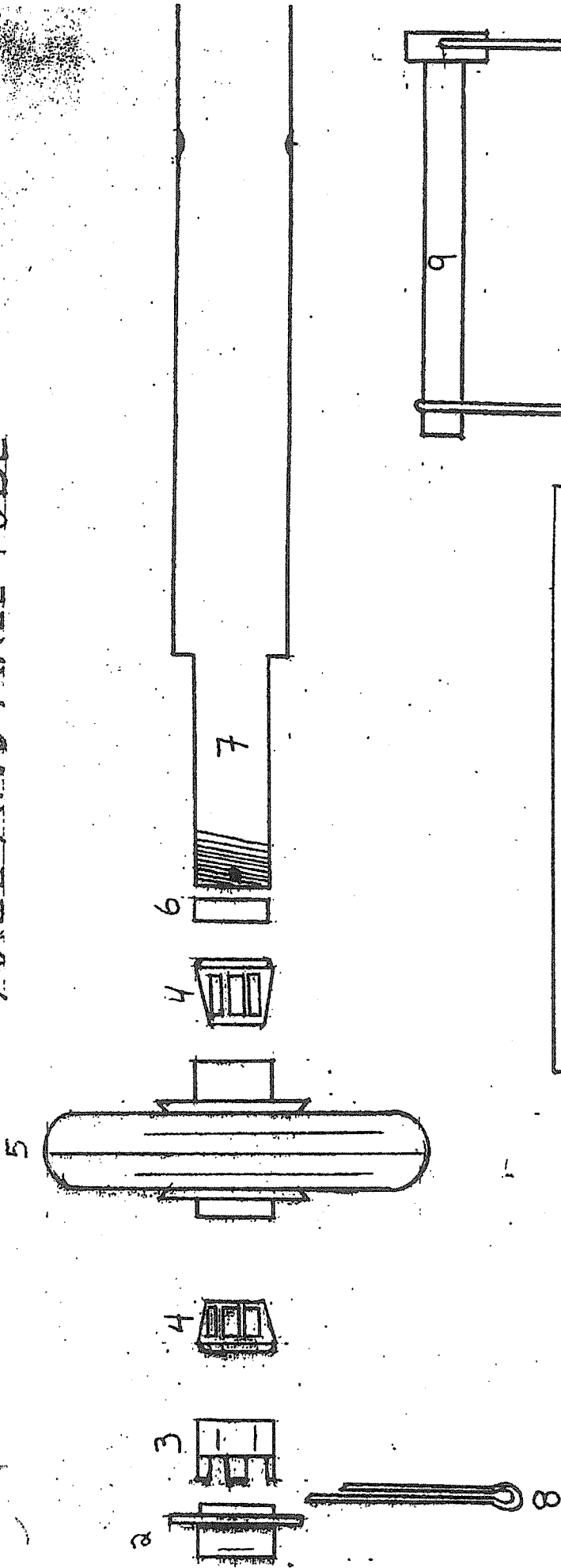
TANK



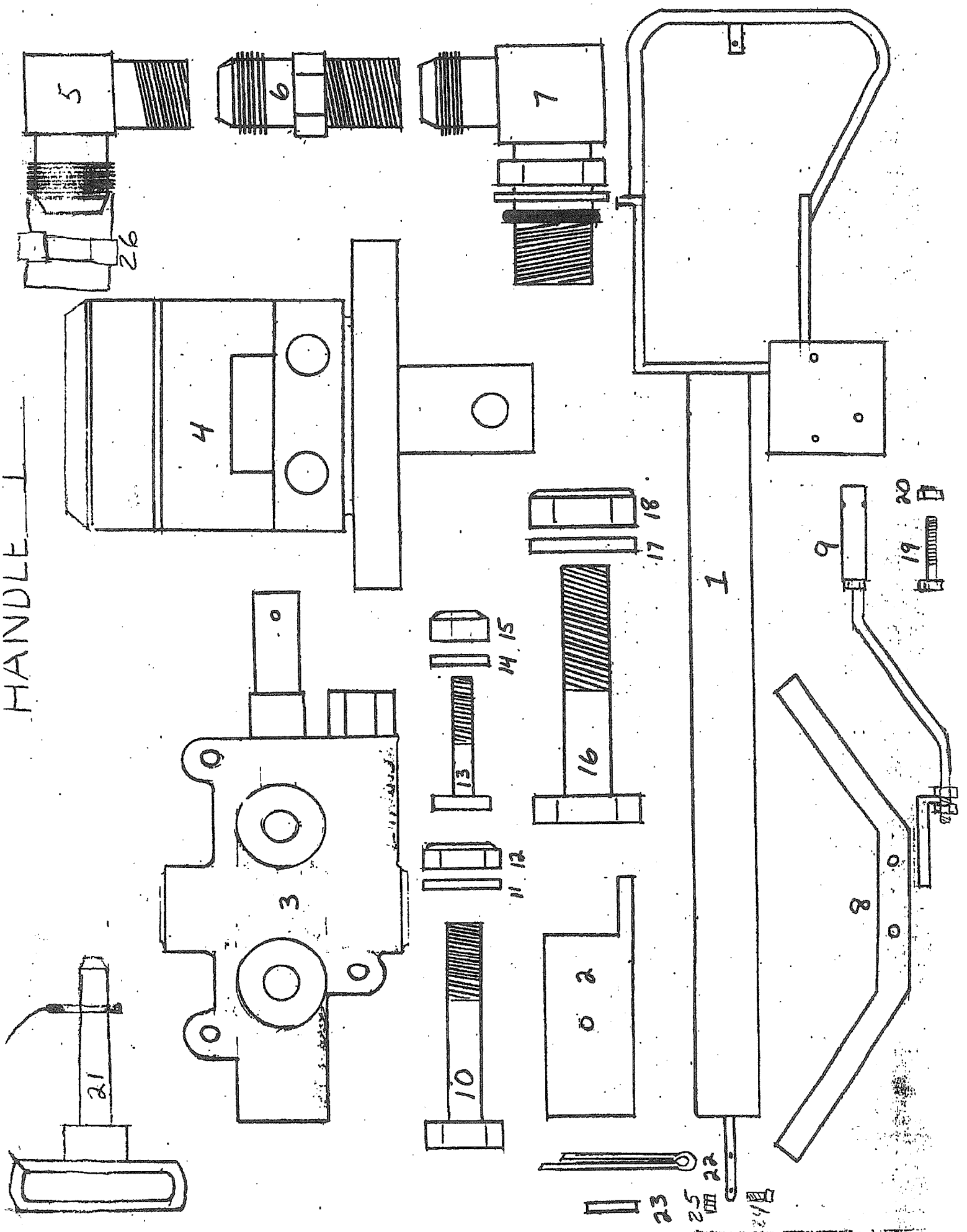
ENGINE CRADLE AND PUMP



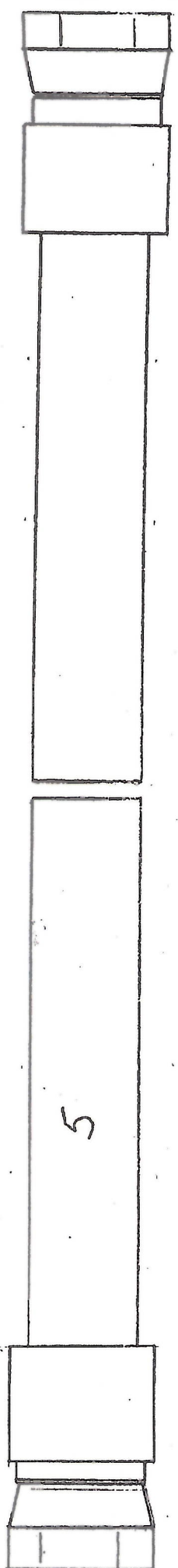
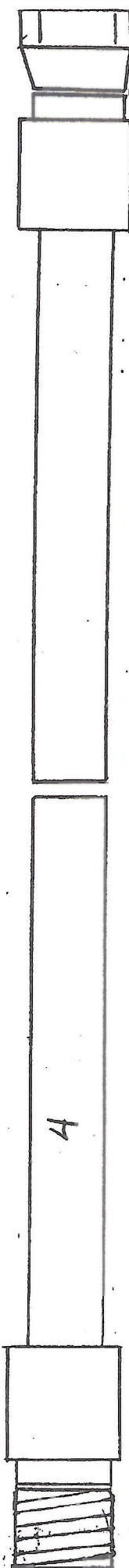
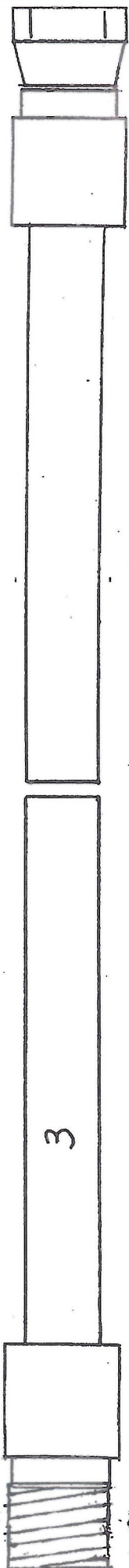
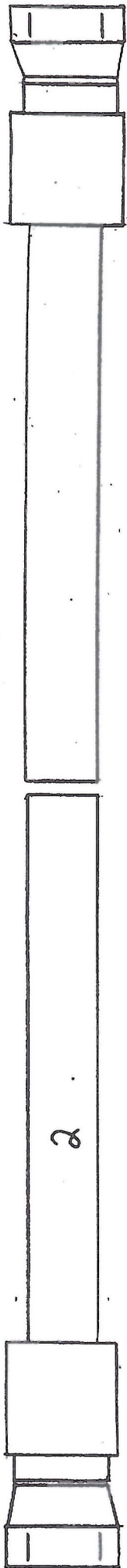
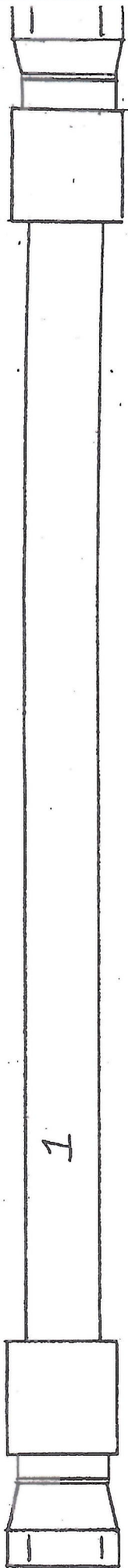
AXLE AND AXLE TUBE



HANDLE I



HOSES



PARTS BREAKDOWN MODEL DIRTDWG TORQUE SERIES
RICE HYDRO INC.

MAIN FRAME SECTION:

REF#..	PART NUMBER..	DESCRIPTION..	QTY
1	RH-AGR-MAIN-FRAME	WELD/COATED MAIN FRAME ASSEMBLY	1
N/A	LABEL-CAUTION-AUGER	FLUID FILL / CAUTIONS	1
N/A	LABEL-OVERTIGHTEN	DO NOT OVERTIGHTEN Y-HANDLE	1
N/A	LABEL-TOWINSTR-AUGER	TOWING INSTRUCTIONS	1
N/A	LABEL-USA-FLAG	AMERICAN FLAG	1
N/A	LOGO	RICE COMPANY INFORMATION	1
2	HITCH-COUPLER-2"	TOWING HITCH FOR 2" BALL	1
3	BOLT-1/2X13X4-GR8	BOLT TO CONNECT HITCH COUPLER	2
4	FLATWASHER-1/2-GR8	WASHERS FOR HITCH COUPLER	4
5	LOCKNUT-1/2X13-GR8	LOCKNUTS FOR HITCH COUPLER	2
6	HITCHPIN-5/16X2&3/4	SAFETY PIN FOR AXLES, HITCH, BIT	1
7	HOOKS-CLEVIS-5/16	CHAIN HOOK	1
8	CHAIN-AUGER-5/16X30	30" 5/16 CHAIN FOR AUGER TOW HITCH	30
9	QUICK-LINK	QUICK LINK FOR 5/16" CHAIN	1
10	RH-LOCKING-HANDLE	PINCH CLAMP ON MAIN FRAME	1

TANK SECTION:

REF#..	PART NUMBER..	DESCRIPTION..	QTY
1	RH-AGR-TANK-ASSY-T	FLUID RESERVOIR W/COUPLINGS	1
	DRAIN-PLUG-AUGER	DRAIN PLUG AUGER TANK	1
2	3/4MNPT X 3/4MJICX90	FITTING SUCTION HOSE AT TANK	1
3	FILTER-HYCON-AUGER	HYDRAULIC FILTER RETURN TO TANK	1
4	NIP-G-3/4X3&1/2	NIPPLE FROM FILTER TO TANK COUPLING	1
5	1/2MJIC X 3/4MNPTX90	FITTING RETURN VALVE TO FILTER/TANK	1
6	NIP-G-3/4X1&1/2	NIPPLE FROM TANK TO BREATHER CAP	1
7	EL-G-3/4X90	ELBOW FROM TANK TO BREATHER CAP	1
8	NIP-G-3/4X3	NIPPLE FROM TANK TO BREATHER CAP	1
9	COUPLING-BRASS-3/4	COUPLING FROM TANK TO BREATHER CAP	1
10	BREATHER-CAP	HYDRAULIC FLUID BREATHER & FILL	1
11	BOLT-3/8X16X1&1/4GR8	BOLT FOR TANK TO MAIN FRAME & AXLE	8
12	FLATWASHER-3/8-GR8	WASHER FOR TANK BOLTS	16
13	LOCKNUT-3/8X16-GR8	LOCKNUTS FOR TANK BOLTS	8
14	SIGHT-GLASS-DD	FLUID SIGHT GLASS SIDE OF TANK	1
N/A	LABEL-LOGO-AUGER	RICE VERTICAL NAME ON TANK	2

ENGINE CRADLE AND PUMP SECTION:

REF#..	PART NUMBER..	DESCRIPTION..	QTY
1	RH-AGR-ENGINE-CRADLE	WELDED ASSEMBLY FOR PUMP AND ENGINE	1
2	HONDA-GX270QA2	9 HP HONDA ENGINE W/OIL ALERT	1
3	COUPLING-LVJ-ENG-1"	ENGINE SHAFT SIDE	1
4	CENTERDISK-LVJ-AUGER	BUNA SPIDER DISK FOR COUPLINGS	1
5	COUPLING-LVJ-PMP-1/2	PUMP SHAFT SIDE	1
6	HYD-PUMP-MOUNT BF3	PUMP MOUNT TO ENGINE 2 BOLT PATTERN	1
7	HYD-PUMP-MOUNT-COVER	ORANGE SAFETY COVER FOR SHAFT	1
8	HYDRAULIC-PUMP-T	FLUID PUMP TORQUE UNITS	1
9	1/2MJIC X 1/2MOR X90	FITTING PUMP TO VALVE 72" HOSE SIDE	1
10	3/4MJIC X 5/8MOR X90	FITTING PUMP TO TANK SUCTION HOSE	1
11	AUGER-FL-SLV-BEARING	SLEAVE BEARING BOLT HOLE ON CRADLE	2
12	WASHER-LEATHER-5/8"	WASHER BETWEEN CRADLE AND FRAME	2
13	BOLT-5/16X18X1&3/4	MOUNTING BOLTS FOR ENGINE	4
14	FLATWASHER-5/16-GR8	WASHER FOR BOLTS ENGINE MOUNTING	8
15	LOCKNUT-5/16X18	LOCKNUTS ENGINE MOUNTING	4
16	BOLT-3/8X16X1&1/4GR8	BOLT FOR PUMP MOUNT TO ENGINE	4
17	FLATWASHER-3/8-GR8	WASHER BOLT PUMP MOUNT TO ENGINE	4
18	BOLT-5/16X18X1-GR8	BOLT HYD PUMP TO MOUNT	2
19	FLATWASHER-5/16-GR8	WASHERS FOR BOLTS PUMP TO MOUNT	2
20	BOLT-1/2X13X1&3/4GR8	BOLT ENGINE CRADLE TO FRAME	2
21	FLATWASHER-1/2-GR8	WASHER FROM ENGINE CRADLE TO FRAME	4
22	LOCKNUT-1/2X13-GR8	NUTS FOR BOLTS FROM CRADLE TO FRAME	2

PARTS BREAKDOWN MODEL DIRTDAGW TORQUE SERIES
RICE HYDRO INC.

AXLE ASSEMBLY SECTION:

REF#..	PART NUMBER..	DESCRIPTION..	QTY
1	AXLE-PLATE-ASSY	WELDED PLATE AND TUBES	1
2	HUB-ASSY-MANUAL-PROP	WHEEL HUB	2
3	NUT-CASTLE-1"-12SLOT	CASTLE NUT FOR WHEEL HUB	2
4	BEARING	KIT #2 WHEEL BEARINGS W/SEALS #6	2
5	WHEEL-18.5"-4PLY	HIGHWAY RATED TIRES FOR DIRTDAGW	2
6		SEALS INCLUDED WITH BEARING KIT	
7	AXLE-DIRTDAGW-1&1/4	MACHINE THREADED STEEL AXLES	2
8	COTTERPIN-1/8X1&3/4	STEEL COTTER PIN FOR CASTEL NUT	2
9	HITCHPIN-5/16X2&3/4	SAFETY PIN FOR AXLES, HITCH, BIT	2
N/A	BEARING-SUPPLIES	SEE HYDRAULIC BEARINGS W/SEA	2

HANDLE SECTION:

REF#..	PART NUMBER..	DESCRIPTION..	QTY
1	RH-AGR-HANDLE-ASSY	COMPLETE HANDLE SECTION	1
2	RH-AGR-MTR-PLT	COMPLETE MOTOR PLATE	1
3	HYD-VALVE-T	FLUID VALVE FOR TORQUE DIRTDAGWS	1
4	HYD-MOTOR-T	HYDRAULIC DRIVE MOTOR	1
5	1/2MNPTX1/2MNPTX90	VALVE INLET AND OUTLET FITTING	2
6	1/2MNPT X 1/2MJIC	VALVE TO MOTOR	2
7	1/2MJIC X 1/2MOR X90	PUMP TO VALVE	2
8	CONTROL-HANDLE	FORWARD AND REVERSE CONTROLS	1
9	CONTROL-ROD	CONNECTS CONTROL HANDLE TO VALVE	1
10	BOLT-5/16X18X1&3/4	BOLT TO MOUNT VALVE TO PLATE	3
11	FLATWASHER-5/16-GR8	WASHERS FOR BOLTS MOUNTING VALVE	3
12	LOCKNUT-5/16-GR8	NUTS FOR MOUNTING VALVE TO PLATE	3
13	BOLT-1/4X20X1&1/4GR8	CONTROL ROD TO CONTROL HANDLE	2
14	FLATWASHER-1/4	WASHER FOR BOLT CONTROL ROD	2
15	LOCKNUT-1/4X20-GR8	NUT FOR CONTROL ROD	2
16	BOLT-1/2X13X1&3/4GR8	MOUNTING MOTOR TO MOTOR PLATE	2
17	FLATWASHER-1/2-GR8	WASHERS FOR BOLTS MOUNTING MOTOR	2
18	LOCKNUT-1/2X13-GR8	NUT FOR MOUNTING MOTOR	2
19	BOLT-10-24X1&1/4HEX	CONNECTS CONTROL TO VALVE	1
20	LOCKNUT-10X24	NUT FOR BOLT ROD TO VALVE	1
21	HITCHPIN-1/2X3&5/8	LOCKING PIN RED MOTOR PLATE	1
22	COTTERPIN-1/8X1&3/4	INTERNAL PIN IN HANDLE ASSY	1
23	FLATWASHER-3/8-GR8	HANDLE ASSY INTERNAL ROD CAPTURE	2
24	BOLT-10/32X3/4"	HOLDS CAPTURE ROD HANDLE ASSY	1
25	LOCKNUT-10X24	NUT FOR BOLT ON CAPTURE	1
26	COUPLING-BRASS-1/2	HOSE TO VALVE FOR QC ADDITION	2
N/A	LABEL-OPRINSTR-AUGER	BASIC OPERATING INSTRUCTIONS MOTOR	1

HOSE ASSEMBLY SECTION:

REF#..	PART NUMBER..	DESCRIPTION..	QTY
1	<u>HOSE VALVE TO MOTOR</u>		
	HOSE-1/2-2500XFT	HYDRAULIC PRESSURE HOSE BY FOOT	2.8
	FITTING-1/2FJIC	FEMALE JIC VALVE TO MOTOR	1
	FITTING-1/2FJIC	FEMALE JIC VALVE TO MOTOR	1
2	<u>HOSE VALVE TO MOTOR</u>		
	HOSE-1/2-2500XFT	HYDRAULIC PRESSURE HOSE BY FOOT	3
	FITTING-1/2FJIC	FEMALE JIC VALVE TO MOTOR	1
	FITTING-1/2FJIC	FEMALE JIC VALVE TO MOTOR	1
3	<u>HOSE RETURN TO TANK</u>		
	HOSE-1/2-2500XFT	HYDRAULIC PRESSURE HOSE BY FOOT	3.5
	FITTING-1/2FJIC	FILTER RETURN TO TANK	1
	FITTING-1/2MPIPE	OUTLET VALVE TO TANK RETURN	1

PARTS BREAKDOWN MODEL DIRTDWAG TORQUE SERIES
RICE HYDRO INC.

HOSE ASSEMBLY SECTION:

REF#..	PART NUMBER..	DESCRIPTION..	QTY
4	<u>HOSE PUMP TO INLET VALVE</u>		
	HOSE-1/2-2500XFT	HYDRAULIC PRESSURE HOSE BY FOOT	6
	FITTING-1/2FJIC	PUMP TO INLET VALVE	1
	FITTING-1/2MPIPE	INLET VALVE FROM PUMP	1
5	<u>HOSE SUCTION FROM TANK</u>		
	HOSE-3/4-1250XFT	HYDRAULIC PRESSURE HOSE BY FOOT	3
	FITTING-3/4FJIC	PUMP INLET FROM TANK RESERVOIR	1
	FITTING-3/4MPIPE	OUT OF TANK TO PUMP	1

AUGER BIT DRIVE ADAPTERS:

REF#..	PART NUMBER..	DESCRIPTION..	QTY
N/A	ADAPTER-7/8-STD	7/8" SQUARD DRIVE ADAPTER	1
N/A	ADAPTER-1&1/4-LB	1 & 1/4" FEMALE DRIVE ADAPTER	1
N/A	ADAPTER-1&3/8HEX	1 & 3/8" MALE HEXAGON DRIVE ADPTR	1
N/A	ADAPTER-1&1/4-STIHL	1 & 1/4" ROUND FEMALE W/LOCK ADPTR	1

PRICES SUBJECT TO CHANGE WITHOUT NOTICE

REVISED 1/1/08