

PARTS BREAKDOWN FOR MODEL DPH-56/250
RICE HYDRO, INC.

PART NUMBER..	DESCRIPTION..	QTY REQ'D
UD02-0001.08	RETAINER RING	2
UD02-0007.02	SEAL	2
SPEC-00238	DIAPHRAGM BOLT (02-0102.03)	6
UD02-0202.79	SUCTION ELBOW	1
UD02-0206.36	PISTON SLEEVE	6
UD02-0208.22	<i>ONLY AVAILIABLE IN SPEC-01740</i>	1
UD02-0209.B5	PUMP BODY	1
UD02-0214.04	BALL BEARING	2
UD02-0216.07	BEARING	1
SPEC-00801	RETAINER WASHER (02-0301.07)	6
UD02-0301.28	CRANKSHAFT WASHER	2
UD02-0302.59	ROD SPACER	2
UD02-0501.67	BEARING FLANGE	1
UD02-0604.39	NUT	1
UD02-0605.49	GASKET	1
SPEC-01291	DIAPHRAGM BUNA (02-0903.02)	6
SPEC-01365	O-RING (02-1101.01)	12
UD02-1101.G5	O-RING	24
SPEC-01368	O-RING (02-1101.04)	2
UD02-1101.68	O-RING	1
SPEC-01386	<i>ONLY AVAILIABLE IN SPEC-01740</i>	1
UD02-1101.51	O-RING	2
SPEC-01401	O-RING (02-1101.58)	1
UD02-1202.98	MOUNTING RAIL	2
UD02-1203.30	<i>ONLY AVAILIABLE IN SPEC-01740</i>	1
UD02-1605.38	MANIFOLD TUBE W/ 3/4" F	4
UD02-1205.08	PISTON	6
SPEC-01709	VALVE ASSEMBLY (02-6006.08)	12
UD02-6033.02	OIL RESERVOIR ASSY	1
UD02-6015.59	PISTON & ROD ASSY	6
UD02-1403.07	WASHER	2
UD02-1403.09	WASHER	30
SPEC-01845	WASHER (02-1403.10)	36
UD02-1403.12	WASHER	1
UD02-1502.02	CONNECTING ROD PIN	6
UD02-1506.02	SNAP RING	12
UD02-1509.05	PISTON RING	4
UD02-1506.16	SNAP RING	2
UD02-1519.33	CONNECTING ROD	6
UD02-1601.34	MANIFOLD TUBE	6
UD02-1601.33	INLET TUBE	1
UD02-1603.87	PLUG	2
UD02-1603.36	PLUG	2
UD02-1603.67	PLUG	1
UD02-1604.E3	HEAD	6
UD02-1605.37	DISCHARGE TUBE	1
UD02-1804.03	BOLT	6
UD02-1804.06	BOLT	3
UD02-1804.77	BOLT	1
SPEC-02486	BOLT (02-1804.79)	36
UD02-1804.25	BOLT	24
UD02-1805.04	BOLT	2
UD02-1805.06	<i>ONLY AVAILIABLE IN SPEC-01740</i>	3

PARTS BREAKDOWN FOR MODEL DPH-56/250
RICE HYDRO, INC.

PART NUMBER..	DESCRIPTION..	QTY REQ'D
UD02-1805.71	BOLT	2
UD02-0002.87	CRANKSHAFT	1
SPEC-05949	BOLT (02-1804.72)	12
UD02-0501.H9	OIL RESERVOIR ADAPTER	1
UD02-1101.93	O-RING	2
UD02-1101.56	O-RING	1
UD02-1403.36	WASHER	3
UD02-1219.02	PTO SAFETY SHIELD (<i>PICTURE NOT ACCURATE</i>)	1
UD02-1219.15	SHAFT PROTECTOR	1
UD02-1412.03	WASHER	2

MISCELLANEOUS PARTS:

HONDA-GX390UT2-HA2	13 HP, 390 CC HONDA ENGINE	1
PUMP-DIA-56/250	56 GPM AT 250 PSI DIAPHRAGM PUMP	1
GAUGE-600	0-600 PSI LIQUID GAUGE	1
BALLVALVE-1&1/4	1&1/4" BALLVALVE	1
CHECKVALVE-1&1/4	1&1/4" SPRING CHECKVALVE	1
VALVE-RELIEF-300PSI	300 PSI PRESSURE REGULATOR	1
CARTON-TR6	EXTRA LARGE SHIPPING BOX	1
LABEL-KIT-DP	INSTRUCTION AND CAUTION STICKERS	1

PUMP OUTLET CONNECTIONS TO PIPING:

EL-G-1&1/2X90	1&1/2" X 90 GALV. ELBOW	1
HOSEBARB-S-1&1/2	1&1/2" BARB X MNPT	1

OUTLET HOSE:

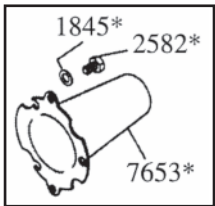
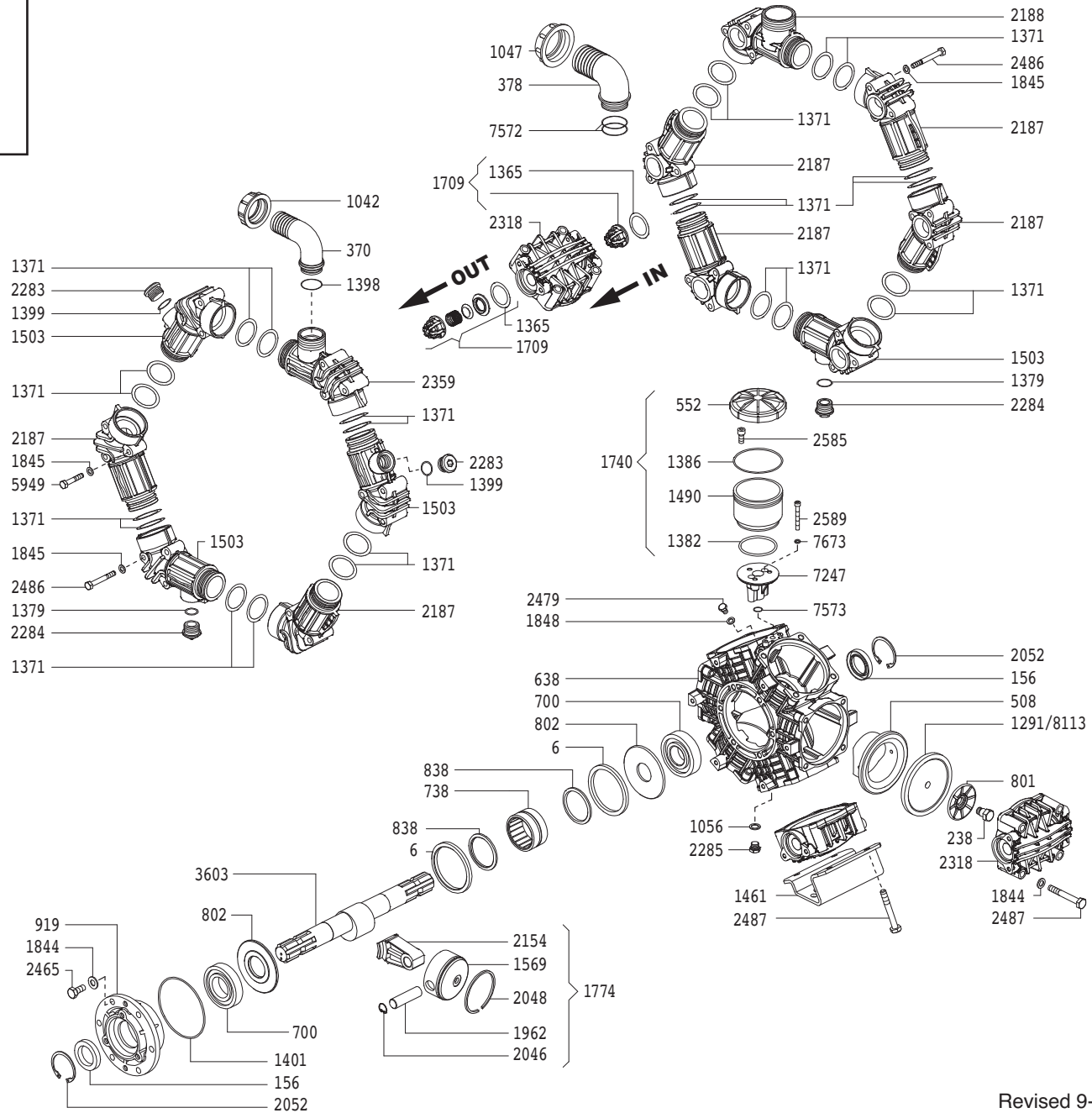
HOSE-1&1/4-OUTLET	1&1/4" OUTLET HOSE - 8 FOOT	1
-------------------	-----------------------------	---

KITS:

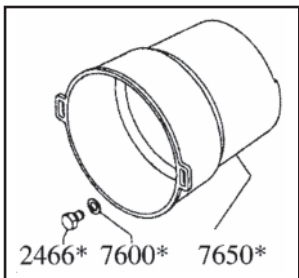
SPEC-8700.29	DIAPHRAGM REPAIR KIT (BUNA)	
	SPEC-01365, O-RING	QTY 12
	SPEC-01291, DIAPHRAGM	QTY 6
SPEC-8700.44	DIAPHRAGM REPAIR KIT (DESMOPAN)	
	SPEC-01365, O-RING	QTY 12
	SPEC-08113, DIAPHRAGM	QTY 6

ZETA-230/CC - Exploded View Diagram & Parts List

ZETA-230/CC PUMPS
 Require 90oz.
 UDOR LUBE, or SAE 30W
 Non-detergent Oil



*Optional
 Thru-Shaft
 Protector



*Optional PTO
 Safety Shield