

PARTS BREAKDOWN FOR MODELS FH4-SERIES  
RICE HYDRO, INC.

PART NUMBER..	DESCRIPTION..	QTY REQ'D
UD04-0007.39	SEAL	3
UD04-0007.41	SEAL	1
UD04-0009.08	SHAFT COLLAR	1
UD04-0014.32	PLUNGER ROD	3
UD04-0023.21	SUPPORT RING	3
UD04-0028.22	CRANKSHAFT	1
UD04-0103.39	ALUMINUM CONNECTING ROD	3
UD04-0115.07	ROD GUIDE	3
UD04-0208.69	BACK COVER	1
UD04-0209.71	CRANKCASE	1
UD04-0248.02	BEARING	1
UD04-0248.04	BEARING	1
UD04-0301.55	SLINGER RING	3
UD04-0303.18	PLUNGER NUT	3
UD04-0501.D9	BEARING CAP	1
UD04-0501.E1	BEARING CAP	1
UD04-0517.09	FLANGE	1
UD04-0602.77	GASKET BACK COVER	1
UD02-0605.09	GASKET	1
UD04-0605.40	GASKET	1
UD04-0605.49	WASHER	1
UD04-0614.15	SET SCREW	1
UD04-1101.A2	O-RING	6
UD04-1101.A3	O-RING	6
UD04-1101.F6	O-RING	2
UD04-1101.60	O-RING	3
UD04-1101.82	O-RING	3
UD04-1205.30	PLUNGER 18 MM	3
UD04-1403.32	PLUNGER WASHER	3
UD04-1411.02	WASHER	12
UD04-1502.13	CONNECTING ROD PIN	3
UD04-1534.01	SHIM .003	1
UD04-1534.02	SHIM .010	1
UD04-1603.60	VALVE CAP	6
UD04-1603.62	INLET PLUG 3/4"	1
UD04-1603.64	DISCHARGE PLUG 3/8"	1
UD02-1603.67	OIL PLUG	1
UD04-1603.69	OIL SIGHT GLASS	1
UD04-1604.58	MANIFOLD 18 MM	1
UD04-1804.02	BOLT	8
UD02-1804.18	BOLT	4
UD04-1804.26	BOLT	5
UD04-1804.57	BOLT	4
UD04-6058.59	OIL DIP STICK	1

MOTORS & PUMPS:

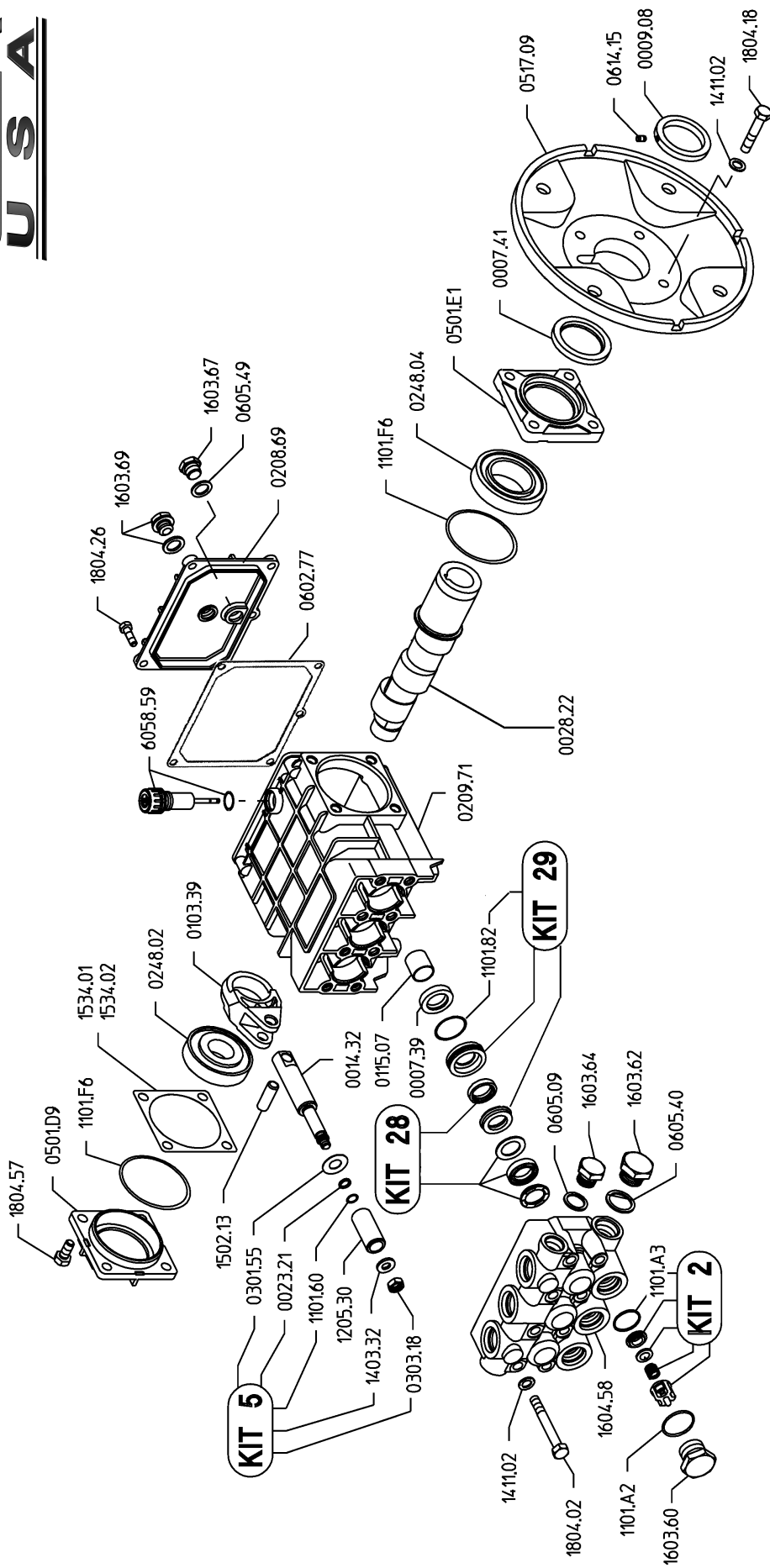
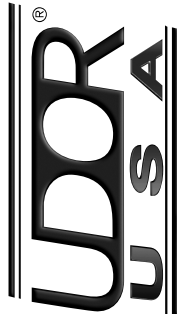
MOTOR-CL3619TM	3HP 60HZ 1PH 230V MOTOR (FH4E)	1
MOTOR-FH4EF-1PH	3HP 50HZ 1PH 230V MOTOR (FH4EF-1PH)	1
MOTOR-CFAC-FH4EF-1PH	C-FACE KIT FOR 50HZ 1PH MOTOR (FH4EF-1PH)	1
MOTOR-CM3611-T	3HP 60HZ 3PH 208/230/460V MOTOR (FH4E-3PH)	1
MOTOR-FH4EF-3PH	3HP 50HZ 3PH 110/220V MOTOR (FH4EF-3PH)	1
MOTOR-CFAC-FH3EF-3PH	C-FACE KIT FOR 50HZ 3PH MOTOR (FH4EF-3PH)	1
PUMP-MD4.0/20-U	TRIPLEX PLUNGER PUMP	1

PARTS BREAKDOWN FOR MODELS FH4-SERIES  
RICE HYDRO, INC.

PART NUMBER..	DESCRIPTION..	QTY REQ'D
MISCELLANEOUS PARTS..		
VALVE-RELIEF-2000PSI	PRESSURE REGULATOR	1
VALVE-RELIEF-900PSI	PRESSURE REGULATOR (FH3EF-3PH)	1
SWIVEL-INLET-FH3	2&1/2" FEMALE SWIVEL INLET	1
GAUGE-1500	0-1500 PSI LIQUID GAUGE	1
HOSE-1/2X2-RH	FH SERIES HOSE	1
CASTER-RIGID-4	4" RIGID CASTER	2
CASTER-SWIVEL-4	4" SWIVEL CASTER	2
CHECKVALVE-1/2F	1/2" FEMALE CHECKVALVE	1
BALLVALVE-HP-1/2	1/2" BLEEDVALVE	1
BALLVALVE-S-1&1/2	STAINLESS STEEL BALLVALVE	5
LABEL-KIT-FH	INSTRUCTION AND CAUTION STICKERS	1
KITS..		
	*KITS ARE ALL INCLUSIVE*	
UD04-KIT-UD2	VALVE KIT	1
UD04-KIT-UD5	PLUNGER BOLT KIT	1
UD04-KIT-UD28	SEAL KIT	1
UD04-KIT-UD29	BRASS KIT	1
ADAPTERS & ACCESSORIES..		
ADAPTER-NST-1&1/2"	1&1/2" NPT X NST OUTLET ADAPTER	4
ADAPTER-NST-2&1/2"	2&1/2" NPT X NST OUTLET ADAPTER	4
FHWA	PRESSURE WAND ACCESSORY	1
LINECAGE-1	SAFETY ANCHOR DEVICE	1

Revised 10-1-2005

# MD 4.0/20-U & MD 4.0/30-U



## MD 4.0/20-U & MD 4.0/30-U Quick Reference

Maximum Flow .....	4.0 GPM	Valve Kit .....	04-KIT UD-2
Max. Pressure MD 4.0/20-U ...	2000 PSI	Seal Kit .....	04-KIT UD-28
MD 4.0/30-U ...	3000 PSI	Brass Kit .....	04-KIT UD-29
Rated Pump Speed .....	1750 RPM	Plunger Bolt Kit .....	04-KIT UD-5
Oil Capacity .....	20 oz. UDOR LUBE	Plunger Part # .....	04-1205.30
or SAE 30W Non-Detergent Oil		Plunger Diameter .....	18 MM

**MD 4.0/20-U**  
**MD 4.0/30-U**