

PARTS BREAKDOWN FOR MODELS: EL1, EL1A, EL2, EL3
RICE HYDRO INC.

PART NUMBER..	DESCRIPTION..	QTY REQ'D
UD04-0006.09	BEARING	1
UD04-0007.18	SEAL	3
UD04-0007.24	SEAL	1
UD04-0009.09	RETAINER CLIP	1
UD04-0014.20	PLUNGER ROD	3
UD04-0023.22	SUPPORT RING	1
UD04-0031.42	CRANKSHAFT - EL2/EL3	1
UD04-0031.45	CRANKSHAFT - EL1/EL1A	1
UD04-0103.41	ALUMINUM CONNECTING ROD	3
UD04-0208.70	BACK COVER	1
UD04-0208.72	CRANKCASE COVER	1
UD04-0209.56	CRANKCASE	1
UD04-0214.21	BEARING	1
UD04-0301.42	SLINGER RING	1
UD04-0303.18	PLUNGER NUT	1
UD04-0517.08	ELECTRIC FLANGE	1
UD04-0602.76	GASKET - CRANKCASE COVER	1
UD02-0605.09	ALUMINUM WASHER	1
UD04-0605.33	PLUNGER WASHER	1
UD04-0605.49	O-RING	1
UD04-1101.A2	O-RING	6
UD04-1101.A3	VALVE O-RING	6
UD04-1101.A4	O-RING	1
UD04-1101.A6	O-RING (pictured as 1101.86)	1
UD04-1101.A7	O-RING	1
UD04-1101.A7	O-RING (pictured as 1101.D7)	1
UD04-1205.35	PLUNGER - 15 MM	3
UD04-1212.10	SIDE PLATE	1
UD04-1411.01	WASHER	12
UD04-1502.15	CONNECTING ROD PIN	3
UD04-1506.26	SNAP RING	1
UD04-1603.64	3/8" PLUG	1
UD02-1603.67	DRAIN PLUG	1
UD04-1603.69	SIGHT GLASS	1
UD04-1603.72	VALVE CAP	6
UD04-1604.C7	ALUMINUM MANIFOLD EL1/EL1A	1
UD04-1604.59	BRASS MANIFOLD EL2/EL3	1
UD04-1805.19	BOLT	4
UD04-1805.20	BOLT	8
UD04-1805.39	BOLT	8
UD04-6058.26	OIL VENT CAP	1

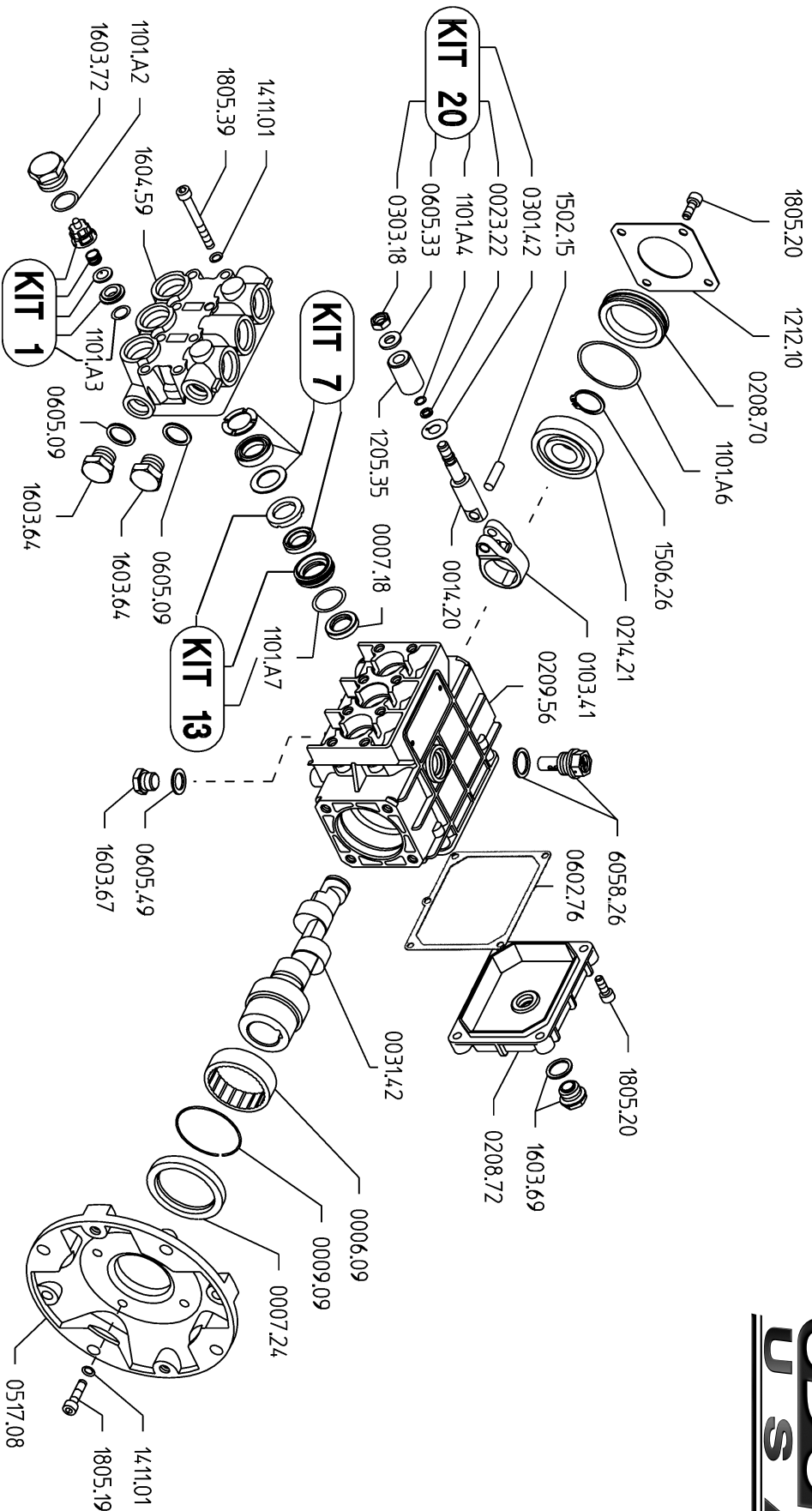
OUTLET HOSES:

HOSE-1/2X8-RH (EL1/1A)	8' FOOT OUTLET HOSE - STANDARD	1
COUPLERBODY-1/2 (EL1/1A)	FEMALE PUMP OUTLET - HOSE	1
COUPLERPLUG-1/2 (EL1/1A)	MALE PUMP OUTLET - PIPING	1
FITTING-1/2-MPIPE (EL1/1A)	FITTING FOR HOSE - RIGID	1
FITTING-1/2-MPX (EL1/1A)	FITTING FOR HOSE - SWIVEL	1
HOSE-1/2-2500XFT (EL1/1A)	SPECIFY LENGTH OF HOSE	
HOSE-3/8X8-RH (EL2/3)	8' FOOT OUTLET HOSE - STANDARD	1
COUPLERBODY-BR-3/8F (EL2/3)	FEMALE PUMP OUTLET - HOSE	1
COUPLERPLUG-3/8M (EL2/3)	MALE PUMP OUTLET - PIPING	1
FITTING-3/8-MPIPE (EL2/3)	FITTING FOR HOSE - RIGID	1
FITTING-3/8-MPX (EL2/3)	FITTING FOR HOSE - SWIVEL	1
HOSE-3/8-3000XFT (EL2/3)	SPECIFY LENGTH OF HOSE	

PARTS BREAKDOWN FOR MODELS: EL1, EL1A, EL2, EL3
RICE HYDRO INC.

PART NUMBER..	DESCRIPTION..	QTY REQ'D
MOTORS & PUMPS:		
MOTOR-1/2HP-EL1 - L (EL1)	1/2HP 110/220V 1 PHASE 60HZ	1
MOTOR-1HP-CFACE (EL1A/2)	1HP 110/220V 1 PHASE 50/60HZ	1
MOTOR-1.5HP-50/60HZ (EL3)	1.5HP 110/220V 1 PHASE 50/60HZ	1
SPEC-PND-3.0/15-ZA (EL1/1A)	TRIPLEX PLUNGER PUMP	1
SPEC-PNL3.0/20-Z (EL2/3)	TRIPLEX PLUNGER PUMP	1
MISCELLANEOUS PARTS:		
HOESWIVEL-1/2	HOSE SWIVEL INLET	1
HOESCREEN&WASHER	INLET HOSE SCREEN	1
BALLVALVE-1/2 (EL1/1A)	OUTLET BALLVALVE	1
BALLVALVE-3/8HP (EL2/3)	OUTLET BALLVALVE	1
VALVE-RELIEF-500PSI (EL1/1A) BLUE SPRING 50-500 PSI	PRESSURE REGULATOR	1
VALVE-RELIEF-900PSI (EL2) RED SPRING 100-900 PSI	PRESSURE REGULATOR	1
VALVE-RELIEF-2000PSI (EL3) YELLOW SPRING 200-2000 PSI	PRESSURE REGULATOR	1
GAUGE-600 (EL1/1A)	0-600 PSI LIQUID GAUGE	1
GAUGE-1500 (EL2)	0-1500 PSI LIQUID GAUGE	1
GAUGE-2000 (EL3)	0-2000 PSI LIQUID GAUGE	1
NEEDLEVALVE-1/4	AIR BLEED VALVE	1
KING-EL1A	SHIPPING BOX	1
LABEL-KIT-EL	INSTRUCTION AND CAUTION STICKERS	1
KITS:		
	*Kits are all inclusive for PND/PNL pumps	
UD04-KIT-UD1	VALVE KIT	
UD04-KIT-UD7	SEAL KIT	
UD04-KIT-UD13	BRASS KIT 15MM	
UD04-KIT-UD20	PLUNGER O-RING KIT 15MM	

PNL 3.0/20-Z



PNL 3.0/20-Z Quick Reference

Maximum Flow	3.0 GPM	Valve Kit	04-KIT UD-1
Maximum Pressure	2000 PSI	Seal Kit	04-KIT UD-7
Rated Pump Speed	3400 RPM	Brass Kit	04-KIT UD-13
Oil Capacity	12 oz. UDOR LUBE or SAE 30W	Plunger Bolt Kit	04-KIT UD-20
		Plunger Part #	04-1205.35
		Plunger Diameter	15 MM