

PARTS BREAKDOWN FOR MODEL DP(H)-3B w/UDOR
RICE HYDRO INC.

PUMP PARTS:

PART NUMBER..	DESCRIPTION..	QTY REQD
SPEC-00189	RETAINING RING (02-0001.11)	2
UD02-0002.B7	SHAFT - GR	1
UD02-0006.14	BEARING	1
SPEC-00157	SEAL (02-0007.05)	1
SPEC-00240	DIAPHRAGM BOLT (02-0102.04)	3
SPEC-00357	SUCTION ELBOW (02-0202.18)	1
UD02-0206.41	PISTON SLEEVE	3
UD02-0208.98	OIL RESERVOIR CAP	1
SPEC-00592	CRANKCASE (02-0209.B8)	1
UD02-0214.05	BEARING	1
SPEC-00808	RETAINING WASHER (02-0301.43)	3
SPEC-00816	SPACER (02-0301.54)	1
SPEC-00817	SPACER (02-0302.66)	2
SPEC-00964	BODY FLANGE (02-0501.E2)	1
SPEC-01038	BARB NUT (02-0604.18)	1
SPEC-01075	GASKET (02-0605.43)	1
SPEC-01192	SHAFT KEY (02-0801.02)	1
SPEC-01305	PISTON DIAPHRAGM BUNA (02-0903.43)	3
SPEC-01381	O-RING (02-1101.27)	6
SPEC-01382	O-RING (02-1101.29)	6
UD02-1101.41	O-RING	1
SPEC-01421	O-RING (02-1101.88)	1
UD02-1101.98	O-RING - OIL RESERVIOR	1
UD02-1101.B6	O-RING - OIL RESERVIOR	1
SPEC-04801	O-RING (02-1101.C3)	1
UD02-1202.63	RIGHT BASE PLATE	1
UD02-1202.64	LEFT BASE PLATE	1
UD02-1203.28	OIL RESERVIOR	1
UD02-1205.07	PISTON	3
UD02-1403.07	WASHER	2
UD02-1403.09	WASHER	11
UD02-1412.03	BONDED WASHER	3
UD02-1502.03	CONNECTING ROD PIN	3
UD02-1506.07	SNAP RING	1
UD02-1506.15	SNAP RING	6
UD02-1519.28	CONNECTING ROD	3
UD02-1603.64	PLUG	1
UD02-1603.G9	PLUG	6
UD02-1604.G9	HEAD	3
UD02-1804.21	HEX BOLT	15
UD02-1805.20	ALLEN BOLT	9
UD02-1805.71	ALLEN BOLT	2
UD02-6015.45	ROD ASSEMBLY	3
UD02-6017.13	HEAD ASSEMBLY	3
SPEC-01740	OIL RESERVIOR ASSEMBLY (02-6033.13)	1
SPEC-01702	VALVE ASSEMBLY (02-6063.04)	6

** GEAR REDUCTION

SPEC-00112	ENGINE GEAR (02-0004.18)	1
SPEC-00137	BEARING (02-0006.08)	1
SPEC-00688	PUMP GEAR (02-0213.41)	1
SPEC-00756	GEAR CASE HALF (02-0228.23)	1
SPEC-00977	GASKET (02-0602.05)	1
SPEC-00988	GASKET (02-0602.27)	1
SPEC-01072	GASKET (02-0605.09)	1
SPEC-01400	O-RING (02-1101.57)	1
SPEC-01845	WASHER (02-1403.10)	4
SPEC-01847	ALUMINUM GASKET (02-1403.12)	1
SPEC-01861	WASHER (02-1403.39)	1
SPEC-01886	LOCK WASHER (02-1411.03)	1
SPEC-02034	GEAR CASE HALF (02-1505.29)	1
SPEC-02251	OIL PLUG (02-1603.02)	1
UD04-1603.69	OIL SIGHT GAUGE	1
SPEC-02288	VENT CAP (02-1603.81)	1
SPEC-02481	BOLT (02-1804.07)	1
SPEC-02580	BOLT (02-1805.01)	4
SPEC-02596	BOLT OLD STYLE (1805.23) ALLEN HEAD	6
SPEC-02622	BOLT 5/16" X 1" (02-1807.07)	4
SPEC-02623	BOLT 5/16" X 2 1/4" (02-1807.08)	1
SPEC-05678	GUIDE PIN (02-1512.08)	1
SPEC-05949	BOLT (02-1804.72)	6

PARTS BREAKDOWN FOR MODEL DP(H)-3B w/UDOR
RICE HYDRO INC.

MISCELLANEOUS PARTS:

GAUGE-600	0-600 PSI LIQUID GAUGE
HOSE-1/2X8-RH	8 FOOT OUTLET HOSE
FITTING-1/2MPIPE	MALE PIPE FITTING
FITTING-1/2-MPX	MALE PIPE SWIVEL
HOSE-1/2-2500XFT	SPECIFY LENGTH OF HOSE
BALLVALVE-1/2	1/2" F X F BALLVALVE
CHECKVALVE-1/2M	1/2" M X M INLINE CHECKVALVE
SPRAY-6815-700-1/2	1/2" PRESSURE RELIEF VALVE
BRIGG-130G32-0022-F1	206 CC FLANGE MOUNT BRIGGS ENGINE
HONDA-GX200UT2-QX2	196 CC FLANGE MOUNT HONDA ENGINE
KING-LARGE	SHIPPING BOX FOR DP(H)-3B
COUPLERBODY-1/2	FEMALE CONNECT TO OUTLET HOSE
COUPLERPLUG-1/2	MALE PUMP OUTLET PIPING
INLET-HOSE-ASSEMBLY	1" X 9' FOOT CLEAR HOSE W/STRAINER
PUMP-DP43-GR	REPLACEMENT PUMP WITH GEAR REDUCTION
DIAPHRAGM-SUCTION	1&1/2" BLACK INLET SUCTION DIAPHRAGM
DIAPHRAGM-CLAMP	1&1/2" INLET SUCTION CLAMP
UD02-8704.29	OUTLET ADAPTER

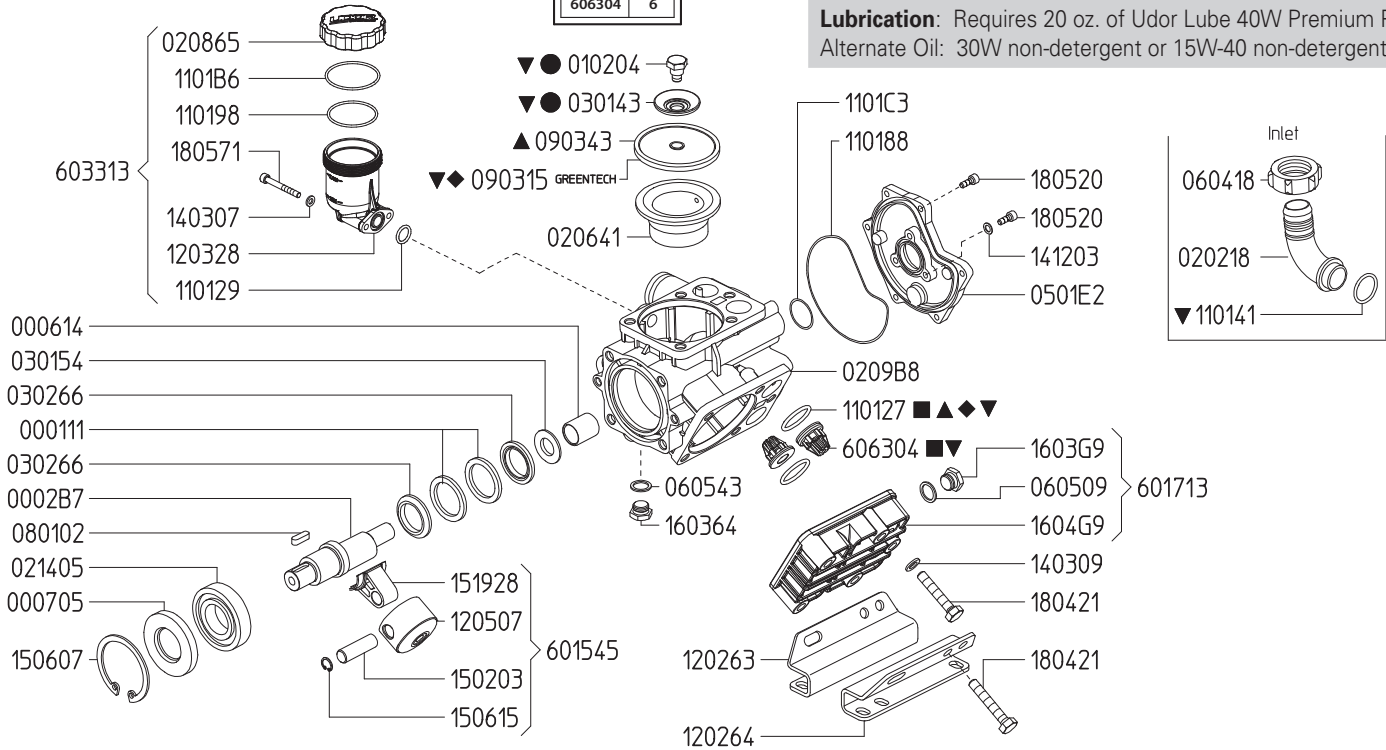
KITS:

SPEC-DP43-RH1	DIAPHRAGM REPAIR KIT (6) SPEC-01381, O-RING (3) SPEC-01305, BUNA DIAPHRAGM
SPEC-DP43-RH2	VALVE KIT (6) SPEC-01702, VALVE ASSY W/O-RING
SPEC-DP43-RH3	DIAPHRAGM REBUILD KIT (3) SPEC-01305, BUNA DIAPHRAGM (6) SPEC-01702, VALVE ASSY W/O-RING
SPEC-8700.46CK	DIAPHRAGM COMPLETE KIT (3) SPEC-01305, BUNA DIAPHRAGM (6) SPEC-01702, VALVE ASSY W/O-RING (3) SPEC-00808 WASHER (3) SPEC-00240 BOLT

Maximum Flow	10.5 GPM / 40 lpm
Maximum Pressure	560 PSI / 38 bar
Maximum RPM	550 RPM
Inlet Port - Hose Barb	1" HB
Outlet Ports - Hose Barb, Valve	(2) 1/2" HB
Bypass - Hose Barb	3/4" HB
Dimensions - Pump Only	9.5" L x 11.5" W x 10.0" H
Weight - with GR	39 lbs

Lubrication: Requires 20 oz. of Udor Lube 40W Premium Pump Oil.
Alternate Oil: 30W non-detergent or 15W-40 non-detergent oil.

870045 KIT 634		6062A2 KIT 601		606246 KIT 545		606248 KIT 547		8700.45CK	
CODE	QTY	CODE	QTY	CODE	QTY	CODE	QTY	CODE	QTY
090315	3	090343	3	110127	6	010204	3	010204	3
110127	6	110127	6	606304	6	030143	3	030143	3
								110141	1
								110127	6
								606304	6

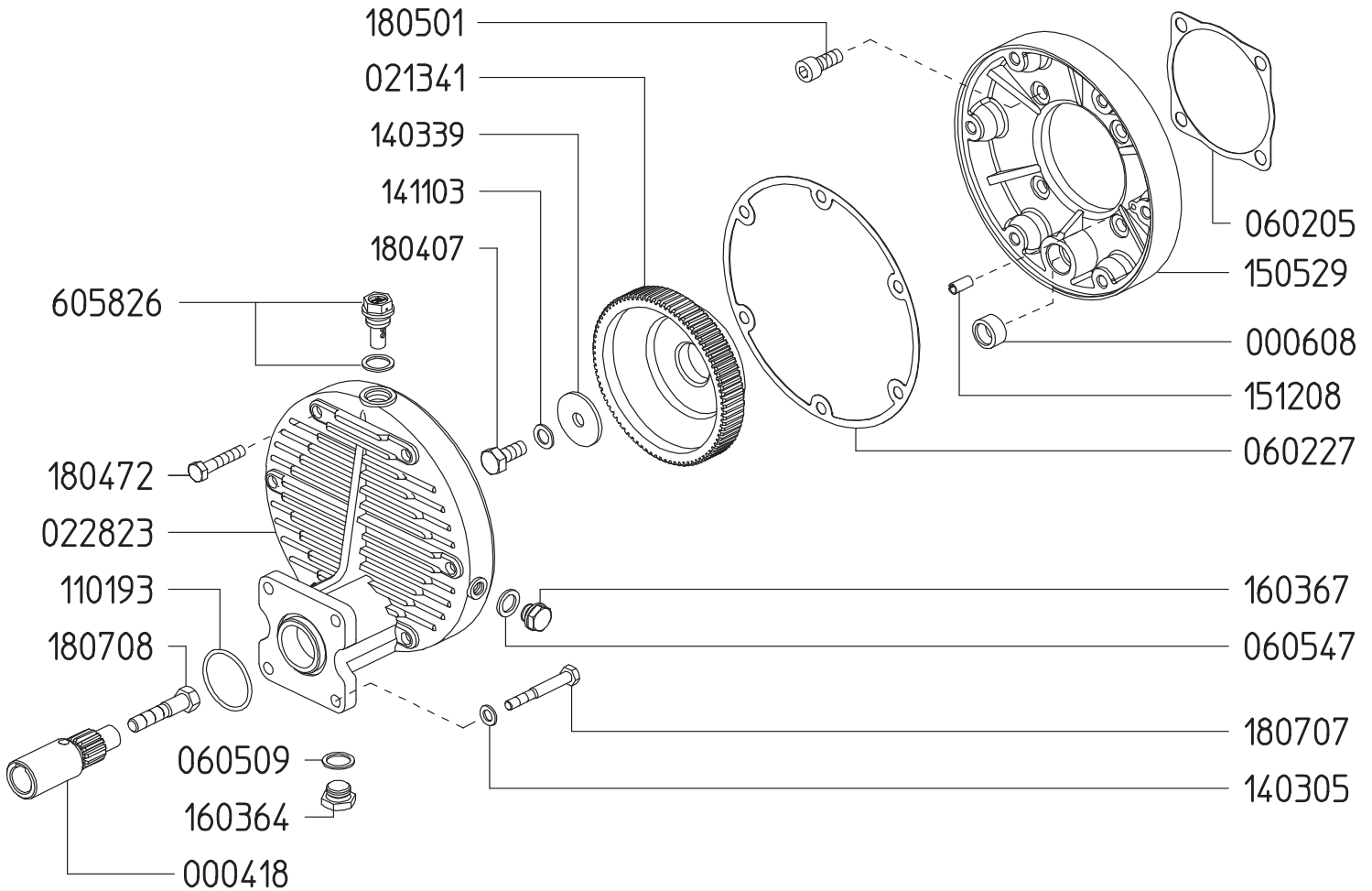


Revised 4-13-2021

Part #	Description	Qty	Part #	Description	Qty
0001.11	RETAINER RING	2	1203.28	OIL RESERVOIR	1
0002.B7	SHAFT - GR	1	1205.07	ALUMINIUM PISTON D55	3
0006.14	BUSHING D20	1	1403.07	WASHER D6.4	2
0007.05	OIL SEAL D35	1	1403.09	WASHER D10.5	11
0102.04	DIAPHRAGM BOLT ●▼	3	1412.03	BONDED WASHER D6.7	3
0202.18	HOSE BARB D25 (1")	1	1502.03	PIN D15X48	3
0206.41	SLEEVE D55	3	1506.07	SNAP RING D72	1
0208.65	OIL RESERVOIR COVER	1	1506.15	SNAP RING D15	3
0209.B8	CRANKCASE	1	1519.28	CONNECTING ROD	3
0214.05	BALL BEARING D35	1	1603.64	PLUG G3/8	1
0301.43	DIAPHRAGM DISC ●▼	3	1603.G9	PLUG G3/8	6
0301.54	BEARING DISC	1	1604.G9	HEAD	3
0302.66	ROD SPACER	2	1804.21	HEX BOLT M10X55	15
0501.E2	CRANKCASE FLANGE	1	1805.20	ALLEN BOLT M6X16	9
0604.18	BARB NUT M4X2	1	1805.71	ALLEN BOLT M6X50	2
0605.09	GASKET D17	6	6015.45	ROD ASSEMBLY D55	3
0605.43	GASKET D17	1	6017.13	HEAD ASSEMBLY	3
0801.02	KEY A8X7X25	1	6033.13	OIL RESERVOIR ASSEMBLY	1
0903.15	PISTON DIAPHRAGM D90 - GREENTECH ◆▼	3	6063.04	VALVE ASSEMBLY W/O O-RING ●▼	6
0903.43	PISTON DIAPHRAGM D90 - BUNA ▲	3	6062.46	IN/OUTLET VALVE KIT (KIT 545)	1
1101.27	O-RING - VALVE ◆▲●▼	6	6062.48	DIAPHRAGM BOLT/WASHER (KIT 547)	1
1101.29	O-RING - OIL RESERVOIR	1	6062.A2	DIAPHRAGM KIT - BUNA-N (KIT 601)	1
1101.41	O-RING - INLET HOSE BARB ▼	1	8700.45	DIAPHRAGM KIT - GREENTECH (KIT 634)	1
1101.88	O-RING - CRANKCASE FLANGE	1	8700.45CK	COMPLETE REPAIR KIT	1
1101.98	O-RING - OIL RESERVOIR	1			
1101.B6	O-RING - OIL RESERVOIR	1			
1101.C3	O-RING - CRANKCASE FLANGE	1			
1202.63	RIGHT BASE PLATE	1			
1202.64	LEFT BASE PLATE	1			

- Parts in 6062.46 (Kit 545).
- Parts in 6062.48 (Kit 547).
- ▲ Parts in 6062.A2 (Kit 601).
- ◆ Parts in 8700.45 (Kit 634).
- ▼ Parts in 8700.45CK (Complete Repair Kit).

**GAS ENGINE GEAR REDUCTION FOR
KAPPA 32, KAPPA 43, DELTA 40 DIAPHRAGM PUMPS
on GAS ENGINES with 3/4" SHAFTS
REQUIRES 16 OZ. 90W GEAR LUBE**



Revised 2-1-2021

Part #	Description	Qty	Part #	Description	Qty
0004.18	GEAR SHAFT - 3/4"	1	1411.03	SERATED WASHER D10	1
0006.08	BEARING	1	1505.29	GEAR CASE - PUMP	1
0213.41	PUMP GEAR - VA	1	1512.08	ALIGNMENT PIN	1
0228.23	GEAR CASE - ENGINE	1	1603.64	OIL PLUG G3/8	1
0602.05	GASKET	1	1603.67	OIL PLUG G1/4	1
0602.27	GASKET	1	1804.07	HEX BOLT M10X25	1
0605.09	GASKET - ALUMINUM	1	1804.72	HEX BOLT M8X50	6
0605.47	GASKET - ALUMINUM	1	1805.01	ALLEN BOLT M10X25	4
1101.93	O-RING	1	1807.07	HEX BOLT 5/16 X 1"	4
1403.05	WASHER D8.4	4	1807.08	HEX BOLT 5/16 X 2-1/4"	1
1403.39	WASHER D11	1	6058.26	VENTED OIL CAP	1

KAPPA 43 DIMENSIONS

All Dimensions are WITHOUT Control Unit or Regulator

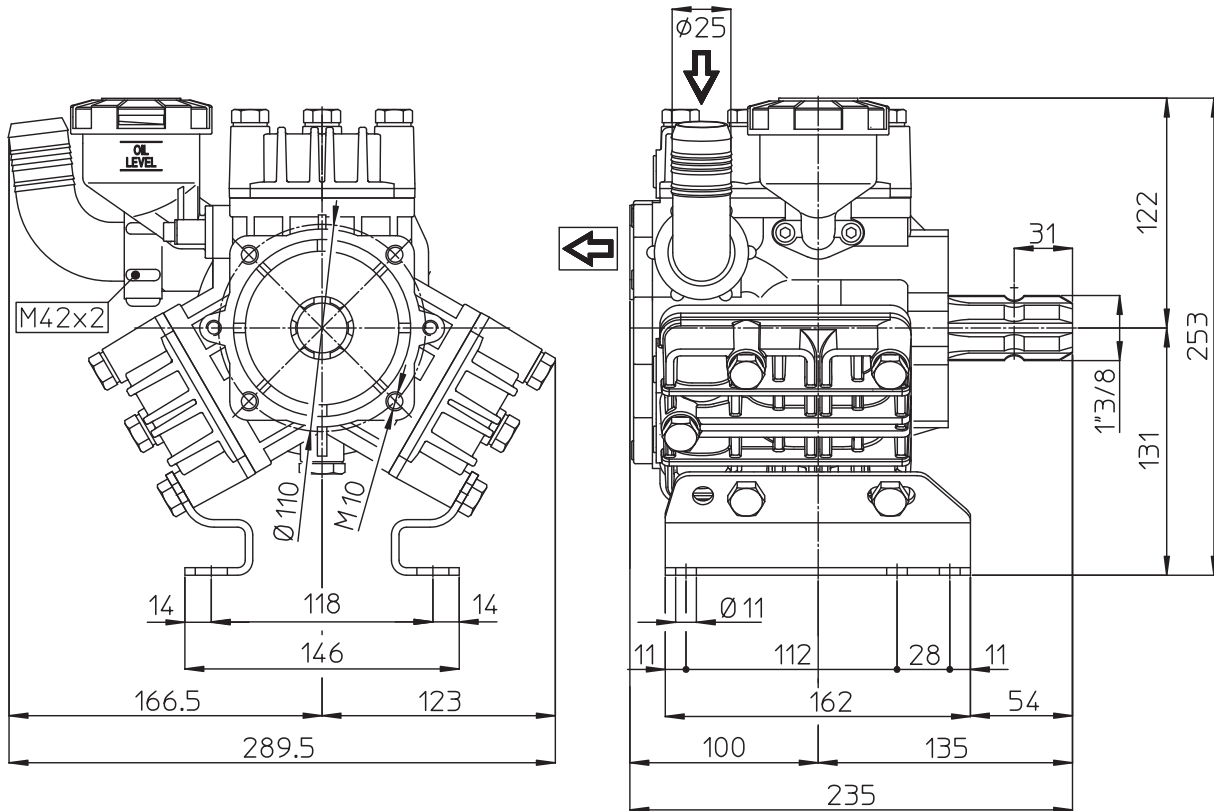
Dimensional Drawings are Shown in Millimeters. To Convert to Inches, Multiply Dimension x 0.03937

Specifications

KAPPA 43

Inlet Port - Hose Barb	1" HB
Outlet Ports - Hose Barb	(2) 1/2" HB
Bypass - Hose Barb	3/4" HB
Dimensions	9.5" L x 11.5" W x 10.0" H
Diaphragm Material	GREENTECH (Std) Buna-N (Opt)

Lubrication: Requires 20 oz. of Udor Lube 40W Premium Pump Oil. Alternate Oil: 30W non-detergent or 15W-40 non-detergent oil.



TORQUE SPECS

Ref.	Description	Ft./lb.	Nm
1	Diaphragm Bolts (Use Loctite 243)	18	25
2	Head Bolts	30	40
3	Pulsation Dampener Bolts	-	-
4	Inlet Flange Bolts	7	10
5	Bearing Flange Bolts	-	-
6	Oil Cup Bolts	6	8
7	Valve Cover Bolts	-	-

