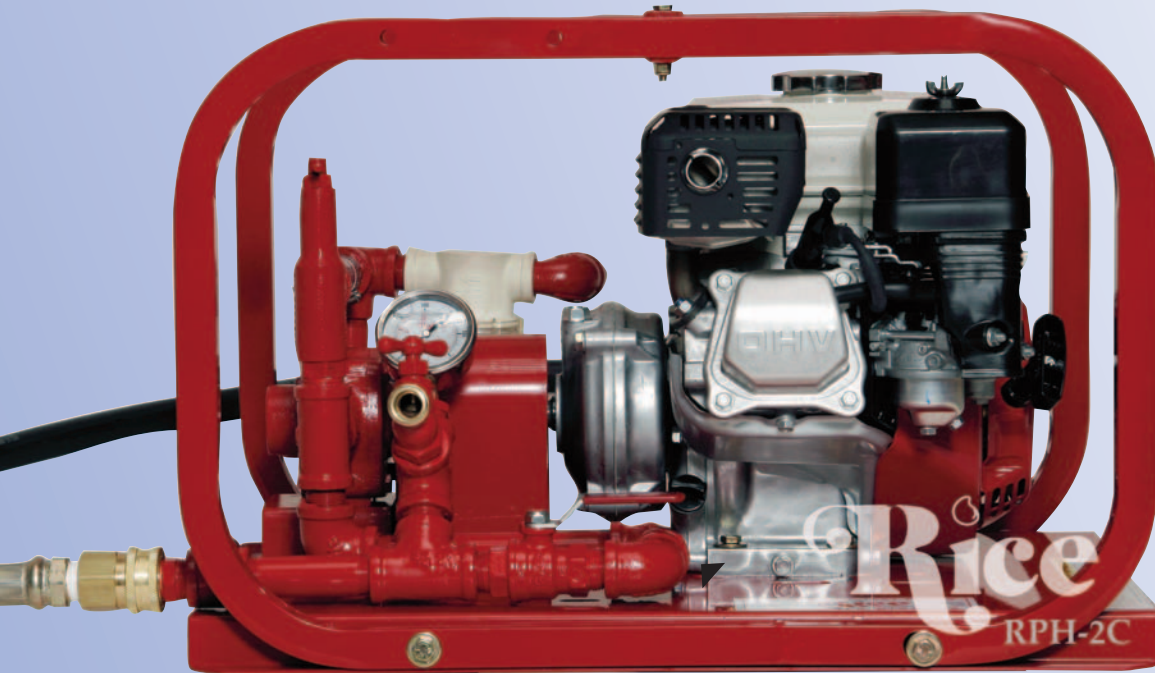


**HYDROSTATIC TEST PUMPS**

**Model RP-2C • 5 GPM • 300 PSI**



The RP-2C is a mid-volume low pressure hydrostatic test pump. Designed for testing small diameter lines, this unit is a must for the plumbing and landscaping contractor. The polypropylene roller pump allows for an exceptionally smooth test, while minimizing maintenance and repair with no valves to replace. There are no external moving parts for increased operator safety and reduced liability risks. Virtually indestructible, the RP-2C is enclosed in a rugged roll cage of welded heavy gauge steel. This unit is available with a Briggs & Stratton or Honda engine option.

- **Automatic Pressure Regulator with Inlet Bypass**
- **Stainless Steel Liquid-Filled Gauge Ensures Accurate Readings, with Less Flutter**
- **Stainless Steel Ballvalve to Isolate Pressure**
- **In-Line Strainer with Stainless Steel Mesh Filter and Clear Bowl**



3500 Arrowhead Drive  
Carson City  
Nevada  
89706

web site:  
[www.ricehydro.com](http://www.ricehydro.com)

e-mail:  
[ricehydro@ricehydro.com](mailto:ricehydro@ricehydro.com)

Phone:  
(775) 885-1280

Fax:  
(800) 998-7423


**S P E C I F I C A T I O N S**

- **INLET:** 3/4" female hose swivel
- **OUTLET:** 3/4" with Quick Connect Couplings  
High pressure 8 ft. hose  
Pressure regulator adjusting to 300 PSI
- **PUMP:** NI-resist roller pump with polypropylene rollers for long life
- **OUTPUT FLOW:** 5 GPM
- **MAX. OUTPUT PRESSURE:** 300 PSI
- **ENGINE:** 160 CC, air-cooled, 4-cycle, Briggs or Honda engine option
- **SHIPPING DIMENSIONS:** 27" x 22" x 19"
- **SHIPPING WEIGHT:** 97# with pallet 115#

m . c o . r o . d y . e h . i c e . r i . w . w

RICE HYDRO, INC.  
MANUFACTURER'S OPERATING INSTRUCTIONS  
DE & RP SERIES MODEL TEST PUMPS

**FOR WARRANTY REGISTRATION CALL: 1-800-245-4777**

 **WARNING:** Operating, servicing and maintaining this equipment can expose you to chemicals including engine exhaust, carbon monoxide and lead, which are known to the State of California to cause cancer and birth defects or other reproductive harm. To minimize exposure, avoid breathing exhaust, do not idle the engine except as necessary, operate and service your equipment in a well-ventilated area and wear gloves or wash your hands frequently when servicing your equipment. For more information go to: [www.p65warnings.ca.gov](http://www.p65warnings.ca.gov)

**REMEMBER THESE CAUTIONS:**

1. Check **ALL** fluid levels prior to operating pump.
2. Use a sound 3/4" or larger supply hose.
3. DO NOT run dry or pump chlorine thru unit.
4. Protect the pump from freezing, FLUSH with anti-freeze.

**CONNECTING THE PUMP:**

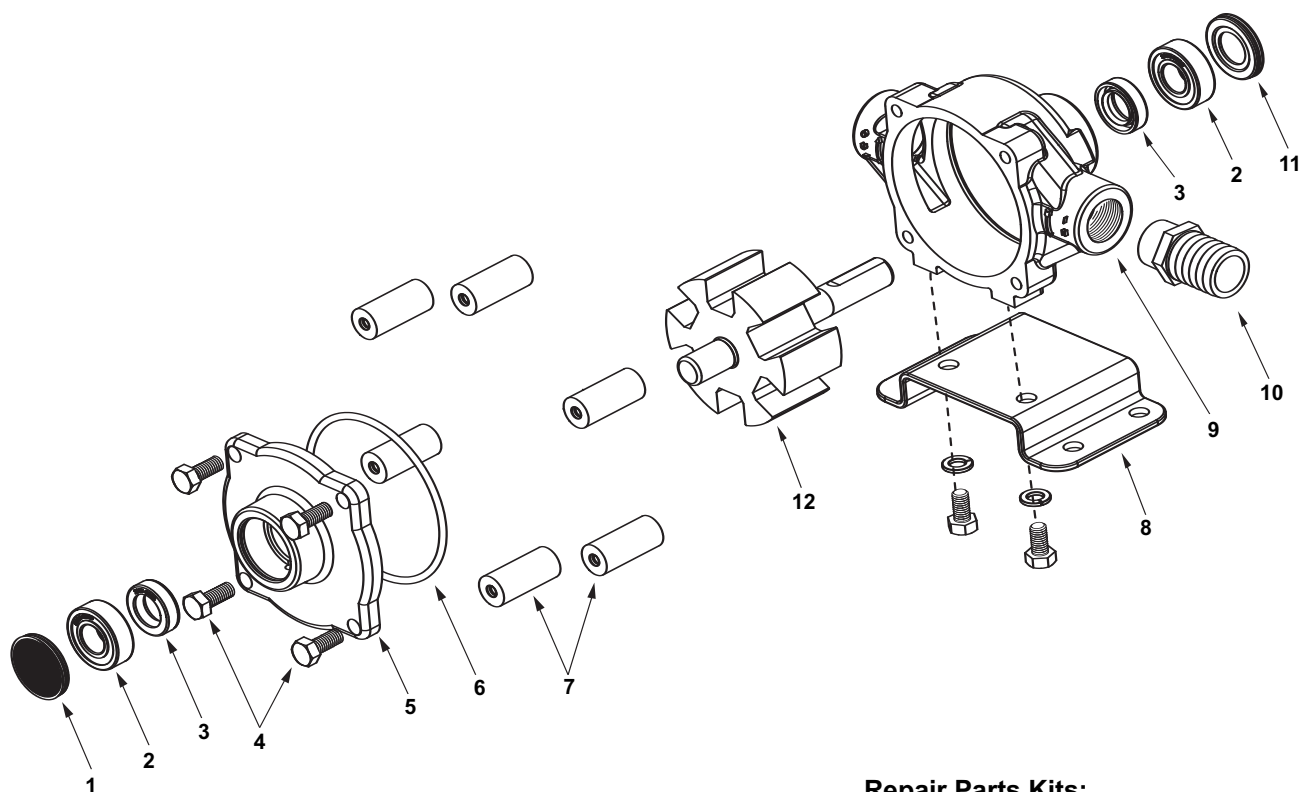
1. Check oil level in engine, use 10W30. Unleaded gasoline.
2. Check oil level in the gear reduction, use (90W). Oil should be level with the side drain plug.
3. Connect pressurized water source to the inlet of the pump. It is recommended that the unit be pressure fed. For suction or gravity feed locate water within 8 feet, you may need to prime the pump.
4. Connect the supplied high-pressure outlet hose to the pump and your test environment.

**OPERATING THE PUMP:**

1. Turn the outlet ballvalve to the open position, and start the engine. The engine RPM is preset at the factory, **DO NOT ADJUST**.
2. The pressure regulator has been preset at the factory. **To change this setting you must make this adjustment while the water is flowing freely, and under NO pressure.** To adjust the pressure, first loosen the locknut. Turn the T-handle/Knob clockwise to increase and counterclockwise to decrease the pressure. Place a ballvalve or similar open and close valve at the end of the outlet hose, open and close this valve multiple times as needed, to check pressure setting and re-adjust as necessary. It is also recommended that you open and close the hosebib located under the gauge to bleed excess air from piping and ensure accurate pressure gauge readings. Upon reaching desired pressure setting, tighten locknut and prepare to begin test.
3. With the ballvalve open begin building pressure in the test environment. Be sure to bleed the air from hosebib under gauge at least once during this process. Once test pressure has been reached, **close the ballvalve and shut-off engine.**
4. Once the outlet ballvalve is closed and your test begins, you have now isolated the test pump from the test environment, any loss of pressure is due to leaks or trapped air being compressed in the test environment.

**RECOMMENDED PERIODIC MAINTENANCE PROCEDURE**

1. Change engine(10W30) and gear reduction (90W) after the first 5 hours of operation thereafter every 80 hours of use or every season.
2. **PISTON PUMPS ONLY** -Lubricate cam bearing with grease (wheel bearing grease) every 100 hours of operation or monthly. Use hand operated grease gun to prevent damage to the bearing seal. Grease fitting assembly is located behind the safety cover on the pump.



**IMPORTANT:**

When ordering parts, give PART NUMBER and PART DESCRIPTION. Reference Numbers are used ONLY to point out parts in the drawing and are NOT to be used as ordering numbers.

**Repair Parts Kits:**

**No. 3430-0380** Consists of (6) Ref. 7 Super Rollers, (1) Ref. 6 O-ring, and (2) Ref. 3 Viton seals.

**No. 3430-0175** Consists of (6) Ref. 7 Polypropylene Rollers, (1) Ref. 6 O-ring, and (2) Ref. 3 Viton seals.

| Ref. No. | Qty. Req'd. | Part Number | Description                          |
|----------|-------------|-------------|--------------------------------------|
| 1        | 1           | 2300-0021   | Bearing Cover                        |
| 2        | 2           | 2000-0010   | Sealed Ball Bearing                  |
| 3        | 2           | 2107-0002   | Viton Seal (Standard)                |
| 3        | 2           | 2102-0001   | Buna-N Seal (Optional)               |
| 3        | 2           | 2102-0001T  | Teflon-coated Buna-N Seal (Optional) |
| 4        | 4           | 2210-0004   | Bolts                                |
| 5        | 1           | 0200-6600C  | Endplate (Cast Iron) with Seal       |
| 5        | 1           | 0200-6600N  | Endplate (Ni-Resist) with Seal       |
| 5        | 1           | 0200-6600X  | Endplate (SilverCast) with Seal      |
| 6        | 1           | 1720-0008   | O-ring Gasket for Endplate           |
| 7        | 6           | 1005-0004   | Super Roller (Standard)              |
| 7        | 6           | 1002-0004   | Polypropylene Roller (Optional)      |
| 7        | 6           | 1055-0004   | Teflon Roller (Optional)             |

| Ref. No. | Qty. Req'd. | Part Number | Description  |
|----------|-------------|-------------|--|
| 8        | 1 kit       | 3420-0023   | Base Kit - <b>Sold Separately</b><br>Includes: (1) Base, (2) Bolts and (2) Washers |
| 9        | 1           | 0100-6600C  | Body (Cast Iron) with Seal   |
| 9        | 1           | 0100-6600N  | Body (Ni-Resist) with Seal   |
| 9        | 1           | 0100-6600X  | Body (SilverCast) with Seal  |
| 10       | 1           | 2404-0052   | 1" Hose Barb   |
| 11       | 1           | 2300-0023   | Shaft Bearing Cover  |
| 12       | 1           | 0300-6600C  | Rotor Assembly (Cast Iron)   |
| 12       | 1           | 3430-0767   | Rotor Assembly (Std. Ni-Resist & XL)   |

PARTS BREAKDOWN FOR MODEL RP-SERIES  
RICE HYDRO INC.

PUMP PARTS:

| REF# | PART NUMBER      | DESCRIPTION                      | QTY<br>REQ'D |
|------|------------------|----------------------------------|--------------|
| 1    | HYPRO-2300-0021  | BEARING COVER                    | 1            |
| 2    | HYPRO-2000-0010  | SEALED BALL BEARING              | 2            |
| 3    | HYPRO-2107-0002  | VITON SEAL                       | 2            |
| 4    | HYPRO-2210-0004  | BOLTS                            | 4            |
| 5    | HYPRO-0200-6600N | END PLATE NI-RESIST W/SEAL       | 1            |
| 6    | HYPRO-1720-0008  | O-RING GASKET FOR ENDPLATE       | 1            |
| 7    | HYPRO-1002-0004  | POLYPROPYLENE ROLLER             | 6            |
| 8    | HYPRO-3420-0023  | (1) BASE, (2) BOLTS, (2) WASHERS | 1            |
| 9    | HYPRO-0100-6600N | BODY NI-RESIST WITH SEAL         | 1            |
| 11   | HYPRO-2300-0023  | SHAFT BEARING COVER              | 1            |
| 12   | HYPRO-3430-0767  | ROTOR ASSEMBLY (NI-RESIST)       | 1            |

MISCELLANEOUS PARTS:

|    |                      |                                  |   |
|----|----------------------|----------------------------------|---|
| NA | BRIGG-130G52-0182-F1 | 5.5 HP 206 CC ENGINE W/GR        | 1 |
| NA | HONDA-GX160UT2-HX2   | 5.5 HP 163 CC ENGINE W/GR        | 1 |
| NA | GAUGE-600            | 0-600 PSI LIQUID FILLED GAUGE    | 1 |
| NA | CENTERDISK-LVJ-AUGER | BUNA INSERT SPIDER DISC          | 1 |
| NA | COUPLING-LVJ-5/8     | 5/8" COUPLING (PUMP SIDE)        | 1 |
| NA | COUPLING-LVJ-3/4     | 3/4" COUPLING (ENGINE SIDE)      | 1 |
| NA | LINESTRAINER-3/4     | COMPLETE LINESTRAINER ASSEMBLY   | 1 |
| NA | HYPRO-6500N-RT3      | ROLLER PUMP 5 GPM UP TO 300 PSI  | 1 |
| NA | SPRAY-6815-300-3/4   | PRESSURE REGULATOR               | 1 |
| NA | BALLVALVE-3/4        | 3/4" BALLVALVE                   | 1 |
| NA | SWIVEL-3/4           | HOSE SWIVEL INLET                | 1 |
| NA | HOESCREEN&WASHER     | INLET HOSE SCREEN                | 1 |
| NA | KING-LARGE           | BOX STANDARD SIZED UNITS         | 1 |
| NA | LABEL-KIT-RP         | INSTRUCTION AND CAUTION STICKERS | 1 |
| NA | HOSE-3/4X8-RH        | 8' FOOT OUTLET HOSE - STANDARD   | 1 |
| NA | COUPLERBODY-3/4      | FEMALE PUMP OUTLET - HOSE        | 1 |
| NA | COUPLERPLUG-3/4      | MALE PUMP OUTLET - PIPING        | 1 |
| NA | HOSE-3/4-1250XFT     | SPECIFY LENGTH OF HOSE           |   |
| NA | FITTING-3/4-MPIPE    | FITTING FOR HOSE - RIGID         | 1 |
| NA | FITTING-3/4-MPX      | FITTING FOR HOSE - SWIVEL        | 1 |

KITS:

*\*KITS ARE ALL INCLUSIVE\**

|                  |   |
|------------------|---|
| HYPRO-3430-0175  | ROLLER REPAIR KIT:<br>(6) 1002-0004 POLYPROPYLENE ROLLERS<br>(1) 1720-0008 O-RING GASKET FOR END PLATE<br>(2) 2107-0002 VITON SEALS |
| SPRAY-AB6815-300 | PRESSURE REGULATOR REPAIR KIT   |