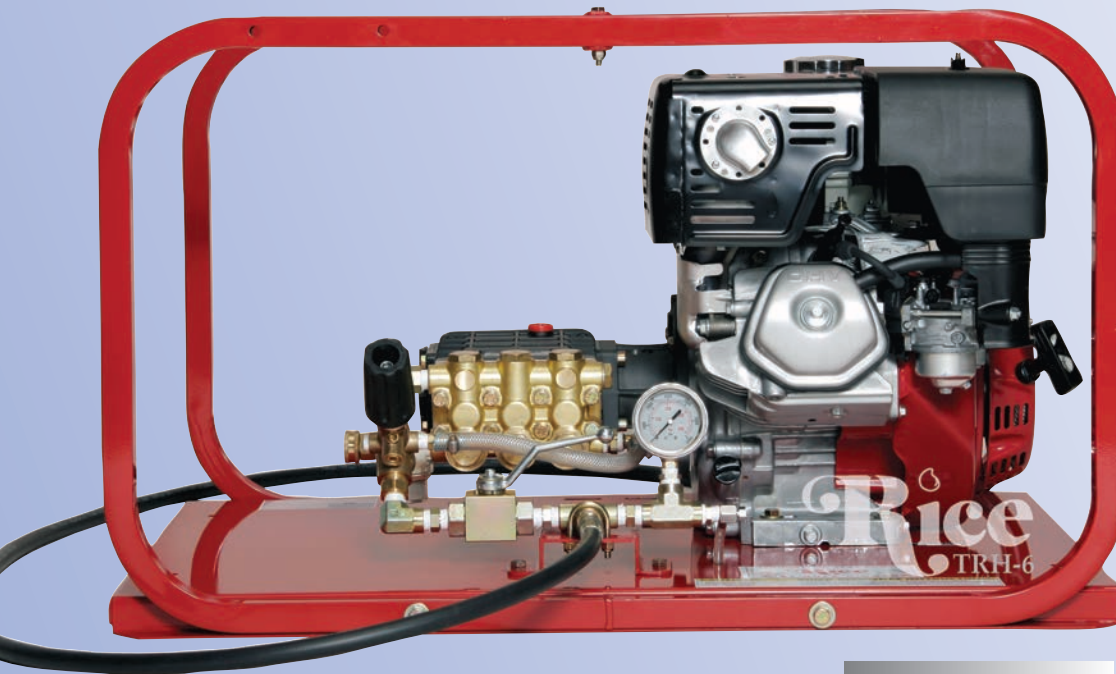


**HYDROSTATIC TEST PUMPS****Model TR-Series • Up to 5.5 GPM • 5000 PSI**

**T**he TR-Series are large volume, high pressure hydrostatic pumps.

Designed for testing boilers, vessels, process piping, steam and gas lines. The ceramic plunger pump, has an inner oil bath, ensuring long life and increased stability. Their high flow characteristics for pumps in this pressure range will speed testing as it quickly removes air from the test environment.

There are no external moving parts for operator safety and reduced liability risks. Virtually indestructible, the TR-Series is enclosed in a rugged roll cage of welded heavy gauge steel. These units are available with gas, diesel or electric power sources. Special order options available, pumps can be built to suit.

- **Automatic Pressure Regulator with Inlet Bypass**
- **Stainless Steel Liquid-Filled Gauge Ensure Accurate Readings, with Less Flutter**
- **Enclosed in a Rugged Roll Cage & Heavy Gauge Steel Base**
- **Stainless Steel Ballvalve to Isolate Pressure**



3500 Arrowhead Drive  
Carson City  
Nevada  
89706

web site:  
[www.ricehydro.com](http://www.ricehydro.com)

e-mail:  
[sales@ricehydro.com](mailto:sales@ricehydro.com)

Phone:  
(775) 885-1280

Fax:  
(800) 998-7423

T R S E R I E S						
Pump	TRH-2	TRE-6	TRH-8	TRE-8	TRH-10	TRD-8E
PSI	2000	2700	3600	3600	5000	3500
GPM	3	4	4	4	4.5	4
Inlet	3/4"	3/4"	3/4"	3/4"	3/4"	3/4"
Outlet	3/8"	3/8"	3/8"	3/8"	3/8"	3/8"
Motor/Engine	Honda 6.5 HP 163 CC	Baldor 7 1/2 HP 60 HZ	Honda 13 HP 389 CC	Baldor 10 HP 60 HZ	Honda 20 HP 614 CC	Diesel 7.3 KW 462 CC
Shipping Dimensions	25X21X17	35X25X19	35X25X19	35X25X19	35X25X21	35X25X21
Shipping Weight	120 LBS	255 LBS	177 LBS.	286 LBS	250 LBS	250 LBS
Options:	Engines: Briggs & Stratton, Honda or Diesel					
Motors:	Explosion proof, Variation in Hertz, Voltage and Phase					

**Hydrostatic Test Pumps • Post Hole Diggers • Shoring Pressure Pumps • Hand Pumps**

RICE HYDRO, INC. - MANUFACTURER'S OPERATING INSTRUCTIONS  
TR-SERIES MODEL TEST PUMPS  
**FOR WARRANTY REGISTRATION CALL: 1-800-245-4777**

**REMEMBER THESE CAUTIONS:**

1. **Electric Models** - Power source must meet voltage, phase, hertz and amperage requirements of electric motor, as stated on label. If an extension cord is used, requires at least 12 gauge 3 wire with maximum of 25 foot length.
2. Check all fluid levels prior to operating pump.
3. Use a sound 3/4" or larger supply hose.
4. DO NOT run dry or pump chlorine through the unit.
5. Protect the pump from freezing, FLUSH with anti-freeze.

**CONNECTING THE PUMP:**

1. Check oil level of engine as well as the oil level of pump thru sight glass, use 10W30 non-detergent as needed. **Electric Models** - With motor switch in the off position, connect power cord of motor to a standard wall outlet. Extension cord: when needed, requires a 12 gauge 3 wire, maximum 25 foot length plugged into a 20 or larger amp breaker, depending on individual motor requirements.
2. Connect **CLEAN** pressurized water source (minimum 3/4") to the inlet of the pump. It is recommended that the unit be pressure fed. For gravity feed locate water within 8 feet and above level of unit, and then prime the pump.
3. Connect high pressure outlet hose to the pump and your test environment.

**OPERATING THE PUMP:**

1. Turn the outlet ballvalve to the open position, begin water flow and start the engine. The engine RPM is preset at the factory, **DO NOT ADJUST!**
2. The pressure regulator has been preset at the factory. **To change this setting you must make this adjustment while the water is flowing freely, and under NO pressure.** To adjust the pressure, first loosen the locknut. Turn the T-handle/Knob clockwise to increase and counter-clockwise to decrease the pressure. Place a ballvalve or similar open and close valve at the end of the outlet hose, open and close this valve multiple times as needed, to check pressure setting and re-adjust as necessary. It is also recommended that you open and close the hosebib located under the gauge to bleed excess air from piping and ensure accurate pressure gauge readings. Upon reaching desired pressure setting, tighten locknut and prepare to begin test.
3. With the ballvalve open begin building pressure in the test environment. Be sure to bleed the air from hosebib under gauge at least once during this process. Once test pressure has been reached, **close the ballvalve and shut-off engine.**
4. Once the outlet ballvalve is closed and your test begins, you have now isolated the test pump from the test environment, any loss of pressure is due to leaks or trapped air being compressed in the test environment.

**RECOMMENDED PERIODIC MAINTENANCE PROCEDURE**

1. Plunger pump - Change oil in the pump body after first 50 hours of use, and every 250 hours thereafter. Change oil in the engine after first 5 hours of use, and every 80 hours thereafter.

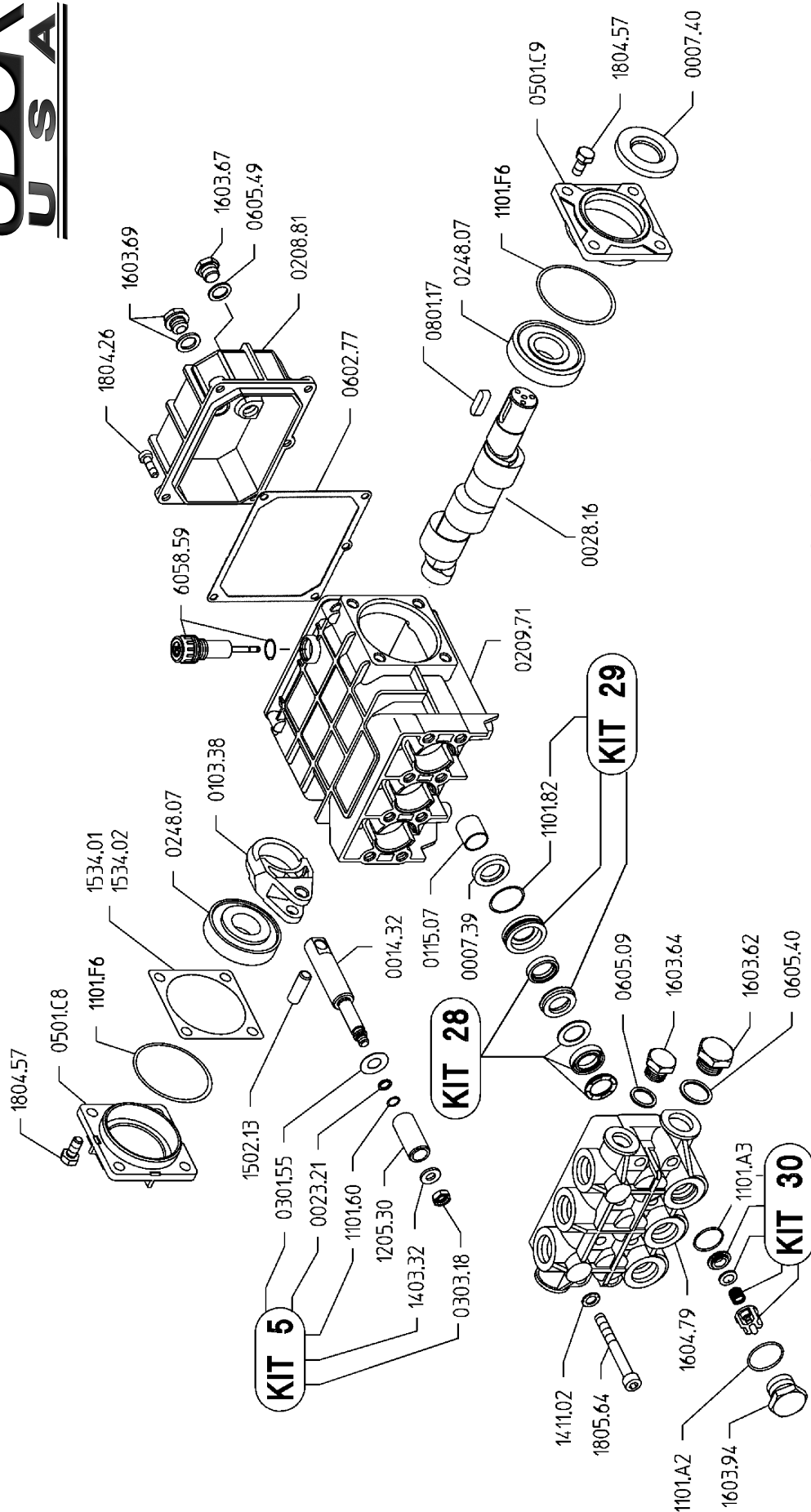


**WARNING:** Operating, servicing and maintaining this equipment can expose you to chemicals including engine exhaust, carbon monoxide and lead, which are known to the State of California to cause cancer and birth defects or other reproductive harm. To minimize exposure, avoid breathing exhaust, do not idle the engine except as necessary, operate and service your equipment in a well-ventilated area and wear gloves or wash your hands frequently when servicing your equipment. For more information go to: [www.p65warnings.ca.gov](http://www.p65warnings.ca.gov)

# MKD 4.0/40-S

Revised 10-1-2005

# UDOR<sup>®</sup> U S A



## MKD 4.0/40-S Quick Reference

Maximum Flow .....	4.0 GPM	Valve Kit .....	04-KIT UD-30
Maximum Pressure .....	4000 PSI	Seal Kit .....	04-KIT UD-28
Rated Pump Speed .....	1750 RPM	Brass Kit .....	04-KIT UD-29
Oil Capacity .....	28 oz. UDOR LUBE or SAE 30W Non-Detergent Oil	Plunger Bolt Kit .....	04-KIT UD-5
		Plunger Part # .....	04-1205.30
		Plunger Diameter .....	18 MM

## MKD 4.0/40-S

PARTS BREAKDOWN FOR MODELS TRE8/TRE8-XP  
RICE HYDRO, INC.

PART NUMBER..	DESCRIPTION..	QTY REQ'D
UD04-0007.39	SEAL	3
UD04-0007.40	SEAL	1
UD04-0014.32	PLUNGER ROD	3
UD04-0023.21	SUPPORT RING	3
UD04-0028.16	CRANKSHAFT	1
UD04-0103.38	BRONZE CONNECTING ROD	3
UD04-0115.07	ROD GUIDE	3
UD04-0208.81	BACK COVER	1
UD04-0209.71	CRANKCASE	1
UD04-0248.07	BEARING	2
UD04-0301.55	SLINGER RING	3
UD04-0303.18	PLUNGER NUT	6
UD04-0501.C9	BEARING CAP	1
UD04-0602.77	GASKET	1
UD02-0605.09	GASKET	1
UD04-0605.49	WASHER	1
UD04-0801.17	KEY	1
UD04-1101.A2	O-RING	6
UD04-1101.A3	O-RING	6
UD04-1101.A4	O-RING	6
UD04-1101.F6	O-RING	2
UD04-1101.60	O-RING	3
UD04-1101.82	O-RING	6
UD04-1205.30	PLUNGER 18MM	3
UD04-1403.32	PLUNGER WASHER	3
UD04-1411.02	WASHER	12
UD04-1502.13	CONNECTING ROD PIN	3
UD04-1534.01	SHIM .003	1
UD04-1534.02	SHIM .010	1
UD04-1603.64	DISCHARGE PLUG - 3/8"	1
UD02-1603.67	DRAIN PLUG	1
UD04-1603.69	SIGHT GLASS	1
UD04-1603.94	VALVE CAP MKC SERIES	6
UD04-1604.79	MANIFOLD	1
UD04-1804.26	BOLT	4
UD02-1804.57	BOLT	4
UD04-1805.64	BOLT	8
UD04-6058.59	DIPSTICK	1
MISCELLANEOUS PARTS..		
PUMP-4.0/40-S	TRIPLEX PLUNGER PUMP	1
MOTOR-10HP-TRE8	10HP 60HZ 3PH C-FACE MOTOR	1
MOTOR-TRE8XP	10HP 60HZ 3PH EXPLOSION PROOF	1
UNLOADER-500/4000PSI	PRESSURE REGULATOR	1
NEEDLEVALVE-1/4	BLEED VALVE	1
BALLVALVE-7250-3/8	OUTLET BALLVALVE	1
GAUGE-4000	0-4000 PSI LIQUID GAUGE	1
LABEL-KIT-TR	INSTRUCTION AND CAUTION STICKERS	1
LINESTRAINER-1/2	INLET LINE STRAINER	1
HOSE-3/8-5000X8-RH		
COUPLERPLUG-S-3/8	8' FOOT OUTLET HOSE - STANDARD	1
COUPLERBODY-S-3/8	MALE PUMP OUTLET - PIPING	1
FITTING-3/8-MPIPE	FEMALE PUMP OUTLET - HOSE	1
FITTING-3/8-MPX	FITTING FOR HOSE - RIGID	1
HOSE-HYD-3/8HP	FITTING FOR HOSE - SWIVEL	1
	SPECIFY LENGTH OF HOSE	
KITS..		
UD04-KIT-UD5	*KITS ARE ALL INCLUSIVE*	
UD04-KIT-UD28	PLUNGER BOLT KIT	
UD04-KIT-UD29	SEAL KIT	
UD04-KIT-UD30	BRASS KIT	
	VALVE KIT	