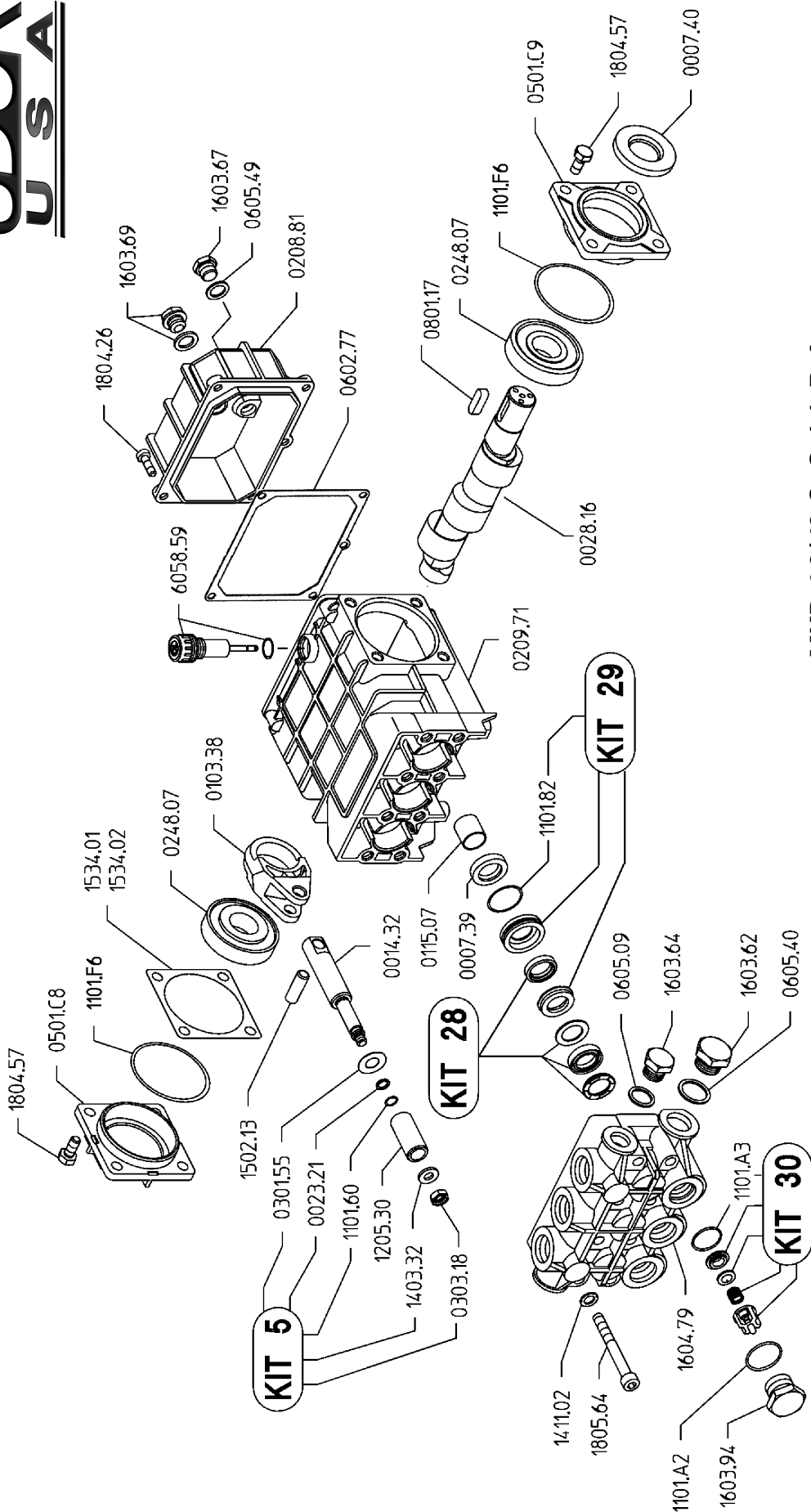
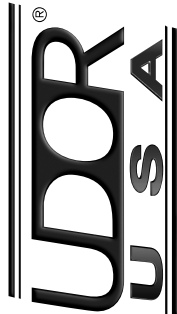


PARTS BREAKDOWN FOR MODELS TRE8/TRE8-XP  
RICE HYDRO, INC.

PART NUMBER..	DESCRIPTION..	QTY REQ'D
UD04-0007.39	SEAL	3
UD04-0007.40	SEAL	1
UD04-0014.32	PLUNGER ROD	3
UD04-0023.21	SUPPORT RING	3
UD04-0028.16	CRANKSHAFT	1
UD04-0103.38	BRONZE CONNECTING ROD	3
UD04-0115.07	ROD GUIDE	3
UD04-0208.81	BACK COVER	1
UD04-0209.71	CRANKCASE	1
UD04-0248.07	BEARING	2
UD04-0301.55	SLINGER RING	3
UD04-0303.18	PLUNGER NUT	6
UD04-0501.C9	BEARING CAP	1
UD04-0602.77	GASKET	1
UD02-0605.09	GASKET	1
UD04-0605.49	WASHER	1
UD04-0801.17	KEY	1
UD04-1101.A2	O-RING	6
UD04-1101.A3	O-RING	6
UD04-1101.A4	O-RING	6
UD04-1101.F6	O-RING	2
UD04-1101.60	O-RING	3
UD04-1101.82	O-RING	6
UD04-1205.30	PLUNGER 18MM	3
UD04-1403.32	PLUNGER WASHER	3
UD04-1411.02	WASHER	12
UD04-1502.13	CONNECTING ROD PIN	3
UD04-1534.01	SHIM .003	1
UD04-1534.02	SHIM .010	1
UD04-1603.64	DISCHARGE PLUG - 3/8"	1
UD02-1603.67	DRAIN PLUG	1
UD04-1603.69	SIGHT GLASS	1
UD04-1603.94	VALVE CAP MKC SERIES	6
UD04-1604.79	MANIFOLD	1
UD04-1804.26	BOLT	4
UD02-1804.57	BOLT	4
UD04-1805.64	BOLT	8
UD04-6058.59	DIPSTICK	1
 MISCELLANOUS PARTS..		
PUMP-4.0/40-S	TRIPLEX PLUNGER PUMP	1
MOTOR-10HP-TRE8	10HP 60HZ 3PH C-FACE MOTOR	1
MOTOR-TRE8XP	10HP 60HZ 3PH EXPLOSION PROOF	1
UNLOADER-500/4000PSI	PRESSURE REGULATOR	1
NEEDLEVALVE-1/4	BLEED VALVE	1
BALLVALVE-7250-3/8	OUTLET BALLVALVE	1
GAUGE-4000	0-4000 PSI LIQUID GAUGE	1
LABEL-KIT-TR	INSTRUCTION AND CAUTION STICKERS	1
LINESTRAINER-1/2	INLET LINE STRAINER	1
 HOSE-3/8-5000X8-RH		
COUPLERPLUG-S-3/8	8' FOOT OUTLET HOSE - STANDARD	1
COUPLERBODY-S-3/8	MALE PUMP OUTLET - PIPING	1
FITTING-3/8-MPIPE	FEMALE PUMP OUTLET - HOSE	1
FITTING-3/8-MPX	FITTING FOR HOSE - RIGID	1
HOSE-HYD-3/8HP	FITTING FOR HOSE - SWIVEL	1
	SPECIFY LENGTH OF HOSE	
 KITS..		
	*KITS ARE ALL INCLUSIVE*	
UD04-KIT-UD5	PLUNGER BOLT KIT	
UD04-KIT-UD28	SEAL KIT	
UD04-KIT-UD29	BRASS KIT	
UD04-KIT-UD30	VALVE KIT	

Revised 10-1-2005

# MKD 4.0/40-S



## MKD 4.0/40-S Quick Reference

Maximum Flow .....	4.0 GPM	Valve Kit .....	04-KIT UD-30
Maximum Pressure .....	4000 PSI	Seal Kit .....	04-KIT UD-28
Rated Pump Speed .....	1750 RPM	Brass Kit .....	04-KIT UD-29
Oil Capacity .....	28 oz. UDOR LUBE or SAE 30W	Plunger Bolt Kit .....	04-KIT UD-5
	Non-Detergent Oil	Plunger Part # .....	04-1205.30
		Plunger Diameter .....	18 MM

**MKD 4.0/40-S**