

PARTS BREAKDOWN FOR MODEL FH2-SERIES
RICE HYDRO, INC.

PART NUMBER..	DESCRIPTION..	QTY REQ'D
UD04-0006.09	BEARING	1
UD04-0007.18	SEAL	3
UD04-0007.24	SEAL	1
UD04-0009.09	RETAINER CLIP	1
UD04-0014.20	PLUNGER ROD	3
UD04-0023.22	SUPPORT RING	3
UD04-0031.85	CRANKSHAFT	1
UD04-0103.45	BRONZE CONNECTING ROD	3
UD04-0208.70	BEARING COVER	1
UD04-0208.72	BACK COVER	1
UD04-0209.56	CRANKCASE	1
UD04-0214.21	BEARING	1
UD04-0301.42	SLINGER RING	3
UD04-0303.18	PLUNGER NUT	3
UD04-0517.07	FLANGE	1
UD04-0602.76	GASKET/O-RING	1
UD04-0605.33	PLUNGER WASHER	3
UD04-0605.49	WASHER	1
UD04-1101.A2	O-RING	6
UD04-1101.A3	VALVE O-RING	6
UD04-1101.A4	O-RING	3
UD04-1101.A6	O-RING	1
UD04-1101.A7	O-RING	3
UD04-1205.35	PLUNGER 15 MM	3
UD04-1212.10	SIDE PLATE	1
UD04-1411.01	WASHER	12
UD04-1502.15	CONNECTING ROD PIN	3
UD04-1506.26	SNAP RING	1
UD02-1603.67	OIL PLUG	1
UD04-1603.69	SIGHT GLASS	1
UD04-1603.72	VALVE CAP	6
UD04-1604.59	MANIFOLD	1
UD04-1805.19	BOLT	4
UD04-1805.20	BOLT	8
UD04-1805.39	BOLT	8
UD04-6058.26	OIL VENT CAP	1

MISCELLANEOUS PARTS..

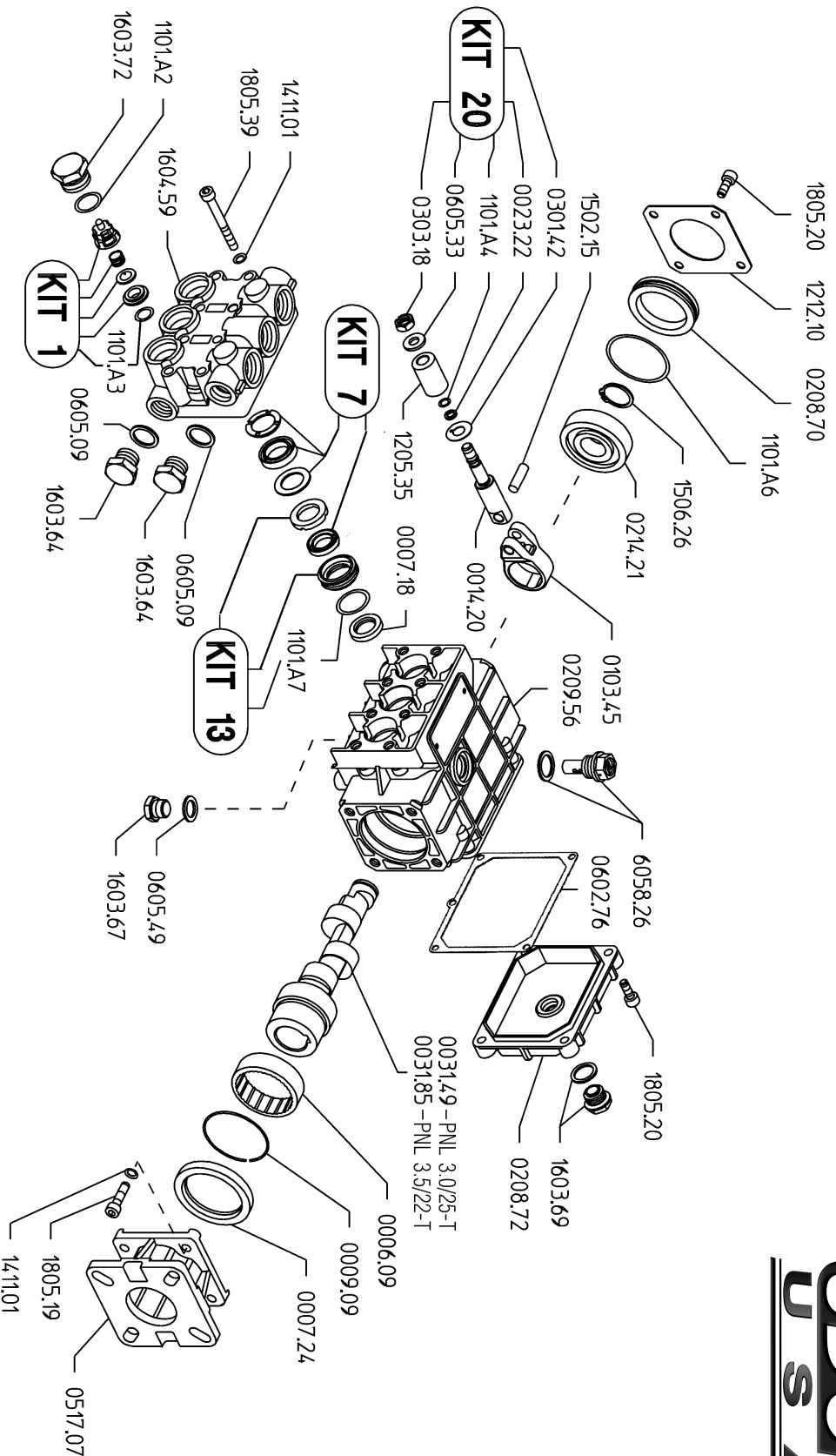
BRIGG-130G32-0022-F1	5.5 HP 206 CC FLANGE MOUNT	1
HONDA-GX200UT2-QX2	6.5 HP 196 CC FLANGE MOUNT	1
SPEC-PNL3.5/22-T	TRIPLEX PLUNGER PUMP	1
GAUGE-1500	0-1500 PSI LIQUID FILLED GAUGE	1
VALVE-RELIEF-900PSI	PRESSURE REGULATOR	1
HOSE-1/2X2-RH	FH SERIES HOSE	1
CHECKVALVE-1/2F	1/2" FEMALE CHECKVALVE	1
BALLVALVE-HP-1/2	1/2" BLEED VALVE	1
BALLVALVE-S-1&1/2	STAINLESS STEEL BALLVALVE	5
SWIVEL-INLET-FH3	2&1/2" FEMALE SWIVEL INLET	1
ADAPTER-NST-1&1/2	1&1/2" NPT X NST OUTLET ADAPTER	4
ADAPTER-NST-2&1/2	2&1/2" NPT X NST OUTLET ADAPTER	4
CASTER-RIGID-4	4" RIGID CASTER	2
CASTER-SWIVEL-4	4" SWIVEL CASTER	2
LABEL-KIT-FH	INSTRUCTION AND CAUTION STICKERS	1

KITS:

KITS ARE ALL INCLUSIVE

UD04-KIT-UD1	VALVE KIT	1
UD04-KIT-UD7	SEAL KIT	1
UD04-KIT-UD13	BRASS RETAINER KIT 15 MM	1
UD04-KIT-UD20	PLUNGER / O-RING KIT 15 MM	1

PNL 3.0/25-T & PNL 3.5/22-T



PNL 3.0/25-T & PNL 3.5/22-T Quick Reference

Max. Flow	PNL 3.0/25-T ..3.0 GPM	Valve Kit	04-KIT UD-1
	PNL 3.5/22-T ..3.5 GPM	Seal Kit	04-KIT UD-7
Max. Pressure	PNL 3.0/25-T ..2500 PSI	Brass Kit	04-KIT UD-13
	PNL 3.5/22-T ..2200 PSI	Plunger Bolt Kit	04-KIT UD-20
Rated Pump Speed3400 RPM	Plunger Part #	04-1205.35
Oil Capacity12 oz. UDOR LUBE or SAE 30W Non-Detergent Oil	Plunger Diameter	15 MM

PNL 3.0/25-T
PNL 3.5/22-T