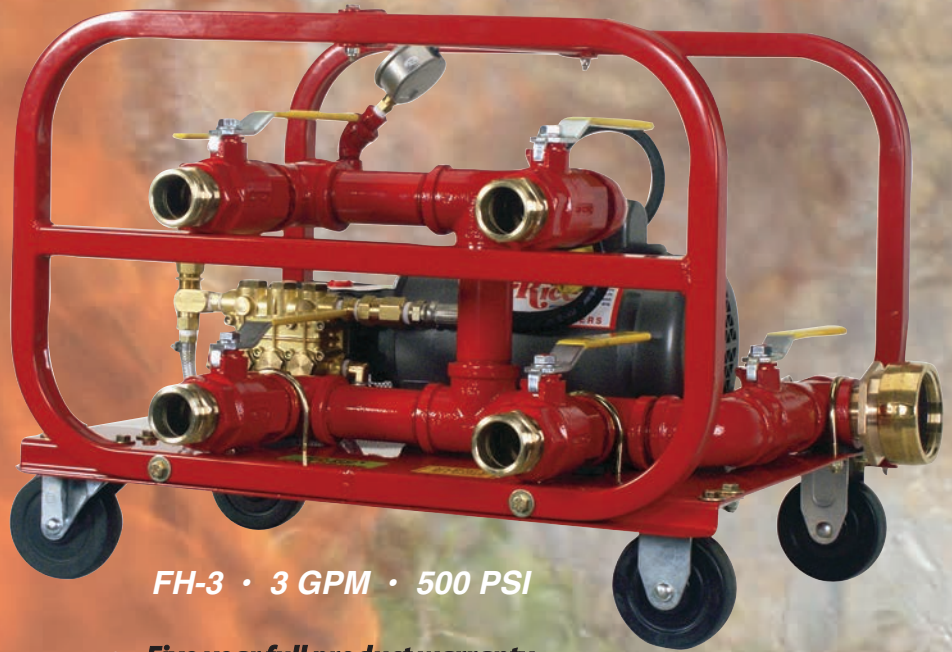


FH Series

FIRE HOSE TESTERS

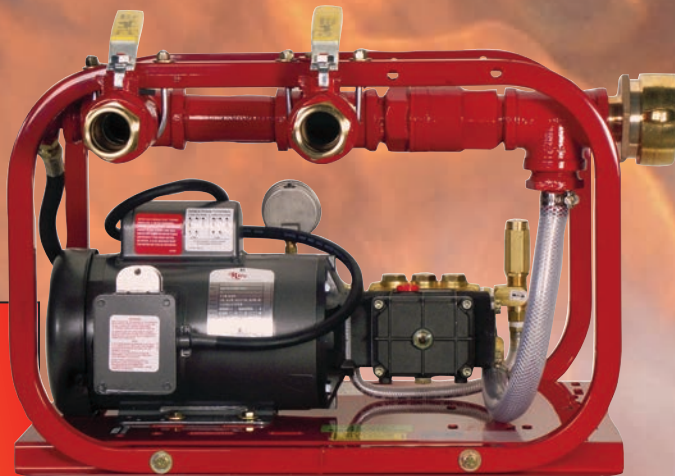
The FH-series line of fire hose testers, offers testing pressures up to 1,000 PSI, with flow rates up to 10 GPM. Gas, Electric, and Diesel driven models, designed to safely test fire hose up to 6" in diameter. A large 2 & 1/2" swivel inlet aids in the ability to quickly fill and bleed the fire hoses through the large 1 & 1/2" heavy duty manifold, with independently controlled stainless steel ballvalves. NO WILD LINES - unique to the RICE Hydro line of fire hose testers, a ballvalve strategically placed on the inlet piping allows the user to fill with "LARGE VOLUME at LOW PRESSURE" and test with "LOW VOLUME at HIGH PRESSURE", eliminating the elements that may cause wild lines. The FH-series hose testers, meet or exceed test standards set forth by the NFPA 1962. A safe, less costly and more efficient way to test your fire hose, keeping your pumper ready for action, where it should be!



FH-3 • 3 GPM • 500 PSI

- **Five year full product warranty**
- **Up to Ten Independently Controlled Outlets, 1 & 1/2" Stainless Steel Ballvalves, with NST Couplings**
- **Stainless Steel Liquid-Filled Gauge Ensures Accurate Readings, with Less Flutter**
- **Rugged Roll Cage Construction Protects Pump From Damage**

MINI HOSE TESTER EL-FHT



EL-FHT • 3 GPM • 500 PSI

- **Two Independently Controlled Outlets, 1 & 1/2" Stainless Steel Ball valves, with NST Couplings**
- **1 HP 50/60 Hz Electric Motor with MTO, and TEFC**
- **Dual Swivel Inlets: 2 & 1/2" NST and 3/4" GHT.**
- **Liquid Filled Stainless Steel Gauge**

The EL-FHT is a mini hose tester with all the power and design of the FH-3, yet just half its size. Great for on board ships, inside factories and plants or any confined spaces.

MODEL	GPM	PSI	POWER
FH-3	3	500	ELECTRIC
EL-FHT	3	500	ELECTRIC
FH-5(B) (H)	5	1000	GAS
FH5-E	5	800	ELECTRIC
FH4-E	4	1000	ELECTRIC
FH2-(B) (H)	3.5	1000	GAS
FH10-(B) (H)	10	450	GAS

www.ricehyd.com



3500 Arrowhead Drive
Carson City, Nevada
89706

web site:
www.ricehydro.com

e-mail:
sales@ricehydro.com

Toll Free U.S. & Canada:
(800) 245-4777

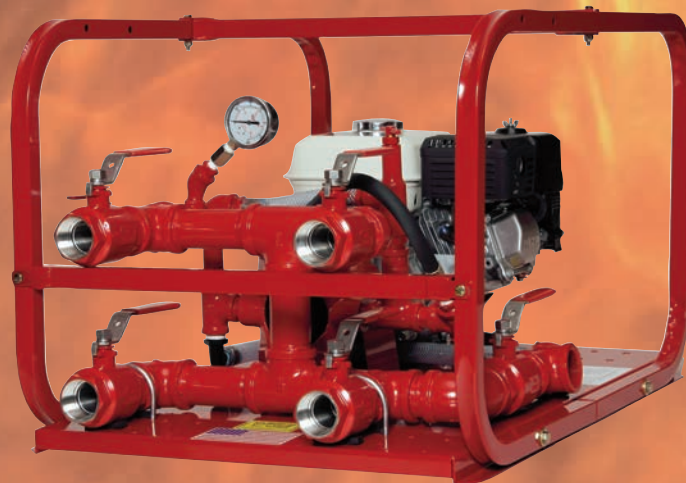
Phone:
(775) 885-1280

Fax:
(800) 998-7423

FH 10-H

Freedom and Versatility! The FH10-H is one of six gas models offered in the Rice Hydro line of fire hose testers. Excellent for testing requirements in rural and remote areas, or anywhere electricity is not readily available.

- **Shown with Honda engine, OHV, oil alert**
- **All units enclosed in a Rugged Steel Rollcage**
- **Increased speed and efficiency with higher GPM flow ratings**



FH10-H • 10 GPM • 450 PSI

FH-series Wand Accessory

Ideal for Haz-Mat and contaminated equipment wash down. Strong cleaning power at 500 psi, yet soft enough to offer less risk for damage of department decals or custom paint jobs. The FHWA-1 wand accessory makes your FH-series fire hose tester a year round contributor to your equipment fleet.



- **Dual Tips offer option of Spraying**
Either Water only or Soap & Water
- **50 Feet of High Pressure Hose for Long Range Mobility**
- **Quick Disconnects for Easy On/Off Capability**
- **Adjustable Injector for Soap or other Cleaning Solvents**
- **Steel Construction, with Nylon Tip Guards and Handle**



Keep'M Caged!
Safety Anchor &
Securement Device

The **LineCage**, a patented design, for safely securing and anchoring your fire hose during pressure testing.

RICE HYDRO, INC.
MANUFACTURER'S OPERATING INSTRUCTIONS
FIRE HOSE TESTER SERIES

FOR WARRANTY REGISTRATION CALL: 1-800-245-4777

CAUTIONS:

1. Power source must meet voltage, phase, hertz and amperage requirements of electric motor, as stated on label. If an extension cord is used, requires at least 12 gauge 3 wire with maximum of 25 foot length.
2. Check ALL fluid levels prior to operating the unit.
3. Protect the pump from freezing, FLUSH with anti-freeze.
4. DO NOT run dry or pump chlorine thru the unit.
5. **Supplying the unit with water, inlet pressure should not exceed 90 PSI.**

CONNECTING THE PUMP:

1. Check oil level of pump and engine (if gas unit), use 10W30 ND oil.
2. Connect inlet to fire hydrant.
3. Connect fire hose to be tested to suitable adapters on manifold outlets. Hose
4. Connect garden hose to back bleed & direct to a drain away for dry test area.
5. ASSURE MOTOR IS "OFF". Connect the power cord to a standard wall outlet.
Extension cord: when needed, a 12 gauge 3 wire, maximum 25 ft. length, plugged into a 20 amp breaker is required.

OPERATING THE PUMP:

1. Close all ballvalves, slightly crack open the 1/2" bleeder ballvalve.
2. Open inlet ballvalve. Open outlet ballvalves one at a time and allow each hose to be filled through manifold. Do not turn pump on at this time.
3. To ensure air is safely bled from hoses, bleed each hose, one line at a time with hydrant volume and pressure, utilizing a nozzle at the end of each hose.
4. When each line is filled, free of air, with nozzle closed, close the ballvalve at the manifold outlet to seal the line. Bleed **ALL** outlets whether or not in use for testing. All air must be removed.
5. With back bleed open, turn on the pump. This will bleed air out of the pressure side of the pump - out to the drain area.
6. **Close the 1&1/2" ballvalve at the inlet of manifold/unit, directing water flow from the hydrant to pressure side of pump. No pressure will build until this ballvalve is closed.**
7. Slowly close the 1/2" back bleed ballvalve, check the gauge to verify pressure setting of relief valve.
8. The pressure regulator has been preset at the factory. ***To change this setting you must make this adjustment while the water is flowing freely, and under NO pressure.*** To adjust the pressure, first loosen the locknut. Turn the T-handle/Knob clockwise to increase and counterclockwise to decrease the pressure. Place a ballvalve or similar open and close valve at the end of the outlet hose, open and close this valve multiple times as needed, to check pressure setting and re-adjust as necessary. Upon reaching desired pressure setting, tighten locknut and prepare to begin test.

9. Open the 1&1/2" ballvalves at the outlets and begin building pressure in all the lines. In the event there is an acceptable leak in the system that must be overcome by leaving the pump running.. Crack the 1/2" back bleed valve allowing a small amount of clean fresh water to flow while in bypass. **Once pressure has been reached, close all ballvalves and shut off pump.**
10. If the air has been bled as outlined, the pump will build pressure quickly and safely with only hose stretch to overcome. If a hose ruptures, the only volume of water available is through GPM of the pump. NO SURGE OF VOLUME, NO WILD LINE.
11. It is impossible to ensure that air is not caught behind couplings. If air is caught behind a coupling that fails - it could cause an explosion and fragmentary effect. DO NOT BEND OVER THE TOP OF THE PUMP. Treat hoses and couplings under pressure as dangerous.

NOTE: When dealing with existing pressured hoses or to re-pressurize hose,

TROUBLE SHOOTING:

NOT building pressure

Inlet ballvalve has not been closed.

AIR, AIR AND MORE AIR

**Ensure air is bled from hoses, manifold, piping.
The length of time to build pressure and test hoses is directly related to overcoming air buildup.**

Motor will not Run

Verify plugged directly into wall outlet, or using minimum 12 gauge 3 wire, maximum 25' extension cord. Push thermal overload button to reset.

GAUGE

Pegged or faulty, order new gauge.



WARNING: Operating, servicing and maintaining this equipment can expose you to chemicals including engine exhaust, carbon monoxide and lead, which are known to the State of California to cause cancer and birth defects or other reproductive harm. To minimize exposure, avoid breathing exhaust, do not idle the engine except as necessary, operate and service your equipment in a well-ventilated area and wear gloves or wash your hands frequently when servicing your equipment. For more information go to: www.p65warnings.ca.gov

PARTS BREAKDOWN FOR MODELS FH4-SERIES
RICE HYDRO, INC.

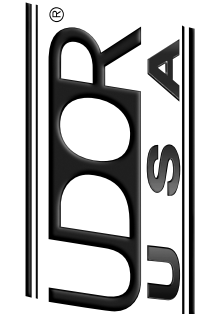
PART NUMBER..	DESCRIPTION..	QTY REQ'D
UD04-0007.39	SEAL	3
UD04-0007.41	SEAL	1
UD04-0009.08	SHAFT COLLAR	1
UD04-0014.32	PLUNGER ROD	3
UD04-0023.21	SUPPORT RING	3
UD04-0028.22	CRANKSHAFT	1
UD04-0103.39	ALUMINUM CONNECTING ROD	3
UD04-0115.07	ROD GUIDE	3
UD04-0208.69	BACK COVER	1
UD04-0209.71	CRANKCASE	1
UD04-0248.02	BEARING	1
UD04-0248.04	BEARING	1
UD04-0301.55	SLINGER RING	3
UD04-0303.18	PLUNGER NUT	3
UD04-0501.D9	BEARING CAP	1
UD04-0501.E1	BEARING CAP	1
UD04-0517.09	FLANGE	1
UD04-0602.77	GASKET BACK COVER	1
UD02-0605.09	GASKET	1
UD04-0605.40	GASKET	1
UD04-0605.49	WASHER	1
UD04-0614.15	SET SCREW	1
UD04-1101.A2	O-RING	6
UD04-1101.A3	O-RING	6
UD04-1101.F6	O-RING	2
UD04-1101.60	O-RING	3
UD04-1101.82	O-RING	3
UD04-1205.30	PLUNGER 18 MM	3
UD04-1403.32	PLUNGER WASHER	3
UD04-1411.02	WASHER	12
UD04-1502.13	CONNECTING ROD PIN	3
UD04-1534.01	SHIM .003	1
UD04-1534.02	SHIM .010	1
UD04-1603.60	VALVE CAP	6
UD04-1603.62	INLET PLUG 3/4"	1
UD04-1603.64	DISCHARGE PLUG 3/8"	1
UD02-1603.67	OIL PLUG	1
UD04-1603.69	OIL SIGHT GLASS	1
UD04-1604.58	MANIFOLD 18 MM	1
UD04-1804.02	BOLT	8
UD02-1804.18	BOLT	4
UD04-1804.26	BOLT	5
UD04-1804.57	BOLT	4
UD04-6058.59	OIL DIP STICK	1

MOTORS & PUMPS:

MOTOR-CL3619TM	3HP 60HZ 1PH 230V MOTOR (FH4E)	1
MOTOR-FH4EF-1PH	3HP 50HZ 1PH 230V MOTOR (FH4EF-1PH)	1
MOTOR-CFAC-FH4EF-1PH	C-FACE KIT FOR 50HZ 1PH MOTOR (FH4EF-1PH)	1
MOTOR-CM3611-T	3HP 60HZ 3PH 208/230/460V MOTOR (FH4E-3PH)	1
MOTOR-FH4EF-3PH	3HP 50HZ 3PH 110/220V MOTOR (FH4EF-3PH)	1
MOTOR-CFAC-FH3EF-3PH	C-FACE KIT FOR 50HZ 3PH MOTOR (FH4EF-3PH)	1
PUMP-MD4.0/20-U	TRIPLEX PLUNGER PUMP	1

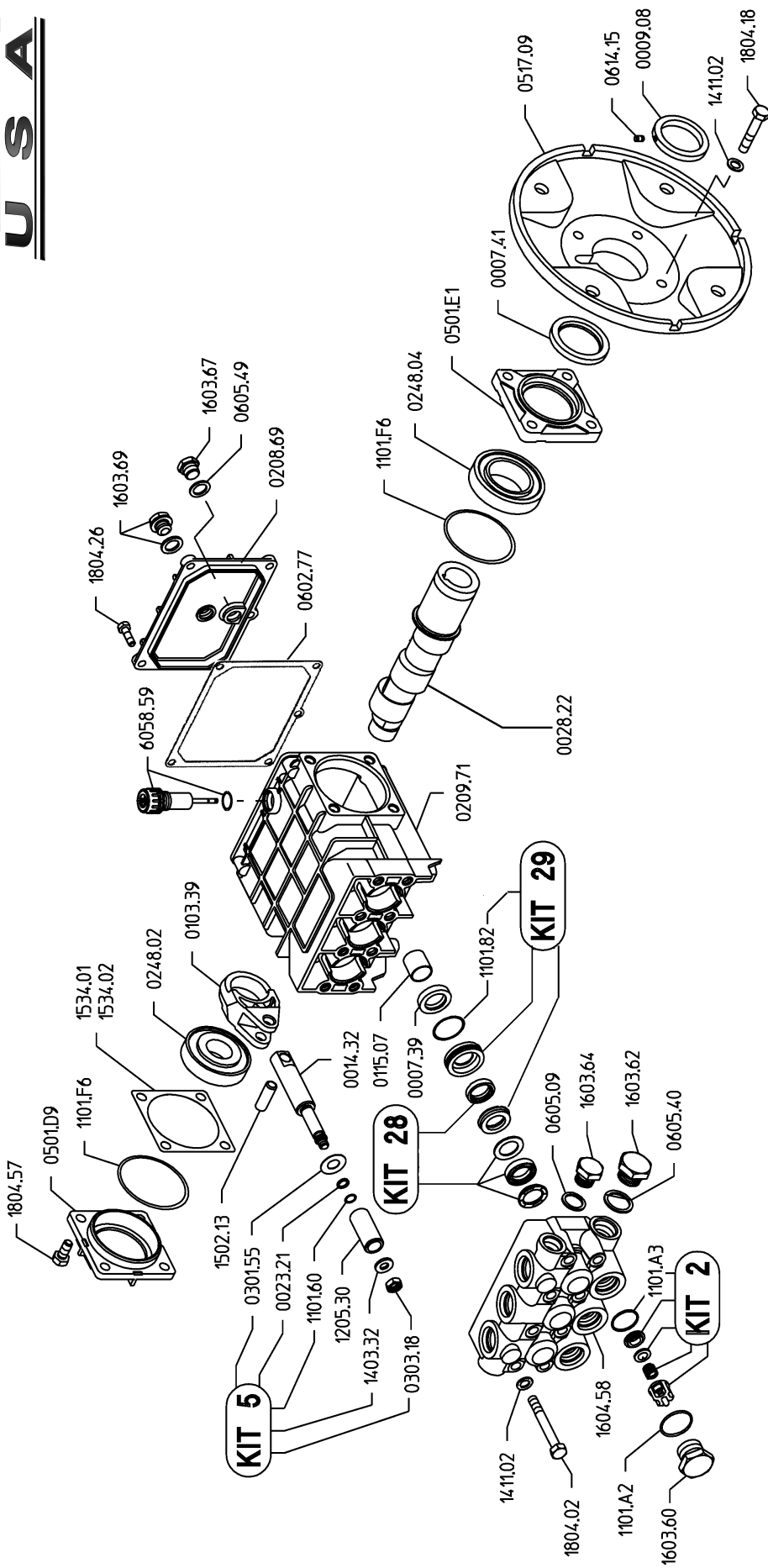
PARTS BREAKDOWN FOR MODELS FH4-SERIES
RICE HYDRO, INC.

PART NUMBER..	DESCRIPTION..	QTY REQ'D
MISCELLANEOUS PARTS..		
VALVE-RELIEF-2000PSI	PRESSURE REGULATOR	1
VALVE-RELIEF-900PSI	PRESSURE REGULATOR (FH3EF-3PH)	1
SWIVEL-INLET-FH3	2&1/2" FEMALE SWIVEL INLET	1
GAUGE-1500	0-1500 PSI LIQUID GAUGE	1
HOSE-1/2X2-RH	FH SERIES HOSE	1
CASTER-RIGID-4	4" RIGID CASTER	2
CASTER-SWIVEL-4	4" SWIVEL CASTER	2
CHECKVALVE-1/2F	1/2" FEMALE CHECKVALVE	1
BALLVALVE-HP-1/2	1/2" BLEEDVALVE	1
BALLVALVE-S-1&1/2	STAINLESS STEEL BALLVALVE	5
LABEL-KIT-FH	INSTRUCTION AND CAUTION STICKERS	1
KITS..		
	<i>*KITS ARE ALL INCLUSIVE*</i>	
UD04-KIT-UD2	VALVE KIT	1
UD04-KIT-UD5	PLUNGER BOLT KIT	1
UD04-KIT-UD28	SEAL KIT	1
UD04-KIT-UD29	BRASS KIT	1
ADAPTERS & ACCESSORIES..		
ADAPTER-NST-1&1/2"	1&1/2" NPT X NST OUTLET ADAPTER	4
ADAPTER-NST-2&1/2"	2&1/2" NPT X NST OUTLET ADAPTER	4
FHWA	PRESSURE WAND ACCESSORY	1
LINECAGE-1	SAFETY ANCHOR DEVICE	1



MD 4.0/20-U & MD 4.0/30-U

Revised 10-1-2005



MD 4.0/20-U & MD 4.0/30-U Quick Reference

Maximum Flow	4.0 GPM	Valve Kit	04-KIT UD-2
Max. Pressure MD 4.0/20-U ...	2000 PSI	Seal Kit	04-KIT UD-28
MD 4.0/30-U ...	3000 PSI	Brass Kit	04-KIT UD-29
Rated Pump Speed	1750 RPM	Plunger Bolt Kit	04-KIT UD-5
Oil Capacity	20 oz. UDOR LUBE	Plunger Part #	04-1205.30
or SAE 30W Non-Detergent Oil		Plunger Diameter	18 MM

MD 4.0/20-U
MD 4.0/30-U