

PARTS BREAKDOWN FOR MODEL FH5E-SERIES
RICE HYDRO, INC.

| PART NUMBER.. | DESCRIPTION.. | QTY REQ'D |
|---------------|-------------------------|--------------|
| UD04-0007.39 | SEAL | 6 |
| UD04-0007.41 | SEAL | 1 |
| UD04-0014.32 | PLUNGER ROD | 3 |
| UD04-0023.21 | SUPPORT RING | 3 |
| UD04-0028.23 | CRANKSHAFT | 1 |
| UD04-0103.39 | ALUMINUM CONNECTING ROD | 3 |
| UD04-0115.07 | ROD GUIDE | 6 |
| UD04-0208.69 | BACK COVER | 1 |
| UD04-0209.71 | CRANKCASE | 1 |
| UD04-0248.02 | BEARING | 1 |
| UD04-0248.04 | BEARING | 1 |
| UD04-0301.55 | SLINGER RING | 3 |
| UD04-0303.18 | PLUNGER NUT | 3 |
| UD04-0501.D9 | BEARING COVER | 1 |
| UD04-0501.E1 | BEARING CAP | 1 |
| UD04-0517.09 | FLANGE | 1 |
| UD04-0602.77 | GASKET BACK COVER | 1 |
| UD02-0605.09 | ALUMINUM WASHER | 1 |
| UD04-0605.49 | WASHER | 1 |
| UD04-1101.A2 | O-RING | 6 |
| UD04-1101.A3 | O-RING | 6 |
| UD04-1101.F6 | O-RING | 2 |
| UD04-1101.60 | O-RING | 3 |
| UD04-1101.82 | O-RING | 3 |
| UD04-1205.30 | PLUNGER 18 MM | 3 |
| UD04-1403.32 | PLUNGER WASHER | 3 |
| UD04-1411.02 | WASHER | 8 |
| UD04-1502.13 | CONNECTING ROD PIN | 3 |
| UD04-1534.01 | SHIM .003 | 1 |
| UD04-1534.02 | SHIM .010 | 1 |
| UD04-1603.60 | VALVE CAP | 6 |
| UD04-1603.64 | DISCHARGE PLUG 3/8" | 1 |
| UD02-1603.67 | OIL DRAIN PLUG | 1 |
| UD04-1603.69 | OIL SIGHT GLASS | 1 |
| UD04-1604.58 | MANIFOLD 18 MM | 1 |
| UD04-1804.02 | BOLT | 8 |
| UD02-1804.18 | BOLT | 4 |
| UD04-1804.26 | BOLT | 4 |
| UD04-1804.57 | BOLT | 4 |
| UD04-6058.59 | OIL DIP STICK | 1 |

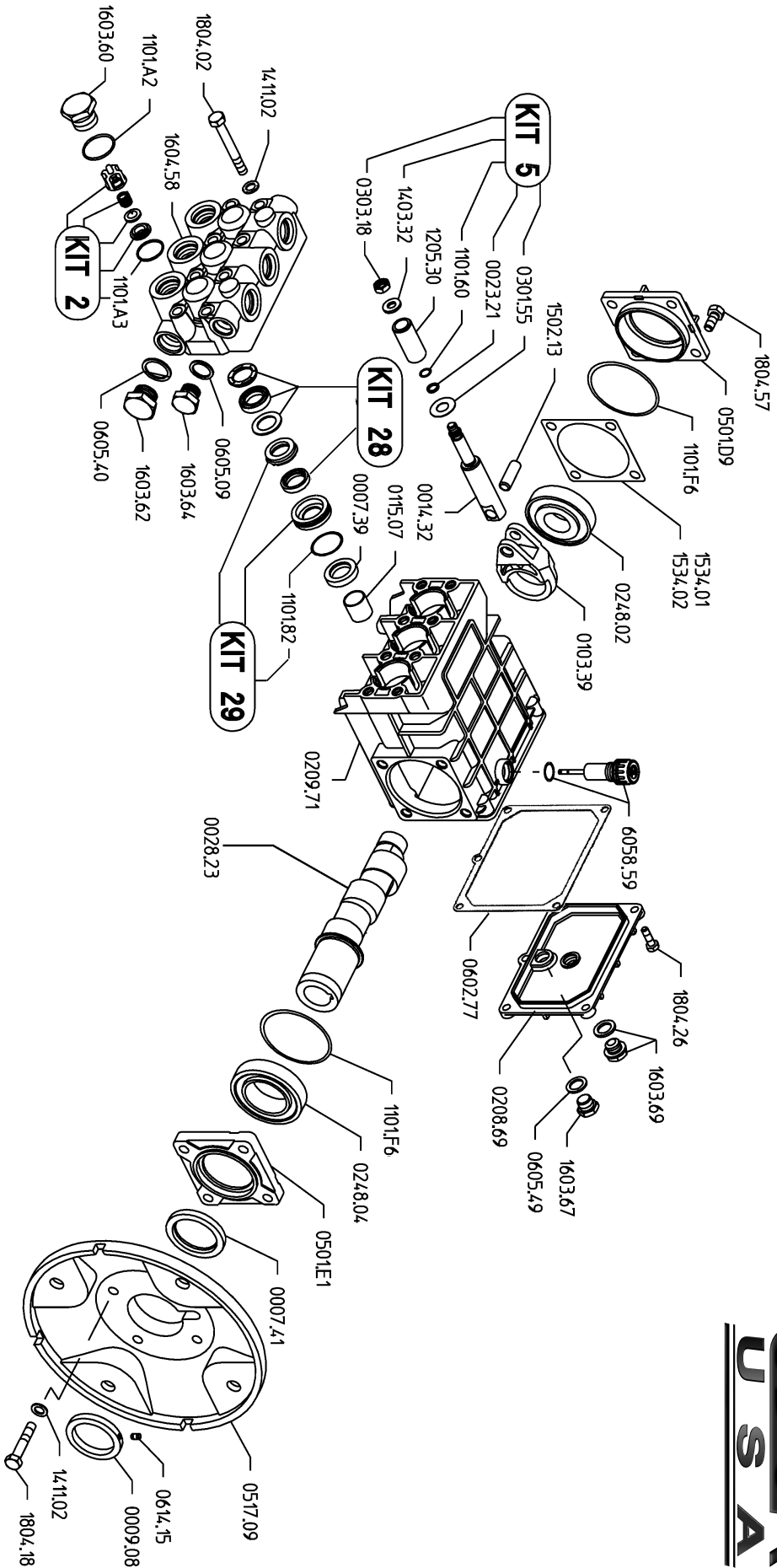
MISCELLANEOUS PARTS:

| | | |
|---------------------|----------------------------------|---|
| MOTOR-FH4E-FH5E | 3HP 60HZ 1PH 110/220V MOTOR | 1 |
| MOTOR-CEM7042T | 3HP 60HZ 3PH EXPLOSION PROOF | 1 |
| PUMP-5/800/E | PLUNGER PUMP | 1 |
| VALVE-RELIEF-900PSI | PRESSURE REGULATOR | 1 |
| HOESWIVEL-1/2 | HOSE SWIVEL INLET | 1 |
| GAUGE-1500 | 0-1500 LIQUID FILLED GAUGE | 1 |
| CHECKVALVE-1/2F | 1/2" FEMALE CHECKVALVE | 1 |
| SWIVEL-INLET-FH3 | 2&1/2" FEMALE SWIVEL INLET | 1 |
| CASTER-RIGID-4 | 4" RIGID CASTER | 2 |
| CASTER-SWIVEL-4 | 4" SWIVEL CASTER | 2 |
| BALLVALVE-HP-1/2 | 1/2" BLEEDVALVE | 1 |
| BALLVALVE-S-1&1/2 | STAINLESS STEEL BALLVALVE | 5 |
| LABEL-KIT-FH | INSTRUCTION AND CAUTION STICKERS | 1 |

PARTS BREAKDOWN FOR MODEL FH5E-SERIES
RICE HYDRO, INC.

| PART NUMBER.. | DESCRIPTION.. | QTY REQ'D |
|--------------------------|---------------------------------|--------------|
| KITS: | | |
| | *Kits are all inclusive | |
| UD04-KIT-UD2 | VALVE KIT | |
| UD04-KIT-UD5 | PLUNGER BOLT KIT | |
| UD04-KIT-UD28 | SEAL KIT | |
| UD04-KIT-UD29 | BRASS KIT | |
| ADAPTERS & ACCESSORIES.. | | |
| ADAPTER-NST-1&1/2" | 1&1/2" NPT X NST OUTLET ADAPTER | 4 |
| ADAPTER-NST-2&1/2" | 2&1/2" NPT X NST OUTLET ADAPTER | 4 |
| FHWA | PRESSURE WAND ACCESSORY | 1 |
| LINECAGE-1 | SAFETY ANCHOR DEVICE | 1 |

MD 5.0/25-U



MD 5.0/25-U Quick Reference

| | | | |
|------------------------|--------------------------------|------------------------|--------------|
| Maximum Flow | 5.0 GPM | Valve Kit | 04-KIT UD-2 |
| Maximum Pressure | 2500 PSI | Seal Kit | 04-KIT UD-28 |
| Rated Pump Speed | 1750 RPM | Brass Kit | 04-KIT UD-29 |
| Oil Capacity | 20 oz. UDOR LUBE or SAE 30W | Plunger Bolt Kit | 04-KIT UD-5 |
| | | Plunger Part # | 04-1205.30 |
| | | Plunger Diameter | 18 MM |